

**GILDAN®**



## 4100L / GD009

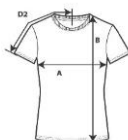
### Premium Cotton Ladies' T-Shirt

**DETAILS**

**Weight**  
**Content**  
**Yarn Count**  
**Features**

185.0 G/SqM (White 180.0 G/SqM)  
100% Combed Ring Spun Cotton  
24/1  
1.2 cm collar  
Taped neck and shoulders  
Sideseamed  
Double needle sleeve and bottom hems  
Semi fitted  
Mid weight soft fabric  
Tearaway label  
Bangladesh  
S-2XL  
S - 2XL 36 PIECES  
11  
55

**Country of Origin**  
**Sizes**  
**Case Packs**  
**Colours**  
**SKU's**



**SPECIFICATIONS**

| Centimeters                             | Tol-  | Tol+  | S      | M      | L      | XL     | 2XL    |
|---|-------|-------|--------|--------|--------|--------|--------|
| <b>Chest (A)</b>                        | 2.540 | 2.540 | 43.815 | 48.895 | 53.975 | 59.055 | 64.135 |
| <b>Length from HPS (B)</b>              | 2.540 | 2.540 | 64.770 | 66.040 | 68.580 | 71.120 | 72.390 |
| <b>Sleeve Length (Centre Back) (D2)</b> | 2.540 | 2.540 | 33.655 | 35.560 | 37.465 | 40.005 | 42.545 |

| Inches                                  | Tol-  | Tol+  | S      | M      | L      | XL     | 2XL    |
|---|-------|-------|--------|--------|--------|--------|--------|
| <b>Chest (A)</b>                        | 1.000 | 1.000 | 17.250 | 19.250 | 21.250 | 23.250 | 25.250 |
| <b>Length from HPS (B)</b>              | 1.000 | 1.000 | 25.500 | 26.000 | 27.000 | 28.000 | 28.500 |
| <b>Sleeve Length (Centre Back) (D2)</b> | 1.000 | 1.000 | 13.250 | 14.000 | 14.750 | 15.750 | 16.750 |

| COLOURS              | Code | Sizes | Comments                  |
|----------------------|------|-------|---------------------------|
| Azalea               | 071  | S-2XL |                           |
| Black                | 036  | S-2XL |                           |
| Cornsilk             | 475  | S-2XL |                           |
| Heliconia            | 010  | S-2XL |                           |
| Light Blue           | 069  | S-2XL |                           |
| Navy                 | 032  | S-2XL |                           |
| Red                  | 040  | S-2XL |                           |
| Ring Spun Sport Grey | 295  | S-2XL | 90% Cotton, 10% Polyester |
| Royal                | 051  | S-2XL |                           |
| Sapphire             | 026  | S-2XL |                           |
| White                | 030  | S-2XL |                           |

**CHANGES**

Total Net Change 0 SKU's