

PR346 Women's Stretch-Fit Cotton Poplin Short Sleeve Shirt

Description

Cotton combined with Elastane makes for a soft, stretchy and comfortable fitted style for ladies. A soft cut-away collar with top button which can be worn formally with a scarf or open collared for a more relaxed look.

Product Features:

- Soft feel and stretch fabric
- Bust and back darts
- Seamless placket
- Curved hem

Available In:

XS, S, M, L, XL, 2XL, 3XL

Certifications:

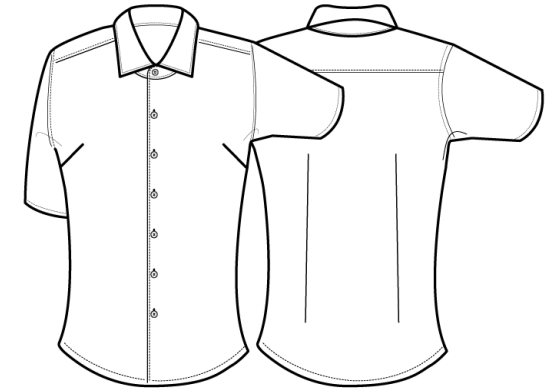


Colours:

Colour	Pantone	C	M	Y	K
Black	Black c	0	0	0	100
Pale Blue	2717C	34	15	0	0
Silver	Cool Gray 7C	20	14	12	40
White	White	0	0	0	0

Fabric:

97% Cotton, 3% Elastane Poplin, 115gsm.



Suggested Decoration:

Screen Print, Transfer Print, Embroidery

Country of Origin:

Bangladesh

Commodity Code:

6206 30 0000

Features:



Wash Care:



Carton Information:

Sizes	Carton	Pack	SKU's	Carton Weight	Carton Dimensions
All Sizes	24	6	28	7.5kg	56cmx38cmx16cm

Garment Sizes:

Size	8	10	12	14	16	18	20
Bust to fit"	33	35	37	39	41	43	45
Bust to fit cm	84	89	94	99	104	109	114
Bust actual cm	93	98	103	108	113	118	124
Coll size	XS	S	M	L	XL	2XL	3XL
Back length cm	65	66	67	68	69	70	71