

# KARIBAN

**REFERENCE :** K258

**SIZES :** S\_M\_L\_XL\_XXL\_3XL\_4XL

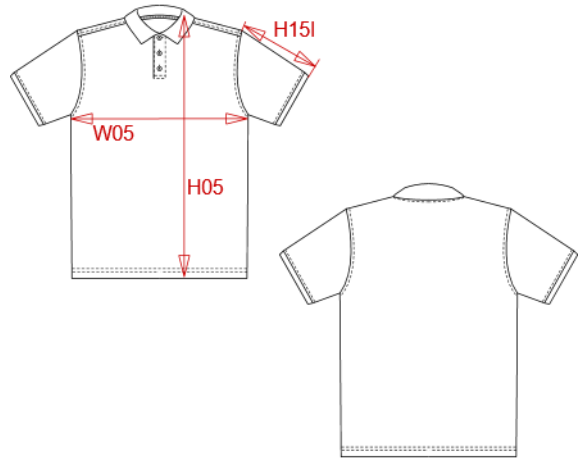
**COMPOSITION :**

Main fabric : Ring spun Combed Cotton pique preshrunk - 180 100%cotton

Main fabric : Ring spun Combed Cotton pique preshrunk - 180 For contrasted inner front tab 100%cotton

Main fabric : Ring spun Combed Cotton/Viscose pique preshrunk 90/10 - 180 For heather colors

For contrasted inner front tab 90%cotton / 10%viscose



**WEIGHT :**

Main fabric : 180 gsm

Main fabric : 180 gsm

Main fabric : 180 gsm

**TECHNICAL DETAIL :**

Preshrunk

**ARTICLE WEIGHT :**

222 gr/pc

DESCRIPTION	COLORS	PANTONE SERIGRAPHIE
<b>Français :</b> Polo piqué bicolore homme	Black / Oxford grey	Black / Based on Cool gray 7C
<b>English :</b> Men's two-tone piqué polo shirt	Navy / Oxford grey	433C / Based on Cool gray 7C
<b>Nederlands :</b> Piqué-herenpolo tweekleurig	White / Oxford grey	White / Based on Cool gray 7C
<b>Deutsch :</b> Zweifarbiges Piqué-Polohemd für Herren	Light royal blue / Oxford grey	653C / Based on Cool gray 7C
<b>Español :</b> Polo piqué bicolor de hombre	Red / Black	200C / Black
<b>Italiano :</b> Polo piqué bicolore uomo		
<b>Português :</b> Polo de homem piqué bicolor		

MEASUREMENT							
Description	S	M	L	XL	XXL	3XL	4XL
<b>H05 (M)</b> Hauteur totale / Total height	70	72	74	76	78	80	82
<b>W05 (M)</b> 1/2 largeur poitrine / 1/2 chest width	50	53	56	59	62	65	68
<b>H151 (M)</b> Longueur manche avec bord côte / Sleeve length with rib	22,75	23,50	24,25	25	25,75	26,50	27,25

CARE LABEL				

PACKING	
Box	50 pcs / box S => L:53cm W:36cm H:28cm GW:12.06kg NW:10.9kg M => L:53cm W:36cm H:28cm GW:12.06kg NW:10.9kg L => L:55cm W:38cm H:28cm GW:13.74kg NW:12.5kg XL => L:55cm W:36cm H:28cm GW:13.74kg NW:12.5kg XXL => L:59cm W:40cm H:28cm GW:15.6kg NW:13.71kg 3XL => L:59cm W:40cm H:28cm GW:15.6kg NW:13.71kg 4XL => L:60cm W:40cm H:28cm GW:15.6kg NW:14.56kg