

Milkybar Festive Friends 57g



EAN
8000300409000

Target market(s)
GB, IE

Components

Ingredients

Sugar
Cocoa Butter
Skimmed MILK Powder
Vegetable Fats (Palm, Rapeseed)
Butterfat (MILK)
Whey Powder (MILK)
Glucose Syrup
Rice Flour
Emulsifier (Lecithins)
Corn Bran
Natural Vanilla Flavouring

Calculated Nutrition

	per 100g	Per Portion (16,4 g)
Energy (kJ)	2286	375
Energy (kcal)	547	90
Fat (g)	31.4	5.1
of which saturates (g)	18.5	3
Carbohydrate (g)	60	9.8
of which sugars (g)	57.2	9.4
Fibre (g)	0.1	<0.1
Protein (g)	5.4	0.9
Salt (g)	0.19	0.03

Allergy Text

May contain NUTS.

Nutrition Header

Nutrition Header - Nutrition Information

Nutrition

	Per 100 g	Per Portion (16,4 g)	% RI*
Energy	2286 kJ	375 kJ	4%

	547 kcal	90 kcal	5%
Fat	31,4 g	5,1 g	7%
- of which: saturates	18,5 g	3,0 g	15%
Carbohydrate	60,0 g	9,8 g	4%
- of which: sugars	57,2 g	9,4 g	10%
Fibre	0,1 g	<0,1 g	-
Protein	5,4 g	0,9 g	2%
Salt	0,19 g	0,03 g	<1%

*Reference Intake of an average adult (8400kJ/2000kcal)

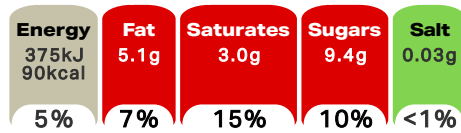
Contains approximately 3 servings

Portions should be adjusted for children of different ages

Front of Pack Nutrition

Per Portion

Per 2 pieces



% of an adult's Reference Intake
Energy per 100g: 2286 kJ / 547 kcal

Nutrition Other Text

Contains approximately 3 servings

Portions should be adjusted for children of different ages

Reference Intake Statement

Reference Intake Statement - Reference Intake of an average adult (8400kJ/2000kcal)

Product Description

Brand

Milkybar

Manufacturer Brand

Brand - Nestlé

Features

Creamy white filling with crispy pieces

Delicious white chocolate

90 Calories Per Serving

Individually wrapped

2 Pieces = 1 Serving

Standardised Brand

Brand - Milkybar

Regulated Product Name

White Chocolate with a Creamy Filling and Crispy Pieces (2.1%).

Marketing

Company Name

Nestlé UK Ltd / Nestlé Ireland Ltd

Company Address

UK: Nestlé UK Ltd,
PO Box 207,
York,
YO91 1WS.

IE: Nestlé Ireland Ltd,
3009 Lake Drive,
Citywest,
Dublin,
D24 H6RR.

Third Party Logos

- Crossed Grain Symbol
- Rainforest Alliance

Product Marketing

Simple Stuff
At Milkybar® we believe in the joy of simple stuff.
Loved for generations, Milkybar® never contains artificial flavours.

Other Information

Cross Grain Symbol - CH-042-097

Rainforest Alliance - People & Nature, Cocoa

Further Description

Find out more at ra.org

Discover more about our Nestlé Cocoa Plan® and our work with the Rainforest Alliance.

Health & Lifestyle

Allergy Advice

Milk - Contains
Nuts - May Contain

Storage & Usage

Storage Type

Type

Ambient

Preparation and Usage

Know your serving
2 Pieces = 1 Serving

Storage

Store cool and dry.

Date Marking Type

- Best Before

Lower Age Limit

Advisory - Years

4

Age Recommendation Text

Young children (less than 4 years) have limited chewing ability and could choke on small sweets.

Brandbank Captured Pack Data

Pack Size

57g e

Numeric Size

Numeric Size - 57

Pack Type

Type - Bag

Recycling Scheme

- OPRL

Recycling Other Text

Recycle at Store - Don't recycle at home
For IE: Recycle at Home / Visit MYWASTE.IE

Usage Count

Number of uses - Servings

3

Usage Other Text

Contains approximately 3 servings

Data Carrier

- NON_GS1_QR_CODE

Customer Services

Manufacturers Address

UK: Nestlé UK Ltd,
PO Box 207,
York,
YO91 1WS.

IE: Nestlé Ireland Ltd,
3009 Lake Drive,
Citywest,
Dublin,
D24 H6RR.

Return To

Let's talk
UK: www.nestle-confectionery.co.uk
0800 604 604,
Nestlé UK Ltd,
PO Box 207,
York,
YO91 1WS.

IE: 00800 6378 5385,
Nestlé Ireland Ltd,
3009 Lake Drive,
Citywest,
Dublin,
D24 H6RR.

Telephone Helpline

UK: 0800 604 604
IE: 00800 6378 5385

Web Address

www.nestle-confectionery.co.uk

Extended Data

Safety Warning

IMPORTANT: YOUNG CHILDREN (LESS THAN 4 YEARS) HAVE LIMITED CHEWING ABILITY AND COULD CHOKE ON SMALL SWEETS.

