

KitKat Christmas Break 55g (5 x 11g)



EAN

8000300411669

Target market(s)

GB, IE

Components

Ingredients

Sugar

Vegetable Fats (Palm, Rapeseed)

Skimmed **MILK** Powder

Cocoa Butter¹

Cocoa Mass¹

Rice Flour

Lactose (**MILK**)

Fat-Reduced Cocoa Powder¹

Whey Powder (**MILK**)

Butterfat (**MILK**)

Starch

Emulsifier (Lecithins)

Whey Protein Concentrate (**MILK**)

Raising Agent (Sodium Bicarbonate)

Salt

Corn Flour

Vanilla Flavouring

Natural Flavourings

Milk Chocolate contains Cocoa Solids 31% minimum and Milk Solids 14% minimum

¹Rainforest Alliance Certified

Calculated Nutrition

| | per 100g | Per Santa (11 g) |
|------------------------|----------|------------------|
| Energy (kJ) | 2235 | 246 |
| Energy (kcal) | 535 | 59 |
| Fat (g) | 31 | 3.4 |
| of which saturates (g) | 17.2 | 1.9 |
| Carbohydrate (g) | 55.9 | 6.1 |
| of which sugars (g) | 50.1 | 5.5 |
| Fibre (g) | 2.8 | 0.3 |

| | | |
|-------------|------|------|
| Protein (g) | 6.2 | 0.7 |
| Salt (g) | 0.24 | 0.03 |

Allergy Text

May contain **TREE NUTS**.

Nutrition Header

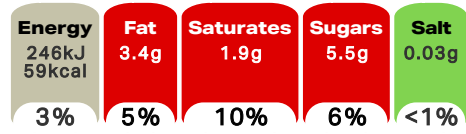
Nutrition Header - Nutrition Information

Nutrition

| | Per 100 g | Per Santa (11 g) | Reference Intake* | % RI* |
|--|-----------|------------------|-------------------|-------|
| Energy | 2235 kJ | 246 kJ | 8400kJ | 3% |
| | 535 kcal | 59 kcal | 2000kcal | |
| Fat | 31.0 g | 3.4 g | 70g | 5% |
| of which: saturates | 17.2 g | 1.9 g | 20g | 10% |
| Carbohydrate | 55.9 g | 6.1 g | 260g | 2% |
| of which: sugars | 50.1 g | 5.5 g | 90g | 6% |
| Fibre | 2.8 g | 0.3 g | - | - |
| Protein | 6.2 g | 0.7 g | 50g | 1% |
| Salt | 0.24 g | 0.03 g | 6g | <1% |
| Contains 5 servings | | | | |
| Portions should be adjusted for children of different ages | | | | |
| *Reference Intake of an average adult (8400KJ/2000kcal) | | | | |

Front of Pack Nutrition

Per Portion
Per Santa



% of an adult's Reference Intake*

Energy per 100g: 2235 kJ / 535 kcal

*Reference Intake of an average adult (8400kJ/2000kcal)

Nutrition Other Text

Contains 5 servings

Portions should be adjusted for children of different ages

Reference Intake Statement

Reference Intake Statement - Reference Intake of an average adult (8400kJ/2000kcal)

Product Description

Alternative Description

Supplier Preferred Product Name - KitKat Santa Milk Chocolate Bag 55g

Brand

KitKat

Manufacturer Brand

Brand - Nestlé

Features

55g KitKat® share bag of milk chocolate Santas with a crispy wafer and chocolate centre.
5 mini individually wrapped KitKat® chocolate Santa figures
Perfect for sharing with family or friends at Christmas
A great stocking filler gift!
Rainforest Alliance Certified Cocoa
No artificial flavours, colours or preservatives

Standardised Brand

Brand - KitKat

Regulated Product Name

Milk chocolate shell (53.8%) with a chocolately filling, including rice based crispy pieces (4.4%).

Marketing

Company Name

Nestlé UK Ltd / Nestlé Ireland Ltd

Company Address

UK: Nestlé UK Ltd,
PO Box 207,
York,
YO91 1WS.

IE: Nestlé Ireland Ltd,
3009 Lake Drive,
Citywest,
Dublin,
D24 H6RR.

Third Party Logos

- Crossed Grain Symbol
- Rainforest Alliance

Product Marketing

The 55g KitKat® Santa Chocolate Sharing Bag contains 5 mini milk chocolate Santa figures with a crispy wafer and milk chocolate filling.

Celebrate your Christmas with KitKat® Milk Chocolate Filled Santas!

In 2016, KitKat® celebrated becoming the first 100% globally certified sustainably sourced brand! The Nestlé Cocoa Plan works with Rainforest Alliance to ensure a better future for cocoa farmers and even better chocolate for you. Thanks to The Cocoa Plan, no matter where in the world you buy a KitKat®, you know that the cocoa used to make its delicious chocolate layer was responsibly sourced.

Brand Marketing

Love KitKat®?! Why not try our KitKat® Festive Friends Milk Chocolate Sharing Bag 220g? Even better for sharing with friends this Christmas!

Other Information

Crossed Grain Symbol - CH-042-052

Rainforest Alliance - People & Nature, Cocoa

®Reg. Trademark of Société des Produits Nestlé S.A.

Further Description

Nestlé Cocoa Plan is supporting farmers for better chocolate. Nestlé and the Rainforest Alliance work together to help improve the lives of cocoa farmers and the quality of their product. Find out more at ra.org.

www.KITKAT.co.uk
www.facebook.com/KITKATuk

Good to remember
Enjoying chocolate as part of a varied, balanced diet and a healthy lifestyle is one of life's little pleasures.

Enhanced Marketing Data

SEO Metatag

kitkat
christmas
santa
chocolate
sharing bag

Health & Lifestyle

Allergy Advice

Milk - Contains
Nuts - May Contain

Storage & Usage

Storage Type

Type

Ambient

Preparation and Usage

Know your serving
1 Santa = 1 Serving

Storage

Store cool and dry

Date Marking Type

- Best Before

Lower Age Limit

Advisory - Years

4

Age Recommendation Text

Young children (less than 4 years) have limited chewing ability and could choke on small sweets.

Brandbank Captured Pack Data

Pack Size

11g e

Numeric Size

Numeric Size - 11

Pack Type

Type - Bag

Recycling Scheme

- OPRL

Recycling Other Text

Recycle at Store - Don't recycle at home

Usage Count

Number of uses - Servings

5

Usage Other Text

Contains 5 servings

Units

Number of Units

Number of Units - 5

Customer Services

Manufacturers Address

UK: Nestlé UK Ltd,
PO Box 207,
York,
YO91 1WS.

IE: Nestlé Ireland Ltd,
3009 Lake Drive,
Citywest,
Dublin,
D24 H6RR.

Return To

Let's Talk
www.nestle.co.uk
UK: 0800 604 604,
Nestlé UK Ltd,
PO Box 207,
York,
YO91 1WS.

IE: 00800 6378 5385,
Nestlé Ireland Ltd,
3009 Lake Drive,
Citywest,
Dublin,
D24 H6RR.

Telephone Helpline

UK: 0800 604 604
IE: 00800 6378 5385

Web Address

www.nestle.co.uk

Extended Data

Safety Warning

IMPORTANT: YOUNG CHILDREN (LESS THAN 4 YEARS) HAVE LIMITED CHEWING ABILITY AND COULD CHOKE ON SMALL SWEETS.



