

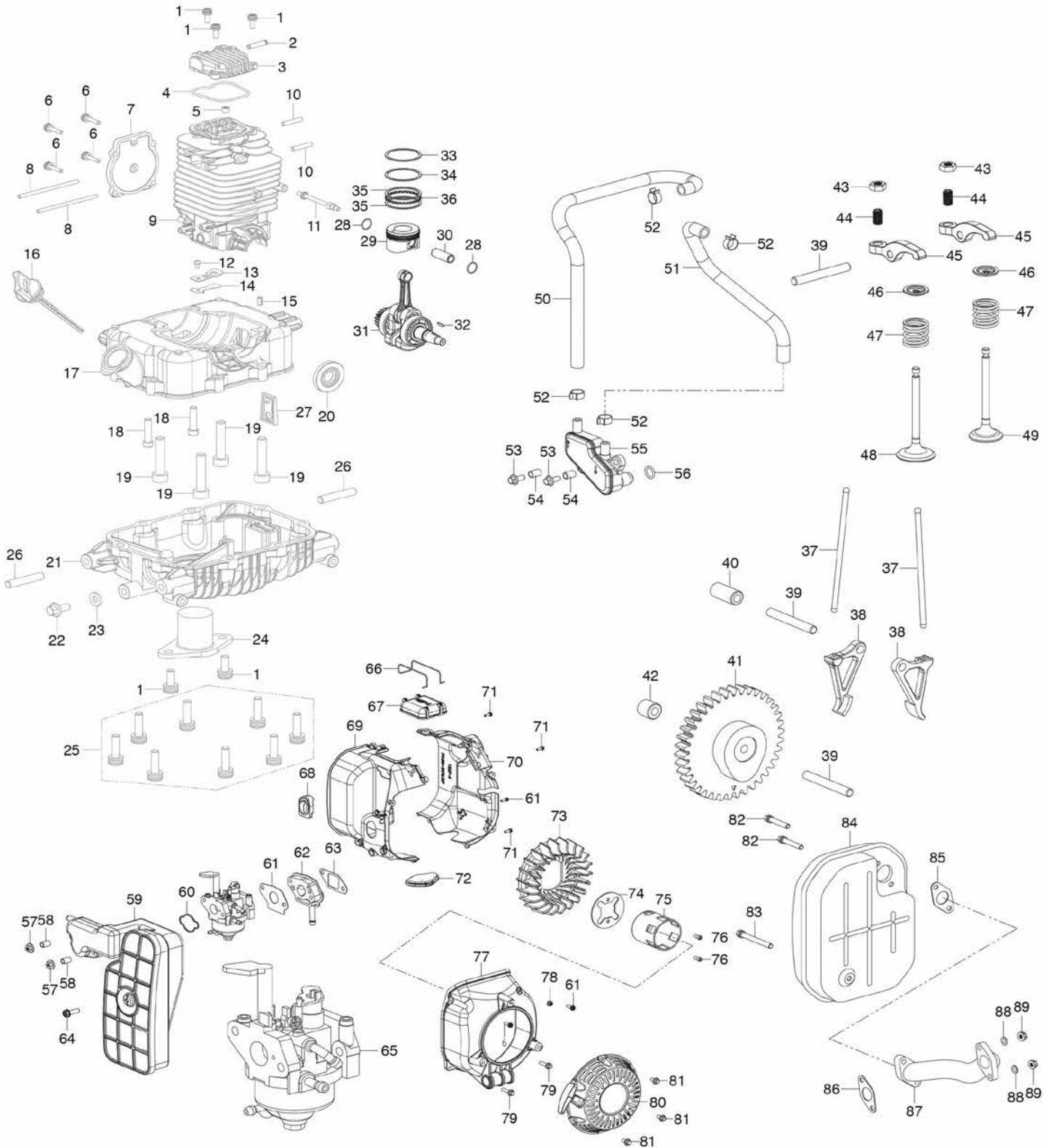
DRAPER®

1800W PETROL

INVERTER GENERATOR



80956 – DGI2000 SPARE PARTS DRAWING





1800W PETROL

INVERTER GENERATOR



80956 – DGI2000 SPARE PARTS LISTING

KEY No.	PART No.	STOCK No.	DESCRIPTION
1	Y-DGI2000-01	81151	Screw M6 x 18
2	Y-DGI2000-02	81152	Ventilation nozzle
3	Y-DGI2000-03	81153	Cylinder head cover
4	Y-DGI2000-04	81154	Cylinder head cover gasket
5	Y-DGI2000-05	81155	Valve oil seal
6	Y-DGI2000-06	81158	Screw M5 x 20
7	Y-DGI2000-07	81159	Cam chamber cover
8	Y-DGI2000-08	81160	Dual head bolt M5 x 100
9	Y-DGI2000-09	81162	Upper crankcase
10	Y-DGI2000-10	81165	Dual head bolts M6 x 32
11	Y-DGI2000-11	81166	Dual head bolts M5 x 76
12	Y-DGI2000-12	81167	Countersunk head screw M3 x 5
13	Y-DGI2000-13	81168	Limiting board
14	Y-DGI2000-14	81169	Valve plate
15	Y-DGI2000-15	81171	Dowel pin 4 x 8
16	Y-DGI2000-16	81173	Oil gauge
17	Y-DGI2000-17	81174	Lower crankcase
18	Y-DGI2000-18	81175	Inner hex screw M6 x 25
19	Y-DGI2000-19	81176	Inner hex screw M6 x 25
20	Y-DGI2000-20	81177	Oil seal 21 x 32 x 5
21	Y-DGI2000-21	81178	Oil pan
22	Y-DGI2000-22	81179	Hex flange bolt M6 x 12
23	Y-DGI2000-23	81180	Aluminium gasket 6x13x2
24	Y-DGI2000-24	81181	Oil level sensor
25	Y-DGI2000-25	81182	Screw M6x25
26	Y-DGI2000-26	81183	Dual head bolts M6x36
27	Y-DGI2000-27	81184	One way valve components
28	Y-DGI2000-28	81185	Piston pin clip
29	Y-DGI2000-29	81186	Piston
30	Y-DGI2000-30	81187	Piston pin
31	Y-DGI2000-31	81188	Connecting rod
32	Y-DGI2000-32	81190	Woodruff key
33	Y-DGI2000-33	81192	Oil ring clip
34	Y-DGI2000-34	81193	Oil ring
35	Y-DGI2000-35	81194	First ring
36	Y-DGI2000-36	81195	Second ring
37	Y-DGI2000-37	81196	Tappet
38	Y-DGI2000-38	81197	Lower rocker
39	Y-DGI2000-39	81198	Pin
40	Y-DGI2000-40	81201	Rocker bush
41	Y-DGI2000-41	81202	Camshaft
42	Y-DGI2000-42	81205	Camshaft bush
43	Y-DGI2000-43	81206	Lock nut
44	Y-DGI2000-44	81207	Tappet adjusting screw
45	Y-DGI2000-45	81208	Upper rocker

KEY No.	PART No.	STOCK No.	DESCRIPTION
46	Y-DGI2000-46	81209	Valve spring seat
47	Y-DGI2000-47	81210	Valve spring
48	Y-DGI2000-48	81216	Intake valve
49	Y-DGI2000-49	81219	Exhaust valve
50	Y-DGI2000-50	81220	Respiratory tube
51	Y-DGI2000-51	81224	Outlet tube
52	Y-DGI2000-52	81225	Pipe hoop 9
53	Y-DGI2000-53	81226	Hex flange bolt M5x16
54	Y-DGI2000-54	81227	Deaerator bush
55	Y-DGI2000-55	81228	Deaerator
56	Y-DGI2000-56	81229	O ring
57	Y-DGI2000-57	81236	Hex flange bolt m5
58	Y-DGI2000-58	81240	Air cleaner bush
59	Y-DGI2000-59	81244	Air cleaner assembly
60	Y-DGI2000-60	81247	Air cleaner gasket
61	Y-DGI2000-61	81248	Carburettor gasket
62	Y-DGI2000-62	81249	Insulation board components
63	Y-DGI2000-63	81251	Insulation gasket
64	Y-DGI2000-64	81252	Tap screw
65	Y-DGI2000-65	81253	Carburettor assembly
66	Y-DGI2000-66	81257	Wire clip
67	Y-DGI2000-67	81258	Cylinder head cover shroud
68	Y-DGI2000-68	81259	Oil filler hole airproof pad
69	Y-DGI2000-69	81261	Air guide sleeve A
70	Y-DGI2000-70	81264	Air guide sleeve B
71	Y-DGI2000-71	81265	Tap screw
72	Y-DGI2000-72	81266	Rubber cover
73	Y-DGI2000-73	81267	Cooling fan
74	Y-DGI2000-74	81268	Fan plate
75	Y-DGI2000-75	81269	Starting hub
76	Y-DGI2000-76	81270	Inner hex screw M6x10
77	Y-DGI2000-77	81271	Fan volute
78	Y-DGI2000-78	81272	Hex flange nut M5
79	Y-DGI2000-79	81273	Hex flange bolt M5x25
80	Y-DGI2000-80	81274	Recoil starter parts
81	Y-DGI2000-81	81275	Hex flange bolts M6x12
82	Y-DGI2000-82	81298	Bolt M6 x 50
83	Y-DGI2000-83	81301	Bolt M6 x 75
84	Y-DGI2000-84	81302	Muffler assembly
85	Y-DGI2000-85	81303	Muffler gasket
86	Y-DGI2000-86	81304	Muffler pipe gasket
87	Y-DGI2000-87	81305	Muffler pipe
88	Y-DGI2000-88	81306	Washer 6
89	Y-DGI2000-89	81307	Hex flange nut M5

Helpline: +44 (0) 23 8049 4344 Sales Desk: +44 (0) 23 8049 4333 General Enquiries: +44 (0) 23 8026 6355 internet: drapertools.com email: sales@drapertools.com

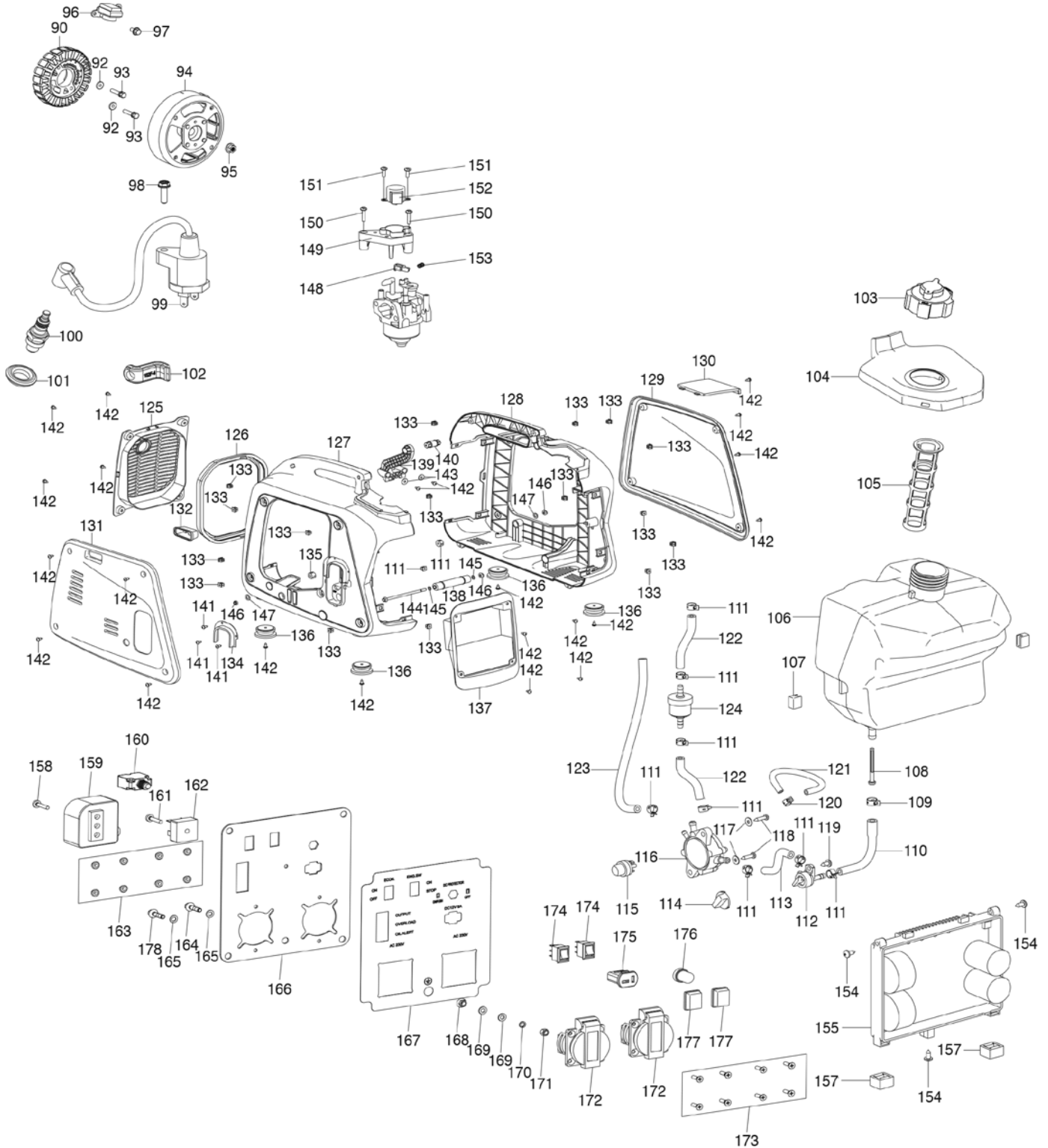
DRAPER®

1800W PETROL

INVERTER GENERATOR

GB

80956 – DGI2000 SPARE PARTS DRAWING





1800W PETROL

INVERTER GENERATOR



80956 – DGI2000 SPARE PARTS LISTING

KEY No.	PART No.	STOCK No.	DESCRIPTION
90	Y-DGI2000-90	81308	Stator 1.7kw 220v
92	Y-DGI2000-92	81309	Washer 5
93	Y-DGI2000-93	81310	Hex flange bolts M5 x 32
94	Y-DGI2000-94	81311	Rotor
95	Y-DGI2000-95	81312	Hex flange nut M12 x 1.25
96	Y-DGI2000-96	81317	Trigger
97	Y-DGI2000-97	81319	Hex flange bolts M5 x 10
98	Y-DGI2000-98	81320	Tap screw
99	Y-DGI2000-99	81321	Ignition coil
100	Y-DGI2000-100	81322	Spark plug a5rtc
101	Y-DGI2000-101	81323	Ignition coil cap seal
102	Y-DGI2000-102	81325	Bushing
103	Y-DGI2000-103	81326	Fuel tank cap assembly
104	Y-DGI2000-104	81327	Fuel tank port rubber
105	Y-DGI2000-105	81329	Fuel tank filter
106	Y-DGI2000-106	81330	Fuel tank
107	Y-DGI2000-107	81331	Fuel tank side pad
108	Y-DGI2000-108	81332	Fuel outlet filter
109	Y-DGI2000-109	81333	Clamp 11
110	Y-DGI2000-110	81334	Single head expansion fuel hose
111	Y-DGI2000-111	81335	Clamp 9
112	Y-DGI2000-112	81336	Fuel cock
113	Y-DGI2000-113	81337	Fuel hose
114	Y-DGI2000-114	81339	Fuel cock knob
115	Y-DGI2000-115	81340	Fuel lubricator
116	Y-DGI2000-116	81341	Fuel pump
117	Y-DGI2000-117	81342	Gasket
118	Y-DGI2000-118	81343	Tap screw
119	Y-DGI2000-119	81344	Tap screw
120	Y-DGI2000-120	81345	Clamp 8
121	Y-DGI2000-121	81346	Fuel hose
122	Y-DGI2000-122	81347	Fuel hose
123	Y-DGI2000-123	81348	Fuel hose
124	Y-DGI2000-124	81349	Fuel filter
125	Y-DGI2000-125	81350	Muffler cover
126	Y-DGI2000-126	81351	Muffler cover seal
127	Y-DGI2000-127	81352	Right cover of shell
128	Y-DGI2000-128	81353	Left cover of shell
129	Y-DGI2000-129	81354	Left side cover
130	Y-DGI2000-130	81355	Upper cover
131	Y-DGI2000-131	81356	Right side cover
132	Y-DGI2000-132	81360	Rubber of choke
133	Y-DGI2000-133	81361	Fastener
134	Y-DGI2000-134	81362	Edge protection
135	Y-DGI2000-135	81363	Rubber pad 6x16x10

KEY No.	PART No.	STOCK No.	DESCRIPTION
136	Y-DGI2000-136	81364	Vibration absorber
137	Y-DGI2000-137	81365	Panel box
138	Y-DGI2000-138	81366	Rubber shock absorber long
139	Y-DGI2000-139	81367	Engine holder
140	Y-DGI2000-140	81368	Rubber shock absorber short
141	Y-DGI2000-141	81369	Tap screw
142	Y-DGI2000-142	81370	Tap screw
143	Y-DGI2000-143	81371	Gasket
144	Y-DGI2000-144	81372	Hex flange bolt M6x120
145	Y-DGI2000-145	81373	Gasket
146	Y-DGI2000-146	81374	Flange lock nut
147	Y-DGI2000-147	81375	Rubber pad
148	Y-DGI2000-148	81376	Drive arm
149	Y-DGI2000-149	81377	Stepped motor holder
150	Y-DGI2000-150	80956	Screw M4 x 12
151	Y-DGI2000-151	81379	Screw M3 x 8
152	Y-DGI2000-152	81380	Stepped motor assembly
153	Y-DGI2000-153	81381	Drive arm spring
154	Y-DGI2000-154	81382	Screw
155	Y-DGI2000-155	81383	Inverter 1.0kw 230v 50 hz
157	Y-DGI2000-157	81384	Inverter gasket
158	Y-DGI2000-158	81385	Cross pan head screw M5x16
159	Y-DGI2000-159	81389	Ignition controller
160	Y-DGI2000-160	81390	Overload protector 6A
161	Y-DGI2000-161	81393	Cross pan head screw M5x16
162	Y-DGI2000-162	81394	Rectifier kbpc3502
163	Y-DGI2000-163	81395	Hex flange nut M4
164	Y-DGI2000-164	81396	Hex flange bolt M5x16
165	Y-DGI2000-165	81397	Lock gasket
166	Y-DGI2000-166	81399	Panel components
167	Y-DGI2000-167	81400	Panel sticker
168	Y-DGI2000-168	81401	Hex flange nut M5
169	Y-DGI2000-169	81402	Flat washer
170	Y-DGI2000-170	81403	Spring washer
171	Y-DGI2000-171	81404	Hex nut M5
172	Y-DGI2000-172	81405	European socket
173	Y-DGI2000-173	81406	Tap screw M4x12
174	Y-DGI2000-174	81407	Boat switch
175	Y-DGI2000-175	81408	DC charging socket
176	Y-DGI2000-176	81409	Waterproof cap of overload
177	Y-DGI2000-177	81410	Waterproof cap of boat switch
178	Y-DGI2000-178	81411	Screw M5x8

Helpline: +44 (0) 23 8049 4344 Sales Desk: +44 (0) 23 8049 4333 General Enquiries: +44 (0) 23 8026 6355 internet: drapertools.com email: sales@drapertools.com