

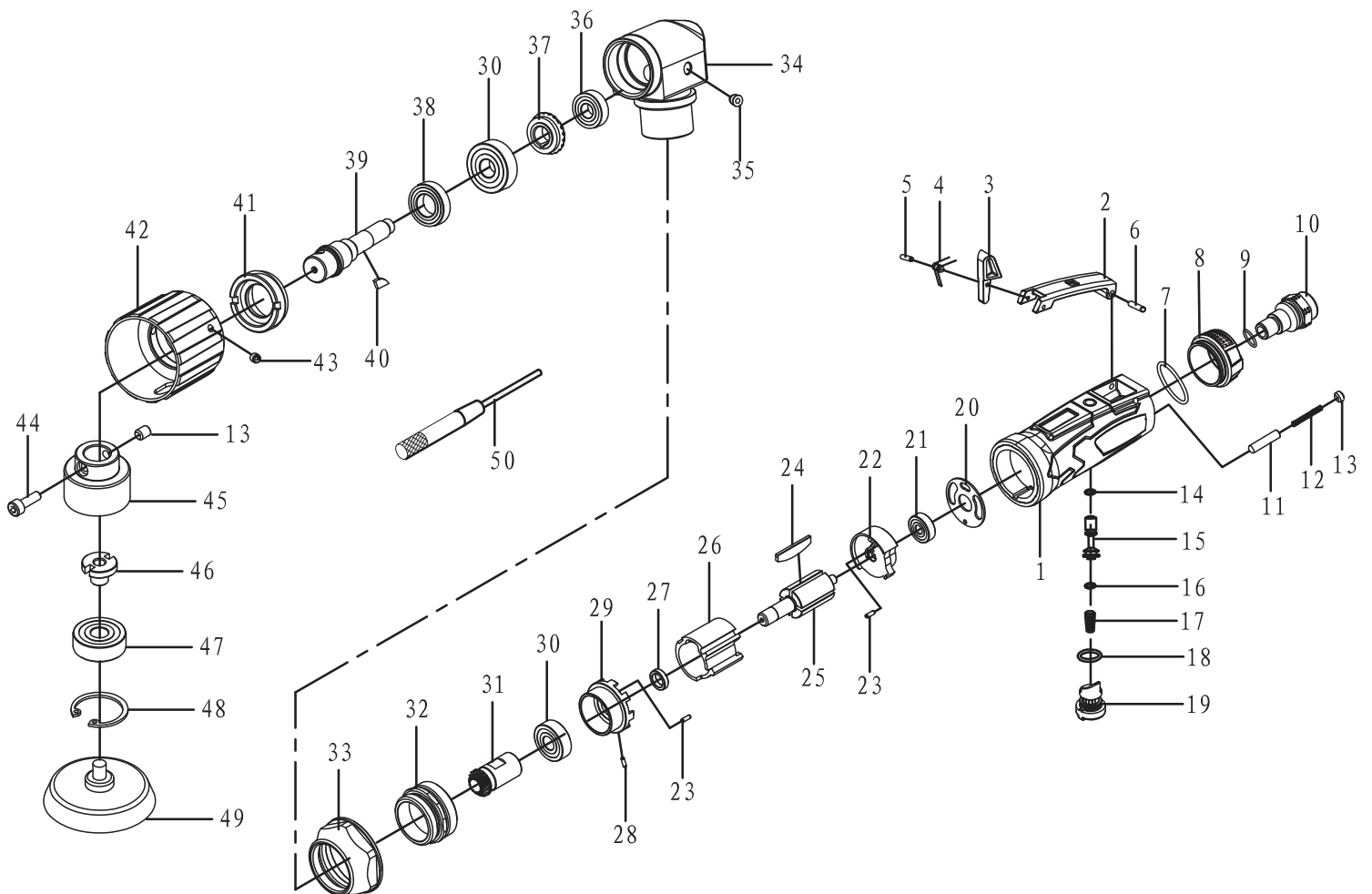
**DRAPER**<sup>®</sup>

# AIR MINI SANDER

65059 - SFAS50 SPARE PARTS DRAWING

GB

**STORM  
FORCE**





**DRAPER**®

**AIR  
MINI  
SANDER**

65059 - SFAS50 SPARE PARTS LISTING



KEY No.	PART No.	STOCK No.	DESCRIPTION
1	YSFAS50-01	66313	Housing
2	YSFAS50-02	66314	Trigger
3	YSFAS50-03	66316	Safety lever
4	YSFAS50-04	66318	Spring
5	YSFAS50-05	66319	Pin
6	YSFAS50-06	66320	Pin
7	YSFAS50-07	66321	O-ring
8	YSFAS50-08	66322	Muffle cover
9	YSFAS50-09	66324	O-ring
10	YSFAS50-10	66325	Air inlet connector
11	YSFAS50-11	66326	Pin
12	YSFAS50-12	66327	Screw
13	YSFAS50-13	66328	Screw
14	YSFAS50-14	66330	O-ring
15	YSFAS50-15	66331	Pin
16	YSFAS50-16	66332	O-ring
17	YSFAS50-17	66333	Spring
18	YSFAS50-18	66334	O-ring
19	YSFAS50-19	66335	Dial
20	YSFAS50-20	66339	Gasket
21	YSFAS50-21	66396	Bearing
22	YSFAS50-22	66417	Back cylinder head
23	YSFAS50-23	66422	Pin
24	YSFAS50-24	66432	Blade
25	YSFAS50-25	66433	Rotor
26	YSFAS50-26	66442	Cylinder
27	YSFAS50-27	66447	Washer
28	YSFAS50-28	66448	Pin
29	YSFAS50-29	66449	Front cylinder head
30	YSFAS50-30	66450	Bearing
31	YSFAS50-31	66451	Driving bevel gear
32	YSFAS50-32	66452	Locking ring
33	YSFAS50-33	66453	Nut
34	YSFAS50-34	66454	L connector
35	YSFAS50-35	66455	Oil inlet
36	YSFAS50-36	66456	Bearing
37	YSFAS50-37	66457	Transmission gear
38	YSFAS50-38	66458	Bearing
39	YSFAS50-39	66459	Drive shaft
40	YSFAS50-40	66460	Key
41	YSFAS50-41	66465	Retainer
42	YSFAS50-42	66467	Flywheel
43	YSFAS50-43	66468	Screw
44	YSFAS50-44	66469	Screw
45	YSFAS50-45	66479	Eccentric wheel

KEY No.	PART No.	STOCK No.	DESCRIPTION
46	YSFAS50-46	66482	Bearing seat
47	YSFAS50-47	66496	Bearing
48	YSFAS50-48	66498	Bearing hole
49	YSFAS50-49	66499	Backing pad
50	YSFAS50-50	74877	Pin bar