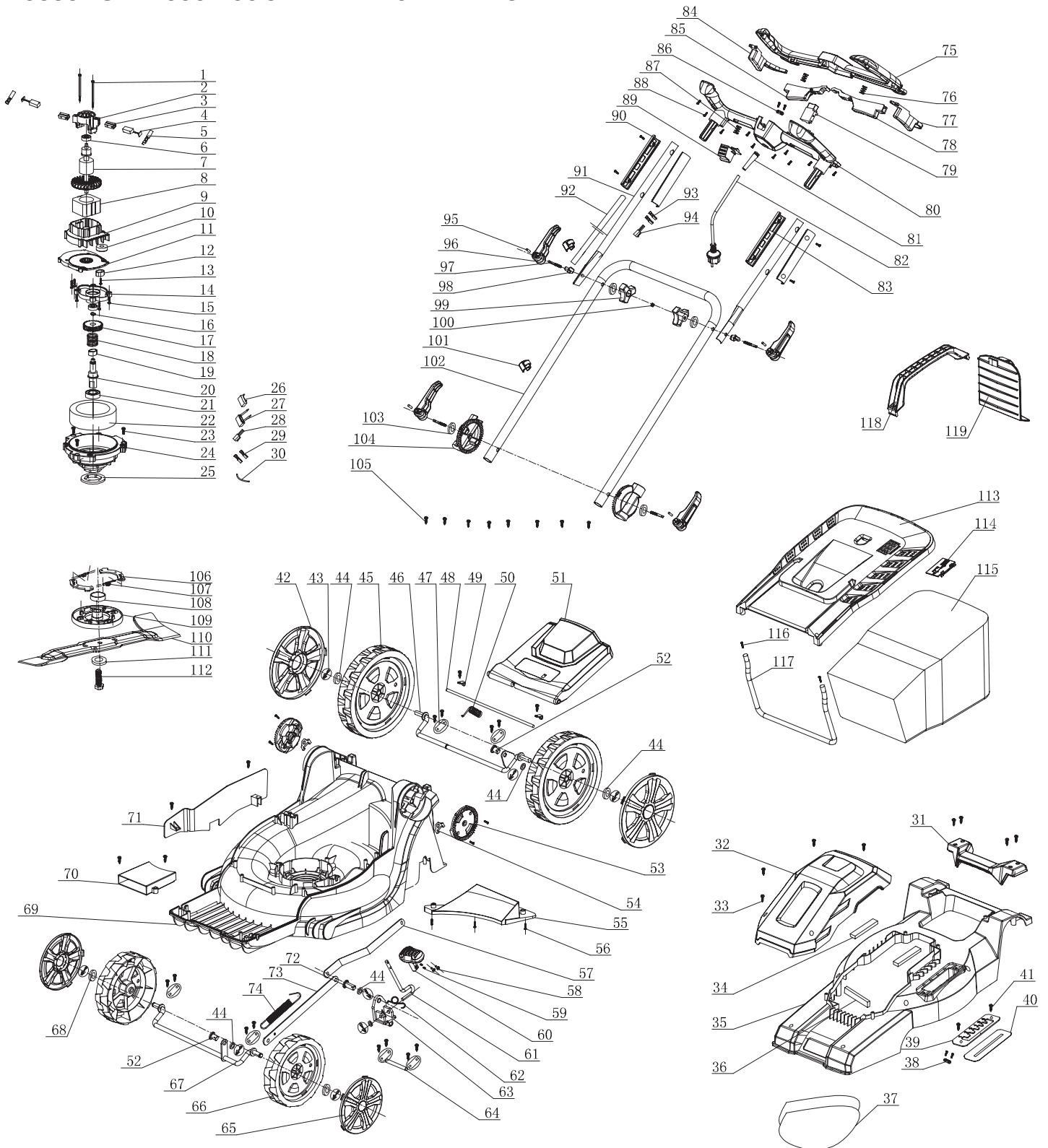


230V

LAWN MOWER

20535 - GLM1600/400 SPARE PARTS DRAWING



230V

LAWN MOWER

20535 - GLM1600/400 SPARE PARTS LISTING

Key No.	Part No.	Stock No.	Description	Key No.	Part No.	Stock No.	Description
1-29	YGLM1600/400-7A	70491	Motor Assembly	73			(NP) Bolt (M8*60)
2-4	YGLM1600/400-04	70489	Carbon brush assembly (Pair)	76			(NP) Upper frame
30			(NP) Handle	77			(NP) Tie rod fixed seat - 1
31			(NP) Upper cover	78			(NP) Reed switch knob
32			(NP) Screw (ST4*16)	79			(NP) Tie rod fixed seat - 2
33			(NP) Air inlet sponge	80			(NP) Switch board seat - 2
34			(NP) Upper housing	81			(NP) Switch board seat - 2
35			(NP) Air inlet sponge	82			(NP) Sponge
36			(NP) Pressing plate	83			(NP) Screw (ST4*16)
37			(NP) Scale panel	84			(NP) Switch lever
38			(NP) Gasket	85			(NP) Switch spring
39			(NP) Screw (ST4*12)	86			(NP) Switch unlock button
40-43	YGLM1600/400-45	70516	Rear Wheel Assembly	87			(NP) Switch box left cover
44			(NP) Rear axle shaft	88			(NP) Switch box right cover
45			(NP) Axle shaft pressing plate	89			(NP) Switch box fixing plate
46			(NP) Bolt	90			(NP) Cable sheath
47			(NP) Pressing plate	91			(NP) Unlock button spring
48			(NP) Spring	92			(NP) Cable clamp
49			(NP) Rear cover	93			(NP) Switch
50			(NP) Connecting rod button - 2	94			(NP) Cable
51			(NP) Adjustment block - inside	95			(NP) Female terminal
52			(NP) Screw (ST5*20)	96			(NP) Double hole male terminal sleeve
53			(NP) Hand rest nut	97			(NP) Power line
54			(NP) Baseboard	98-101	YGLM1600/400-96	70734	Upper wrench handle assembly
55			(NP) Screw (ST4*16)	102			(NP) Wire buckle
56			(NP) Back link	103			(NP) Lower frame
57			(NP) Screw (M5X8)	98-101, 104	YGLM1600/400104	70796	Lower wrench handle assembly
58			(NP) Height adjusting handle	105			(NP) Tapping screw (ST4*16)
59			(NP) Regulating stem	106-112	YGLM1600/400-110	70887	Blade assembly
60			(NP) Adjust knob spring	113-119	YGLM1600/400-117	70919	Grass box assembly
61			(NP) Adjust lever block				
62			(NP) Adjust rod shaft				
41, 63, 64, 66	YGLM1600/400-66	70611	Front Wheel Assembly				
65			(NP) Front axle shaft				
67			(NP) Chassis				
68			(NP) Ventilation set				
69			(NP) Flap				
70			(NP) Connecting rod button - 1				
71			(NP) Front connecting rod				
72			(NP) Tension spring				