

MST hub – Mini DisplayPort to 4x DisplayPort

StarTech ID: MSTMDP124DP



This MST hub lets you connect four monitors to your Mini DisplayPort™ (mDP) 1.2 equipped Windows® tablet, laptop or desktop.

The hub features a newly engineered chipset that was specifically designed and rigorously tested to resolve compatibility issues with the Microsoft Surface™ Pro 3.

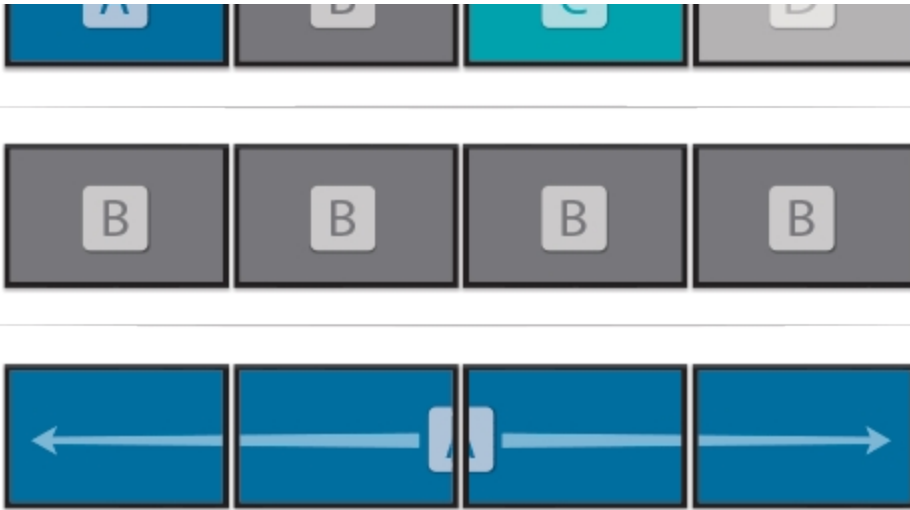


Please note: The surface Pro 3 only supports the use of three displays in total. If more than three external monitors are attached, the built-in touch screen on your Surface will be disabled. If four monitors are attached, the fourth monitor will not display any content.

Increase productivity with multiple screens

The newest generations of computers are more portable than ever, which often means that you're left with fewer video outputs and smaller integrated screens. This MST hub solves both of these problems by letting you connect four additional displays to your computer, which makes multitasking much easier.





Connect to any display

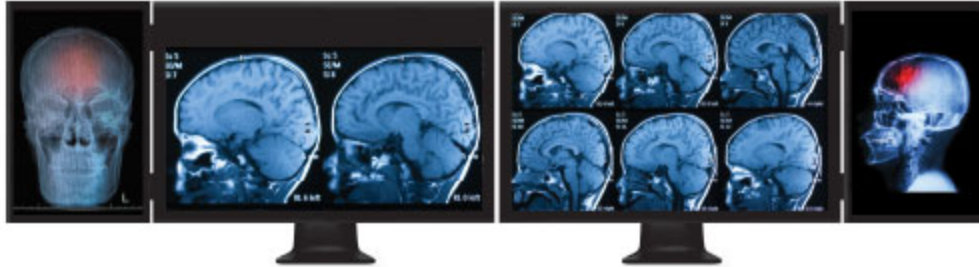
With the MST hub, you can use Mini DisplayPort video adapters and cable adapters that enable you to connect HDMI, VGA or DVI displays. This ensures that your MST hub will be compatible with virtually any television, monitor or projector. The hub is VESA and DisplayPort certified to support DP 1.2 enabled systems, for seamless integration with your existing video equipment.



Configure your displays for any environment

Using the MST hub, you can extend your desktop onto additional monitors and stream independent content to

each display, giving you the freedom to multitask and increase your productivity. You can also mirror the same image onto multiple displays for remote viewing applications such as digital signage.



Enjoy amazing video quality, without draining system resources

MST technology uses your existing video card to minimize the use of system resources while delivering Ultra HD 4K resolutions. This unprecedented performance makes MST perfect for high-resolution applications such as graphic design, gaming and medical imaging.

Note: When using a DisplayPort 1.1 video card the MSTMDP123DP will act as a splitter, automatically mirroring your video source across all displays. Resolution limitations apply.

The MSTMDP124DP supports plug-and-play installation for a hassle-free setup, and is backed by a StarTech.com 2-year warranty and free lifetime technical support.

Note: MST shares 10.2 Gbps across all attached displays. Higher resolutions can restrict the available bandwidth with the remaining ports, please see our guideline below for determining an ideal resolution for your setup. Certain graphics adapters have limited MST support and will only output to three displays in total. If more than three monitors are attached, the fourth will be disabled.

Average resolution bandwidth allocation

- 1920x1080 (High-definition 1080p) @60hz - 22%
- 1920x1200 @60hz - 30%
- 2560x1440 @60hz - 35%
- 2560x1600 @60hz - 38%
- 3840 x 2160 (Ultra HD 4K) @30hz - 38%

Note: Exceeding 100% will reduce functionality.

Examples of supported resolution configurations

Screen 1 Resolution	Screen 2 Resolution	Screen 3 Resolution	Screen 4 Resolution	Total % of Bandwidth
1920x1080 @60hz (22%)	1920x1080 @60hz (22%)	1920x1080 @60hz (22%)	1920x1080 @60hz (22%)	88%
1920x1200 @60hz (30%)	1920x1080 @60hz (22%)	1920x1080 @60hz (22%)	1920x1080 @60hz (22%)	96%

Screen 1 Resolution	Screen 2 Resolution	Screen 3 Resolution	Screen 4 Resolution	Total % of Bandwidth
3840x2160 @30hz (38%)	1920x1080 @60hz (22%)	1920x1080 @60hz (22%)	off	82%
3840x2160 @30hz (38%)	1920x1200 @30hz (30%)	1920x1080 @60hz (22%)	off	98%

Examples of unsupported resolution configurations

Screen 1 Resolution	Screen 2 Resolution	Screen 3 Resolution	Screen 4 Resolution	Total % of Bandwidth
2560x1600 @60hz (38%)	2560x1600 @60hz (38%)	1920x1200 @60hz (30%)	1920x1200 @60hz (30%)	136%
3840x2160 @30hz (38%)	2560x1600 @60hz (38%)	1920x1200 @60hz (30%)	1920x1200 @60hz (30%)	136%
3840x2160 @30hz (38%)	2560x1600 @60hz (38%)	2560x1440 @60hz (35%)	1920x1200 @60hz (30%)	141%
3840x2160 @30hz (38%)	3840x2160 @30hz (38%)	3840x2160 @30hz (38%)	off	114%

Applications

- Add additional displays to your Surface Pro 3
- Build a four-display video wall to present entertainment to your patrons with an impressive display at a restaurant or shopping center
- Use one screen for reference data such as websites, while composing in another screen
- Dock your mDP 1.2 device and add four high-resolution displays to your workstation
- Create a panoramic video wall for digital signage applications
- Edit images, video or audio clips across four additional displays in any orientation or resolution
- Span a spreadsheet or worksheet across multiple displays, to avoid side-scrolling

Features

- Maximize your productivity by connecting four independent displays to your computer using the MST hub
- Connect to almost any television, monitor or projector with support for low-cost adapters
- Newly engineered chipset for increased compatibility with Microsoft Surface Pro 3
- Increase external video performance with support for resolutions up to 4K
- VESA and DisplayPort certified
- Compatible with DP1.2 graphics cards such as AMD Eyefinity technology and AMD Radeon
- Plug-and-play installation

Technical Specifications

Warranty	2 Years
Audio	Yes
Chipset ID	STDP4320
Converter Type	MST Hub
Output Signal	DisplayPort
Ports	4
Maximum Digital Resolutions	3840 x 2160 (Ultra HD 4K) @30hz
Supported Resolutions	1024x768 1280x720 (High-definition 720p) 1920x1080 (High-definition 1080p) 1920x1200 2560x1440 2560x1600 3840 x 2160 (Ultra HD 4K) @30hz
Wide Screen Supported	Yes
Connector A	1 - Mini-DisplayPort (20 pin) Male Input
Connector B	4 - DisplayPort (20 pin) Female Output
Color	Black
Enclosure Type	Plastic
Product Height	0.6 in [15 mm]
Product Length	4.1 in [105 mm]
Product Weight	4.5 oz [127 g]
Product Width	2.6 in [65 mm]
Center Tip Polarity	Positive
Input Current	0.5 A
Input Voltage	110 ~ 240 AC
Output Current	3A
Output Voltage	5 DC
Plug Type	N
Power Source	AC Adapter Included
Operating Temperature	0°C to 45°C (32°F to 113°F)
Storage Temperature	-20°C to 70°C (-4°F to 158°F)
Shipping (Package) Weight	4.2 oz [118 g]
Included in Package	1 - 4-Port Multi Monitor Mini DisplayPort™ MST Hub

Included in Package	1 - Universal power adapter (NA/EU/UK/AUS)
Included in Package	1 - Quick install guide

Certifications, Reports and Compatibility

