

## Colad Metal Spray Samples

Spray sample, metal, 5 colors, 750 pieces. The metal Spray Samples can be used to test color accuracy of both waterborne coatings and conventional paints. They come with a black stripe (except for the black version) to indicate the degree of the color's opaqueness and a  $\varnothing$  15 mm hole to match the color. 750 pieces per package.

Benefits of the metal Spray Samples:

- Color accuracy check
- Suitable for waterborne and conventional paints
- Black stripe to indicate the degree of the color's opaqueness (except for the black version)
- $\varnothing$  15 mm hole to match the color
- Can be placed on a magnetic holder
- Available in 5 colors: white, light grey, medium grey, dark grey and black



**Article number:** 9315xxx

**Description:** Metal Spray Samples



## Packaging information

750 pieces per box

## Technical information

- Thickness: 0.15 mm
- Dimensions: 15 x 10.5 cm
- Weight: 12kg per box
- RAL codes: Light grey: 7001, medium grey: 7047, dark grey: 7015, black: 9005

Art no.	Variant	EAN
9315	White	8714247006788
9315-01	Light Grey	8714247028001
9315-02	Medium Grey	8714247028018
9315-03	Dark Grey	8714247013267
9315-05	Black	8714247071052

## Frequently Asked Questions

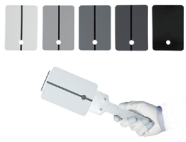
> **Are these spray samples suitable for all paint systems?**

Colad Metal Spray Samples are suitable for both waterborne paint systems and conventional paint systems.

> **How can I store my spray samples?**

Colad offers a Spray Sample Cabinet for storing that is suitable for storing up to 250 spray samples. This sturdy cabinet is perfect for keeping your spray samples tidy.

## Related products



**9319xxx**

Spray Samples with Holder



**9332**

Check Light 2.0



**9300**

Easy2Check

### Disclaimer

It is the responsibility of the user to read, understand and apply the information contained in this data sheet. Products are for professional use only. Necessary protective equipment and clothing should be worn. Repairs should always be done in accordance with OEM guidelines and regulations. All information is for the user's consideration, investigation and verification. The specific use, application and conditions of use are beyond the control of EMM International BV. It is the responsibility of the user to determine the suitability of the product for the user's specific application.