



Great for your security

Protect what is important to you. Preferably with the security solutions from EVVA. You benefit from decades of experience: these solutions offer outstanding quality and innovative technology.

EVVA offers highest security. For example, with EPS – the extended profile system. With three security levels, EPS is ideal for a wide range of requirements.

The benefits of EPS at a glance

- › One key for everything
- › Integrated check for tampering
- › Wear-resistant design
- › Diverse range of use

www.evva.com



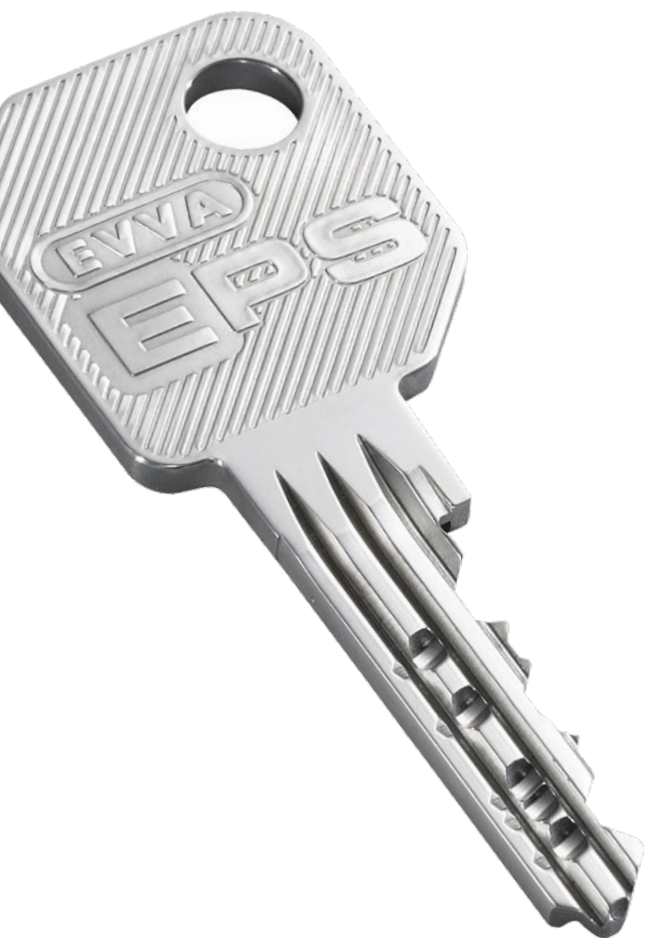


access to security



EPS

The trusted system for affordable security



EPS key | reliable technology in robust design

The established EPS technology is ideal for a wide range of use. The EPS key is a strong nickel silver key with large key cross-section. This makes it wear-resistant and long-lasting. The distinctive side codes and the associated manipulation control ensure a higher level of security.

**Added bonus: You can lock all doors with just one EPS key.
Whether it's the entrance, cellar, garage or annex.**



EVVA | unique security

EVVA is constantly investing in research and is always working to develop new key technologies. This means that EVVA consistently meets the increasing requirements for security and organisation.

Increased security with the EVVA security card and patents

The genuine EPS key is produced exclusively by EVVA. Copy keys, additional cylinders and lock charts are only available at an authorised EVVA partner and only with the EVVA security card. EVVA prevents keys from being produced without authorisation with patented features on the key.

More protection | in any situation

The reliable technology of the EPS cylinder offers long lasting protection against illegal opening methods. Hardened steel elements are standard for protection against drilling of the cylinder. The protection against picking makes the EPS cylinder harder to open with locksmith tools. Optional: EPS cylinder with enhanced drilling protection in the form of hard metal elements, as well as special carbide metal pins offering resistance against pulling the cylinder and plug in accordance with standards.



Choose the ergonomic design key bow

EPS keys are optionally available with the new, ergonomic high-quality design key bow. The attractive design is available in black, red and blue.

Benefits

- › Easier to distinguish the keys
- › Simple management of master key systems thanks to colour allocation
- › High quality for improved haptics