

# FR-GD830S-24

## Door Retaining Magnet

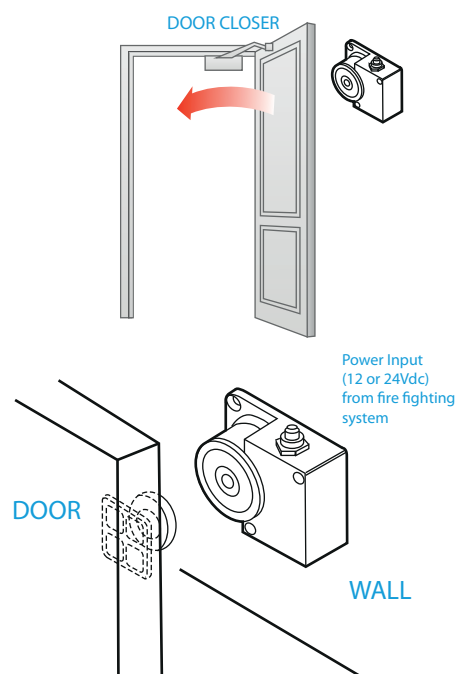
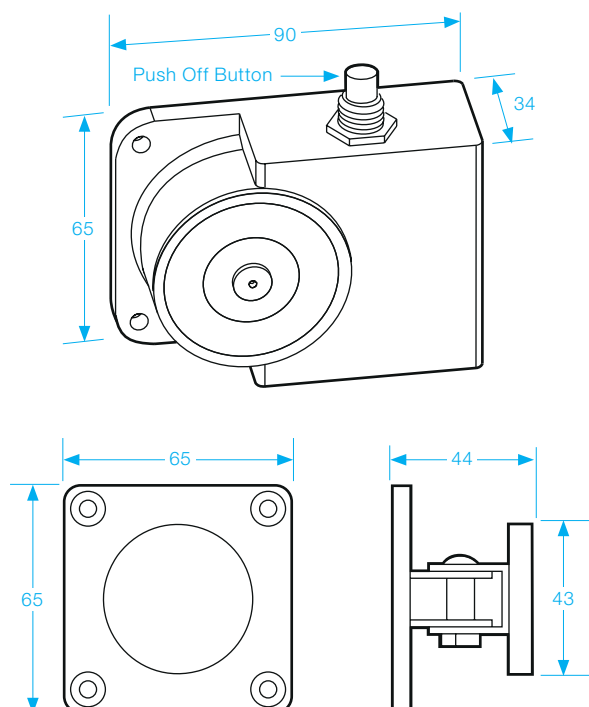
- Operating voltage 24Vdc
- Black powder-coat finish
- Up to 80lbs (36kg) holding force
- Fire tested - EN1155
- Over-ride switch
- Surface mount



BS EN1634:1



BS EN1155



### SPECIFICATION

- Voltage tolerance:  $\pm 15\%$ .
- Current draw: 130mA at 12Vdc, 60mA at 24Vdc at temperature 20°C.
- Operating temperature: -10~45°C (14 to 131°F).
- Humidity: 0~95% non-condensing.
- Weight: 380g (approx).