

## Remote Control Door/Window Alarm

### Installation and Operation Instructions

Please read the instructions carefully before using the equipment for the first time and keep it for future reference.

#### 1. Standard packing list

Instructions \* 1  
Door/Window Alarm \* 1  
Remote-controller\*2  
AAA battery\*4  
3M tape \*1

#### 2. Specifications

MHZ	433.92MHz
Environment humidity	< 90%
Working temperature	-10-60℃
Decibel	130db
Battery in Alarm device	2 pcs AAA battery
Battery in Remote-controller device	1pcs CR2032 battery
Remote control distance	≥15m
Alarm device Standby	1year

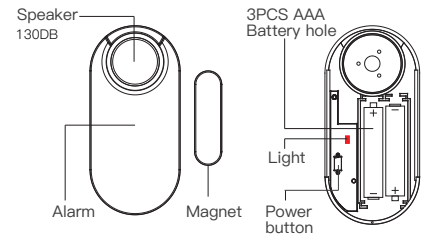
◀ 01/06 ▶

Remote-controller device Standby	1year
Remote-controller device weight	15g
Alarm device weight	60g
Alarm device size	90*43*13mm
Magnet size	45*13*13mm
Remote-controller device size	60*33*11mm

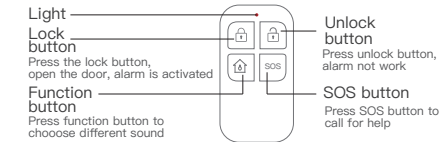
#### 3.Functions

A) Door/Window Burglar alarm B) Door bell C) SOS

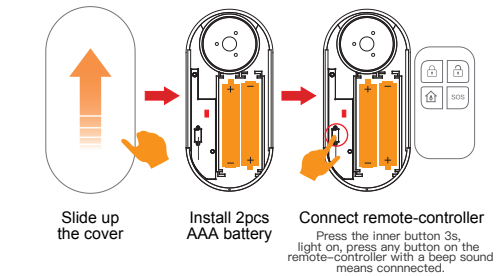
#### 4.Structure



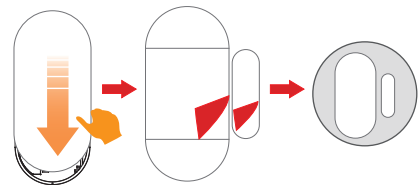
◀ 02/06 ▶



#### 5.Installation



◀ 03/06 ▶



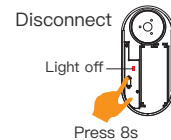
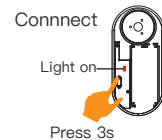
Slide down the cover

Put 3M tape on the back

Stick it on the door  
two parts distance within 15mm

#### Attention:

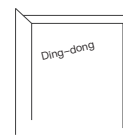
Press the inner button 3s, light on, press any any button on the remote-controller, there will emit a beep sound, means the alarm connect with the remote-controller successfully. Press the inner button 8s, from light on to light off, the alarm and the the remote-controller disconnect.



◀ 04/06 ▶

#### 6.How to use

- After installation, press the lock button, alarm is activated, when open the door or window, there will emit a loud sound 30s.
- In any situation, press the unlock button, the alarm will stop working.
- When door or window is closed, press unlock button first, then press the function button to choose different sound:  
press once: situation 1, Ding-dong sound  
press twice: situation 2, alarm sound  
press three times: situation 3, beep sound  
press four times, back to situation1.



situation 1



situation 2



situation 3

- In any situation, press the SOS button, there will emit a siren sound for 30s.

◀ 05/06 ▶



#### 7. Low power warning

When alarm battery voltage is lower than 2.1V, there will emit a beep sound, replace the battery as soon as possible.

#### 8. Warranty Card

Thank you for purchasing our product. Please fill in the details below and keep them safe.

User name		Contact add.	
Contact		Purchase add.	
Model No		Purchase date	

Certificate :



◀ 06/06 ▶