

## Keep track of all important keys, tools or equipment.

T1 : Single unit for keys, tools or equipment

1 plain white retaining peg



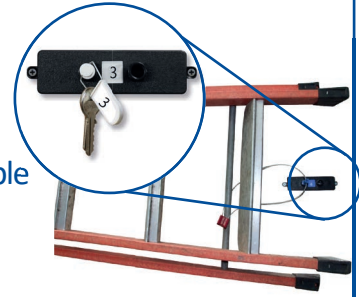
7 numbered port stickers plus 1 white writeable

7 matching numbered seal stickers plus 1 white writeable

5 different coloured access pegs

1 hexagonal flexible wire seal

1 flat wire anti-tamper key seal



Instructions for adding your keys, tools or equipment on to Keytracker:

1. Allocate a number to a seal & matching port sticker
2. Remove all key rings from the keys.
3. Push the numbered seal through the key heads (or equipment) and white retaining peg before closing firmly.

Instructions for accessing keys:

1. Allocate coloured access pegs to authorised individuals & record on chart
2. Insert your access peg in the hole next to the required keys or equipment and turn to the left to release.
3. The coloured peg is now held in place until the keys or equipment are returned.
4. Return the keys or equipment to their matching numbered position as soon as finished with, to regain your access peg.

### Also Available:



Mechanical 25  
Peg Board



Metal Reinforcing  
Bracket for use  
When Retaining  
Heavy Items



Metal Retaining  
Pegs



Mechanical 10  
Peg Board

(Fix next to Keytracker board)

# White Retention Peg Table

# Coloured Access Peg Chart

Position No.	Description
1	
2	
3	
4	
5	
6	
7	

Colour	Name
Yellow	
Orange	
Red	
Grey	
Light Blue	



**Aldridge**  
Masters of Security Distribution

