

# SUREFIRE

FOR PVCU, COMPOSITE AND TIMBER DOORS

## EFFORTLESS MULTI-POINT LOCKING.

Do you want the highest level of door security in a lock that's easy to use?

With ERA's new SUREFIRE multi-point lock, simply shutting the door engages a trigger and automatically fires all the locking points.

With SUREFIRE you can be certain that when the door is closed, the hooks and latches are always engaged. The lock mechanism also pulls the door tight into the frame for best-in-class weathersealing.

With just the turn of a key to deadlock, what could be simpler?



# TOTAL SUREFIRE DOOR

**SUREFIRE** is a complete door lock security solution for PVCu, timber or composite. Classic door handle or, for composite and timber Heritage style doors an Escutcheon. The range of lock variants, optional accessories and beautifully crafted hardware, give you peace of mind with effortless multi-point locking.



## High Security Hooks

Twin tapered anti-jimmy hooks with anti-saw protection and hardened anti-drill inserts for lasting security performance and positioning.



## Intelligent Gearbox Design

Clever latch design ensures all elements are aligned before locking points are thrown to prevent misalignment. For use with euro or Invincible cylinders.



## SureSeal for PVCu Doors

For PVCu doors, SureSeal ensures compression, bringing the door in and sealing tightly against the frame preventing any drafts for optimum acoustics.



## Smooth, Easy Operation

Manufactured from aerospace grade aluminium, the hooks allow for a lighter key torque operation and guarantees robustness when firing.



## Frame Side Security

Adjustable high quality keeps secure all locking points tightly to the frame. Clamping the door shut to prevent any forced entry.



# SECURITY

ite doors. With a choice of either a  
on for the higher gearbox position.  
ives you the highest door security

## Security Hooks



## Intelligent Gearbox



## Aerospace Hooks



# Fab&Fix

Complement your door with the ultimate in Decorative Hardware. Only Fab&Fix is available in perfectly matching Hardex finishes.

Five years in development, Hardex finishes are among the most resilient and attractive in the world today. It all starts with the expertise of our design engineers and tool makers - only the most refined castings make the grade for a Hardex coat.

Time is then of the essence, it takes over 24 hours to perfect a single handle. Meticulous preparation of the surface material is followed by a complex series of chemical baths, each submersion calculated to the second. Now the product is ready for Hardex to be applied before curing in extreme temperatures. It's a lot of effort, but we hope you'll agree it's worth it.

## Handles for the Classic lock



Balmoral



Architectural



Heritage

## Furniture for the Heritage lock



Cylinder Pull



Oval Escutcheon



Bar Handle

## Perfectly Matching Letterplates



Nu Mail



Architectural



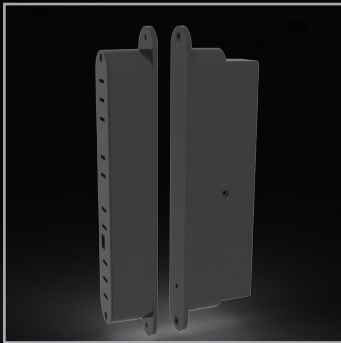
Heritage

# OPTIONAL ACCESSORIES



## Motorised

A motor can be added to any SureFire lock to drive the movement of the hooks and latches. Connected to the mains using either a continuous loop or with Power Jacks which transfer power wirelessly between the door and frame, the lock can then be connected to a compatible access control device such as a Keypad.



## Keypad

The addition of a simple access control device used in combination with the motor adds additional functionality to your lock.

Total Security  
for your home