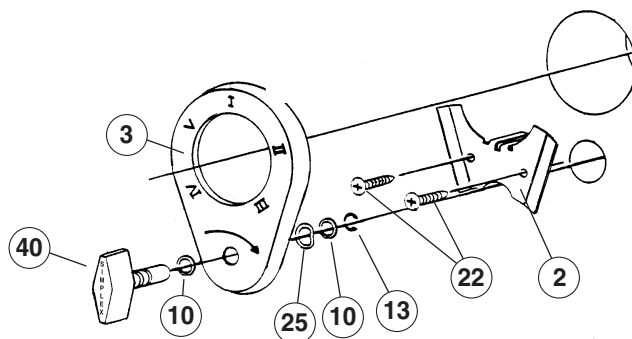
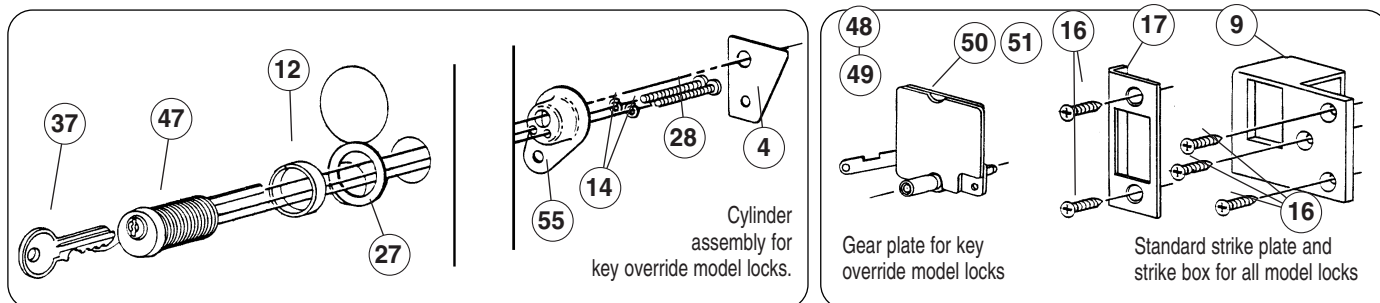




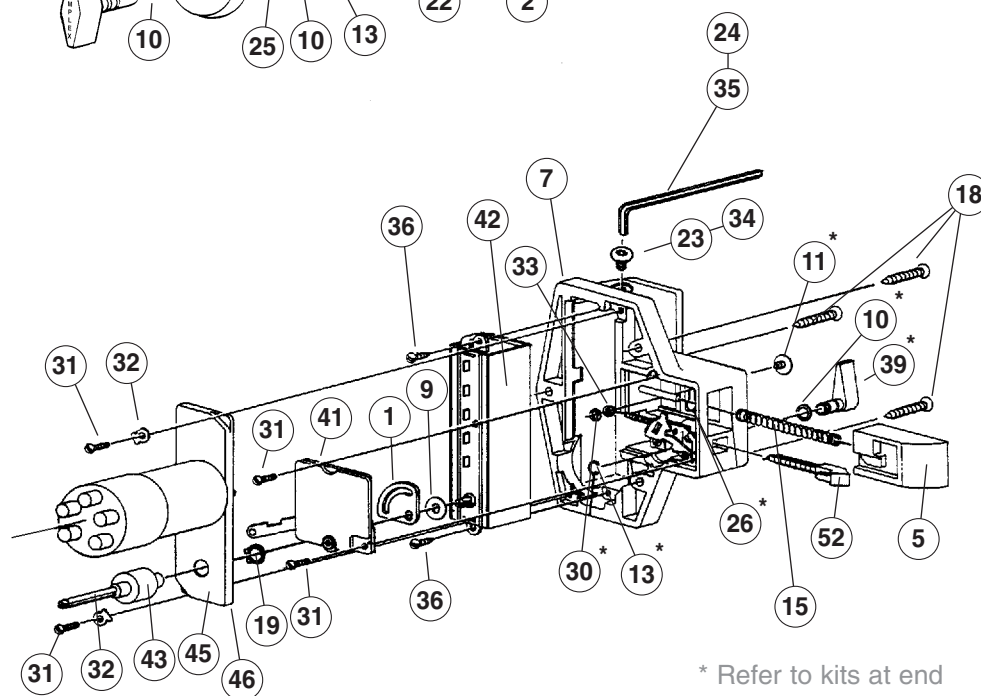
Simplex 900 Series



Continued
to
NL & DL
models
below

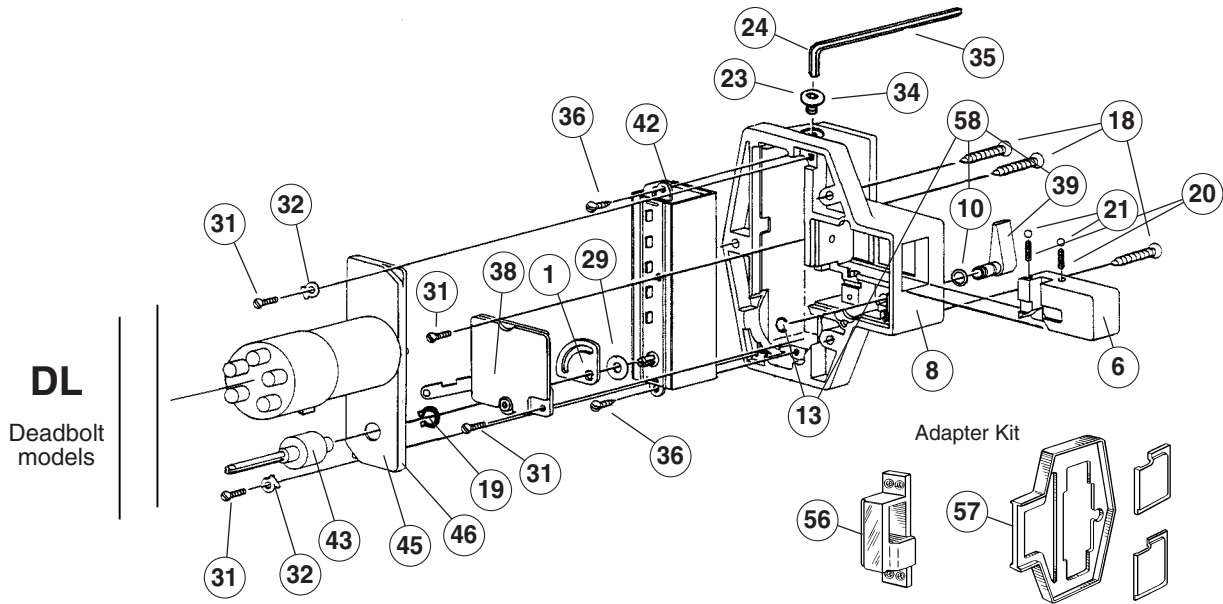
*See inside front cover for
How to Order instructions*

NL
Spring
latch
models



* Refer to kits at end
of ordering chart

900 Series (continued)



Item	Qty/Lock	Description	Finish	Part Number	List Prices (USD)
1	1	Sector Cam (For Combination Chamber Control Shaft)		24046-000-01	\$6.00
2	1	Holding Bracket (For attaching face plate to outside of door)		24063-000-01	\$7.00
4	1	Clip Flange Cover	Satin Chrome	24108-26D-01	\$6.00
			Satin Brass	24108-04-01	\$6.00
5	1	Latch Bolt (For Models 9170000, 9190000, 9350000, 9380000, 9290000, NL)	Satin Chrome	34011-26D-01	\$8.00
			Satin Brass	34011-04-01	\$8.00
6	1	Deadbolt (For Models 9020000, 9040000, 9060000, 9100000, DL)	Satin Chrome	34012-26D-01	\$8.00
			Satin Brass	34012-04-01	\$8.00
7	1	Lock Housing (For Models 9170000, 9190000, 9350000 & 9380000, NL)	Satin Chrome	34021-26D-01	\$24.00
			Satin Brass	34021-04-01	\$24.00
8	1	Lock Housing (For Models 9020000, 9040000, 9060000 & 9100000, DL)	Satin Chrome	34022-26D-01	\$24.00
			Satin Brass	34022-04-01	\$24.00
9	1	Mortise Strike Box	Satin Chrome	34023-26D-01	\$8.00
			Satin Brass	34023-04-01	\$8.00
10	2	Nylon Washer, Spacer (For Face Plate and Inside Knob) (10 pack)		34037-000-10	\$7.00
12	1	Space Collar (For Models 9060000 & 9350000)	Satin Chrome	44112-26D-01	\$6.00
			Satin Brass	44112-04-01	\$6.00
13	2	Knob Retainer Ring (For Face Plate and Inside Knob) (5 pack)		54011-000-05	\$6.00
14	1	Lock washer (For Key Override Assembly) (10 pack)		54029-000-10	\$6.00
15	1	Latch Return Spring (For Models 9170000, 9190000, 9350000, 9380000, 9290000, NL) (10 pack)		54050-000-10	\$10.00
16	2	Strike Mounting Screw (#10 x 1") (10 pack)	Satin Chrome	54052-26D-10	\$8.00
			Satin Brass	54052-04-10	\$8.00
17	1	Flat Strike	Satin Chrome	54053-26D-01	\$6.00
			Satin Brass	54053-04-01	\$6.00
18	3	Housing Mounting Screw (#10 x 1 1/2") (10 pack)	Satin Chrome	54061-26D-10	\$8.00
			Satin Brass	54061-04-10	\$8.00
19	1	Clutch Retainer Ring (10 pack)		54070-000-10	\$9.00
20	2	Spring (For Deadbolt Ball Bearings) (10 pack)		54074-000-10	\$6.00
21	2	Ball Bearings (For Deadbolt) (10 pack)		54075-000-10	\$6.00
22	2	Holding Bracket Screw (#7 x 1/2" Sheet Metal) (10 pack)		54077-000-10	\$6.00
23	1	Allen Head Button Screw (#10 x 32) Kit (Includes 1 ea #23, #24)	Satin Chrome	54082-26D-01	\$8.00
			Satin Brass	54082-04-01	\$8.00
24	1	Allen Wrench (1/8") Kit (Includes 1 ea #23, #24)	Satin Chrome	54082-26D-01	\$8.00
			Satin Brass	54082-04-01	\$8.00
25	1	Shake proof Spring Washer (For Face Plate Assembly) (10 pack)		54084-000-10	\$8.00
26	1	Latch Button Spring (For Latch Holdback Assembly) (Includes 1 ea #11, #26, #30, #33)	Satin Chrome	74469-26D-01	\$8.00
			Bright Brass	74469-03-01	\$8.00
27	1	Flange Washer (For Key Override Cylinder)	Satin Chrome	54097-26D-01	\$6.00
			Satin Brass	54097-04-01	\$6.00

900 Series (continued)

Item	Qty/Lock	Description	Finish	Part Number	List Prices (USD)
28	2	Screw (For Securing Key Override Cylinder) (10 pack)		54099-000-10	\$6.00
29	2	Washer, Shim (For Combination Chamber) (10 pack)		54109-000-10	\$5.00
30	1	Retainer Clip, E-Ring (For Latch Holdback Assembly) (Includes 1 ea #11, #26, #30, #33)	Satin Chrome	74469-26D-01	\$8.00
			Bright Brass	74469-03-01	\$8.00
31	2	Screw Panhead (#4 - 40 x 5/16") (For Securing Gear Plate) (10 pack)		54117-000-10	\$5.00
32	2	Washer (For Mounting Center Plate) (10 pack)		54120-000-10	\$5.00
33	1	Washer (For Latch Holdback Assembly) (Includes 1 ea #11, #26, #30, #33)	Satin Chrome	74469-26D-01	\$8.00
			Satin Brass	74469-04-01	\$8.00
34	1	Tamper Proof Access Screw Kit (Includes 1 ea #34, #35) (For Combination Change)	Satin Chrome	54133-26D-01	\$10.00
			Satin Brass	54133-04-01	\$10.00
35	1	Tamper Proof Allen Wrench Kit (Includes 1 ea #34, #35) (For Removing Tamper Access Screw)	Satin Chrome	54133-26D-01	\$10.00
			Bright Brass	54133-03-01	\$10.00
36	2	Round Head Sheet Metal Screw (#5 x 5/16") (Combination Chamber) (10 pack)		54144-000-10	\$6.00
37	1	Key Blank (For Key Override Cylinder)		54266	\$3.00
38	1	Gear Plate Assembly* (For locks without key bypass for Models 9020000, 9040000, DL)		74042-2-000-01	\$13.00
41	1	Gear Plate Assembly (For locks without key bypass) (For Models 9170000, 9190000, NL)		74071-000-01	\$13.00
42	1	Combination Chamber (M-55) Dimensions: 7/8" x 15/16" x 3 7/8" (22 mm x 24 mm x 98 mm) (Includes 1 ea #1, #9, #42)		74080-000-01	\$53.00
43	1	Ball Bearing Clutch Assembly (For connecting outside turn knob) (Includes 1 ea #19, #43)		74103-000-01	\$9.00
44	1	Face Plate with Outside Knob (Includes 1 ea #3 #10, #13, #25, #40)	Satin Chrome	74118-26D-01	\$13.00
			Satin Brass	74118-04-01	\$13.00
45	1	Center Plate and Barrel Assembly with Metal Buttons (100 Series) (For 9020000, 9060000, 9170000, 9350000)	Satin Chrome	74124-26D-01	\$22.00
			Satin Brass	74124-04-01	\$22.00
46	1	Center Plate and Barrel Assembly with Metal Buttons (200 Series) (For 9040000, 9100000, 9190000, 9380000, 9290000)	Satin Chrome	74125-26D-01	\$22.00
			Satin Brass	74125-04-01	\$22.00
47	1	Key Override Cylinder (For 1 3/4" - 2 1/8" Thick Door)	Satin Chrome	74161-26D-01	\$47.00
			Satin Brass	74161-04-01	\$47.00
48	1	Gear Plate Assembly* for Key Bypass Locks (For 9350000) (NLM 100)		74162-1-000-01	\$18.00
49	1	Gear Plate Assembly* for Key Bypass Locks (For 9380000) (NLM 200)		74163-1-000-01	\$18.00
50	1	Gear Plate Assembly* for Key Bypass Locks (For 9060000) (DLM 100)		74164-1-000-01	\$18.00
51	1	Gear Plate Assembly* for Key Bypass Locks (For 9100000) (DLM 200)		74167-1-000-01	\$18.00
52	1	Trigger Assembly (For NL + NLM Models)	Satin Chrome	74290-26D-01	\$8.00
			Satin Brass	74290-04-01	\$8.00
53	1	Drill Jig "C" Clamp (For wood doors) (Not Shown on Exploded View)		74300-000-01	\$140.00
54	1	Metal Template (Not Shown on Exploded View)		74301-000-01	\$89.00
55	1	Clip and Flange Assembly	Satin Chrome	74414-26D-01	\$6.00
			Satin Brass	74414-04-01	\$6.00
56	1	Surface-mounted Cast Strike (For metal door frames; spacers included) (Not Shown on Exploded View)	Satin Chrome	74464-26D-01	\$7.00
			Satin Brass	74464-04-01	\$7.00
57	1	Riser Plate to Shim Lock Housings 1/4" (6 mm) or 3/8" (10 mm) (Not Shown on Exploded View)	Satin Chrome	74468-26D-01	\$9.00
			Satin Brass	74468-04-01	\$9.00

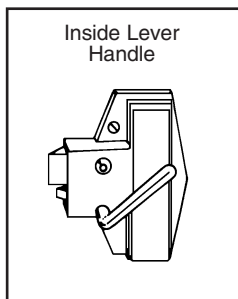
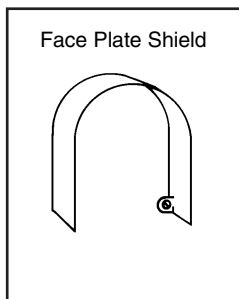
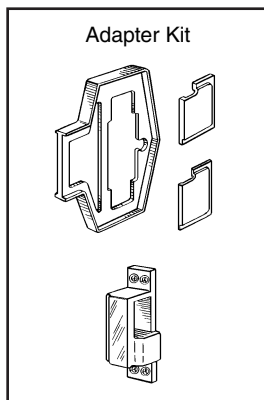
Additional Kits not shown in drawing

Item	Qty/Lock	Description	Finish	Part Number	List Prices (USD)
58	1	Latch Holdback Assembly Slide Button Activated for NL + NLM Models (Includes 1 ea #11, #26, #30, #33)	Satin Chrome	74469-26D-01	\$8.00
			Satin Brass	74469-04-01	\$8.00
59	1	Outside Knob Assembly – Includes Hardware (Includes 1 ea #10, #13, #25, #40)	Satin Chrome	74470-26D-01	\$8.00
			Satin Brass	74470-04-01	\$8.00
60	1	Inside Knob Assembly – Includes Hardware (Includes 1 ea #10, #13, #39)	Satin Chrome	74471-26D-01	\$9.00
			Satin Brass	74471-04-01	\$9.00

Note: Lubriplate Aero grease is the "only" lubricant that should be used.

900 Series (continued)

OPTIONS AND ACCESSORIES



Description	Old Product #	Product #	List Prices (USD)
Adapter Kit for Doors With Metal Frames. (Includes riser plates and surface strike)	(74464/74468) (74464/74468)	800-04-41 800-26D-41	\$14.00 \$14.00
Face Plate Shield (not for key override)	(24081-000-01)	805-26D-41	\$26.00
Master Keys - For Key Override Models	(54266-1)	54266-1-11	\$11.00
Cut Keys - Service Keys for Key Override Models	(54266-2)	54266-2-11	\$5.00
Blank Keys		54266	\$3.00
Inside Lever Handle		74437-04-01	\$32.00
		74437-26D-01	\$32.00
Panic Bar Release Kit		74438-04-01	\$32.00
		74438-26D-01	\$32.00