

Application:

Introducing the new FastLatch, a range of push fit latches and privacy bolts for residential applications.

Quick to install

- FastLatch is three times faster to fit than a standard latch.
- Minimal skill level required to install.
- Side ribs provide a secure fit, no visible fixings.
- Supplied with both round and square corner strikes, so the correct option can be tailored to either new frame preparation or provide a retrofit solution.

Style

- Attractive and modern design which suites with other door furniture, providing a stylish interior finish.
- Choice of three high quality finishes.
- Supplied with splinter guard to hide frame preparation resulting in a professional finish.

Reliable

- Rigorously tested to 800,000 closing cycles, to ensure excellent reliability, so you can rely on FastLatch for decades of use.
- Bolt through fixing holes to allow a more secure fixing of door furniture over time - reducing wear and tear on the door.
- 5 year guarantee - your assurance of UNION quality and reliability.



Standards:

- 800,000 close cycles tested with the reassurance of a 5 year guarantee.



Specification:

- Available in 2.5" (60mm) and 3" (73mm) sizes.
- Tubular latch for use with sprung door furniture with an 8mm square spindle.
- Privacy bolt for use with a emergency release or bathroom turn with an 5mm square spindle.
- Bolt through fixings centres 38mm.

Finish:

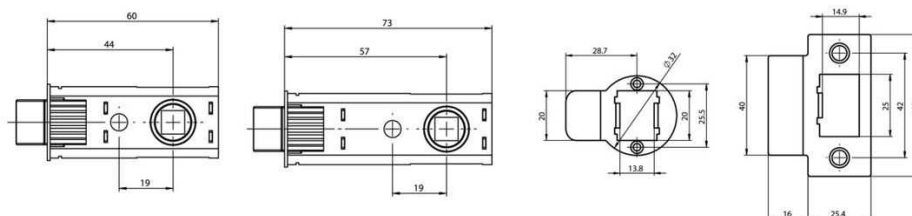
Available in three high quality finishes:

- Satin Nickel
- Polished Brass
- Polished Chrome

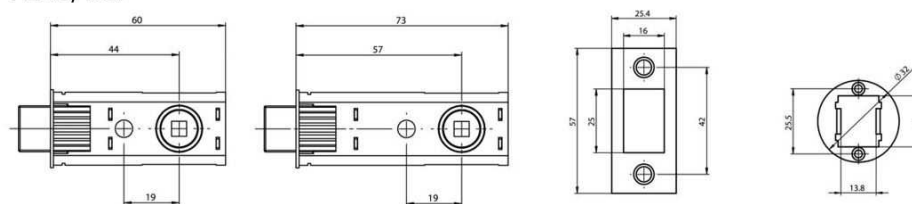
Latch finish matches faceplate and strike, for a consistent and aesthetically pleasing appearance.

Technical Design:

Tubular Latch



Privacy Bolt



Variants:

Code	Description
JFL26-CH-2.5	PUSH FIT TUBULAR LATCH POLISHED CHROME FINISH 2.5" CASE
JFL26-CH-3.0	PUSH FIT TUBULAR LATCH POLISHED CHROME FINISH 3.0" CASE
JFL26-PB-2.5	PUSH FIT TUBULAR LATCH POLISHED BRASS FINISH 2.5" CASE
JFL26-PB-3.0	PUSH FIT TUBULAR LATCH POLISHED BRASS FINISH 3.0" CASE
JFL26-SN-2.5	PUSH FIT TUBULAR LATCH SATIN NICKEL FINISH 2.5" CASE
JFL26-SN-3.0	PUSH FIT TUBULAR LATCH SATIN NICKEL FINISH 3.0" CASE
JFL27-CH-2.5	PUSH FIT TUBULAR BOLT POLISHED CHROME FINISH 2.5" CASE
JFL27-CH-3.0	PUSH FIT TUBULAR BOLT POLISHED CHROME FINISH 3.0" CASE
JFL27-PB-2.5	PUSH FIT TUBULAR BOLT POLISHED BRASS FINISH 2.5" CASE
JFL27-PB-3.0	PUSH FIT TUBULAR BOLT POLISHED BRASS FINISH 3.0" CASE
JFL27-SN-2.5	PUSH FIT TUBULAR BOLT SATIN NICKEL FINISH 2.5" CASE
JFL27-SN-3.0	PUSH FIT TUBULAR BOLT SATIN NICKEL FINISH 3.0" CASE