

Lockey Digital Garden Gate Closer GCTB175

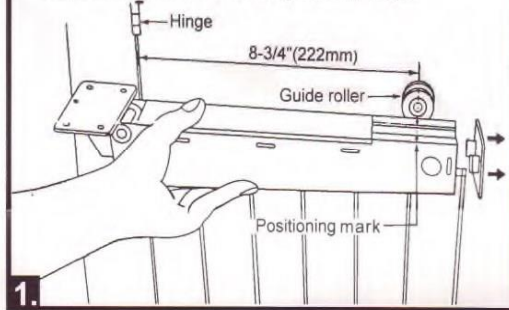
INSTALLATION INSTRUCTIONS FOR GATE CLOSER

Maximum Gate Weight-50kg

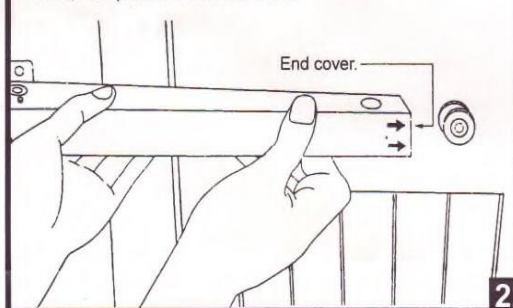
Maximum Gate Width-1000mm

- The closer can be fitted to the top, middle or bottom of the gate on the "pull" side only.
- The gate face must be flush with the gatepost face and hinged as close as possible to the post.
- The pivot point of the closer must be in line with the pivot point of the hinges. It may be necessary to fabricate a bracket to allow the closer to be fitted correctly.
- The gate must swing freely on the hinges prior to fixing the closer and the hinges regularly greased.
- The guide roller must be fitted and it may be necessary to fabricate a bracket to receive the roller.
- The gate must not be allowed to open more than 90° and a ground stop must be fitted if required.
- The holding pin (see fig. 4) must not be removed until the closer is fitted.

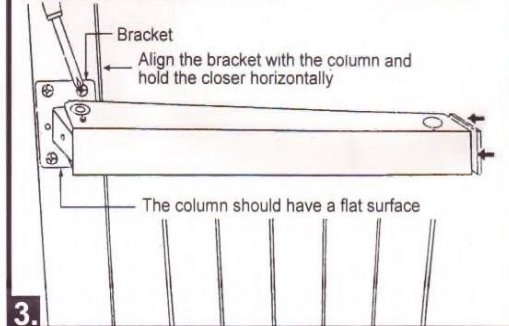
1. From the centre pivot line of the hinges, measure 222mm (8-3/4") - see positioning mark and secure guide roller to gate



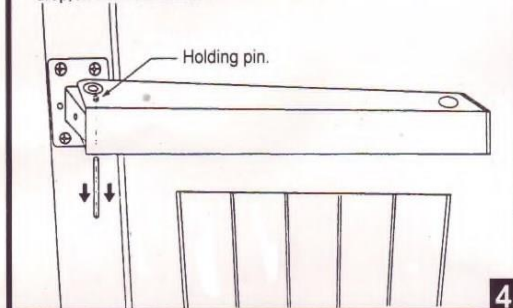
2. Pull off the end cover, slide the closer groove onto the guide roller, then push back the end cover.



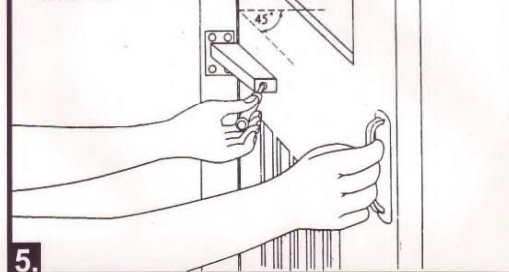
3. Secure the bracket on the column



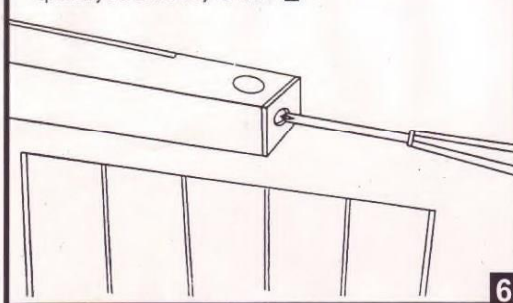
4. Open the door slightly to let the holding pin drop off from the closer.



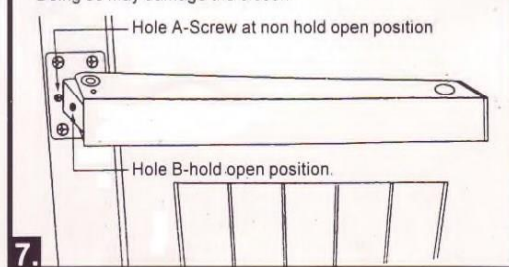
5. Holding the door at about 45° open, use a screwdriver and turn 1/4 circle anti-clockwise or clockwise at a time for faster or slower closing speed as desired.



6. Leaving the door at closed position, adjust your desired latching speed by the same way as above 5.



7. To have the door operate with a "Hold open" mode, simply remove the screw from the hole "A" and attach it to hole "B". Do not attempt to force the closer beyond the screw. Doing so may damage the closer.



sales@lockeydigital.co.uk 01763 245 245