



HD72 Euro Profile Mortise Lockcase

The high performance lock that goes beyond the standard

Trusted by **Professionals**



ASSA ABLOY

ASSA ABLOY, the global leader
in door opening solutions

UNION – Trusted by professionals

From our first lock made in 1840, UNION's expertise is second to none.
It's what we're known for.



UNION's new range of HD72 modular euro-profile heavy duty lockcases are designed to deliver high performance locking for years. HD72 lockcases cover typical installations including Sashlock, Deadlock, Mortice Latch, Deadlocking Nightlatch, Bathroom lock and an Emergency Escape lock.

HD72 locks are the most reliable and durable mortice lock available, featuring a new heavy duty latch technology built in. But this is more than just about strength and durability. HD72 also has a contemporary design with cast steel latches and deadbolts being supplied with a durable chrome plated finish as standard throughout the range. And, with a 15 year guarantee you can recommend HD72 with confidence.

Make the professional choice. Make it UNION.

UNION HD72 - the mortice lock solution you can trust

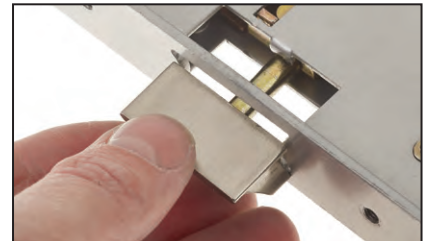
Unparalleled Performance

HD72 locks are designed and engineered to last longer, extending door hardware lifecycles and reducing maintenance and replacement costs. HD72 has exceeded 3.5 million cycles - 14 times greater than the industry standard, set by BS EN 12209 - so can offer you a 15 year guarantee. That's the longest guarantee in the market.



Designed For Heavy Handles

Widen your choice of door furniture with HD72 support for heavy handles. The heavy springing and 1° angle follower provide support for handles up to 930g, giving you the freedom to be more design led in projects.



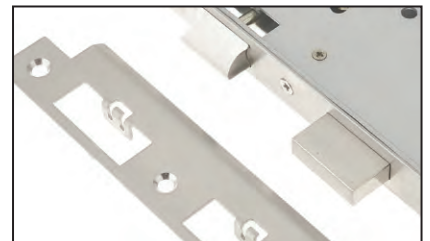
Security And Safety Made Simple

HD72 locks are designed to be easy to use anywhere by anyone. They feature a 20mm single throw deadbolt to give simple, fast egress and security in just one turn.



Stylish Design

HD72 gives the perfect look thanks to its high quality stainless steel finish available in square or radius forend, plus a splinter guard for a professional result.



A Finish To Match

HD72 is available with a range of finishes to suit your doors. From polished and satin stainless steel or chrome to brass in antique, brushed or high quality polished styles, you can add the perfect touch to a door.



*Environmental Product Declaration (EPD) available. Find out more on www.uniononline.co.uk

To see the HD72 in action or for further information please visit www.uniononline.co.uk/hd72 or contact us on **0845 223 2124**.

HD72: The durable, quality locking solution

One-size mortice footprint

HD72 makes door preparation simple. A modular range of lock cases - Sashlock, Deadlock, Latch, Deadlocking Nightlatch, Emergency Escape and Bathroom lock all designed with the same case size for quicker and easier door preparation. HD72 is also available with radius forend for installation using CNC machinery or square forend for on-site fitting.

Stylish latch design

A reversible latch designed with no gaps to give a smooth operation.

Works in the toughest situation

Sometimes you need a lock that will work in high frequency use areas - or where they might be abused. HD72 meets **Grade 3 Category of Use** so you can be confident it's more than tough enough to cope.

5mm spindle adaptor on bathroom lock

Flexibility for specification and can use a wider range of door furniture and styles.

A wide choice of finishes

The HD72 range is supplied with satin stainless steel as standard, or you can choose to have polished stainless steel, chrome or brass in antique, brushed or high quality polished styles.

A professional fit - faster

2 Way adjustable strike with splinter guard gives a perfect fit faster with adjustable strikes to ensure door engages to the frame correctly, while the splinter guard hides rough unfinished timber and protects the lock from frame debris.

Guaranteed to perform

Every HD72 lock comes complete with a **15-year guarantee** - so you can be confident it will perform for years to come.



Unparalleled Performance in exceeding BS EN 12209:2003

- Exceeds 3.5 Million cycles – 14 times greater than average
- Grade 3 category of use for use in areas subject to high degrees of wear or abuse
- Grade X durability: 200,000 test cycles with a 120N load on the latch bolt
- Very high corrosion resistance: 240 hours subjected to neutral salt spray (NSS) with a temperature requirement from -20C to +80C
- Fire testing: Suitable for use on timber and metal fire doorsets

Category of use	Durability & load on latchbolt	Door mass & closing force	Suitability for use on fire/ smoke door	Safety	Corrosion resistance & temperature
3	X	8	1	0	G



Quick reversible latch

Easy on-site handing - 3 simple steps to prepare the latch. Simple, no tools required and fast to reverse.



Durable latch technology

With HD72 you can be confident the lock will withstand the demands of years of heavy traffic. In tests the latch follower has been successfully cycle tested to **3.5 million operations**, giving you excellent lifecycle costings for any project.

Designed for heavy hardware

Widen the choice of door furniture design for doors. The heavy springing and **1°** follower angle supports handles up to **930g**, giving you the freedom to be more design led in projects.

Eliminate handle rattle

Unstable handles are a sign of poor specification and questionable quality. They feel worn and tired to the end user too. HD72 spindle grip helps remove handle rattle and improves user experience.

Bolt-through fixings

Eliminate door handles coming off in the user's hand. The pierced case allows for bolt-through furniture to be installed on a door with the confidence it will provide an excellent user experience for years to come.

Fast security and exit

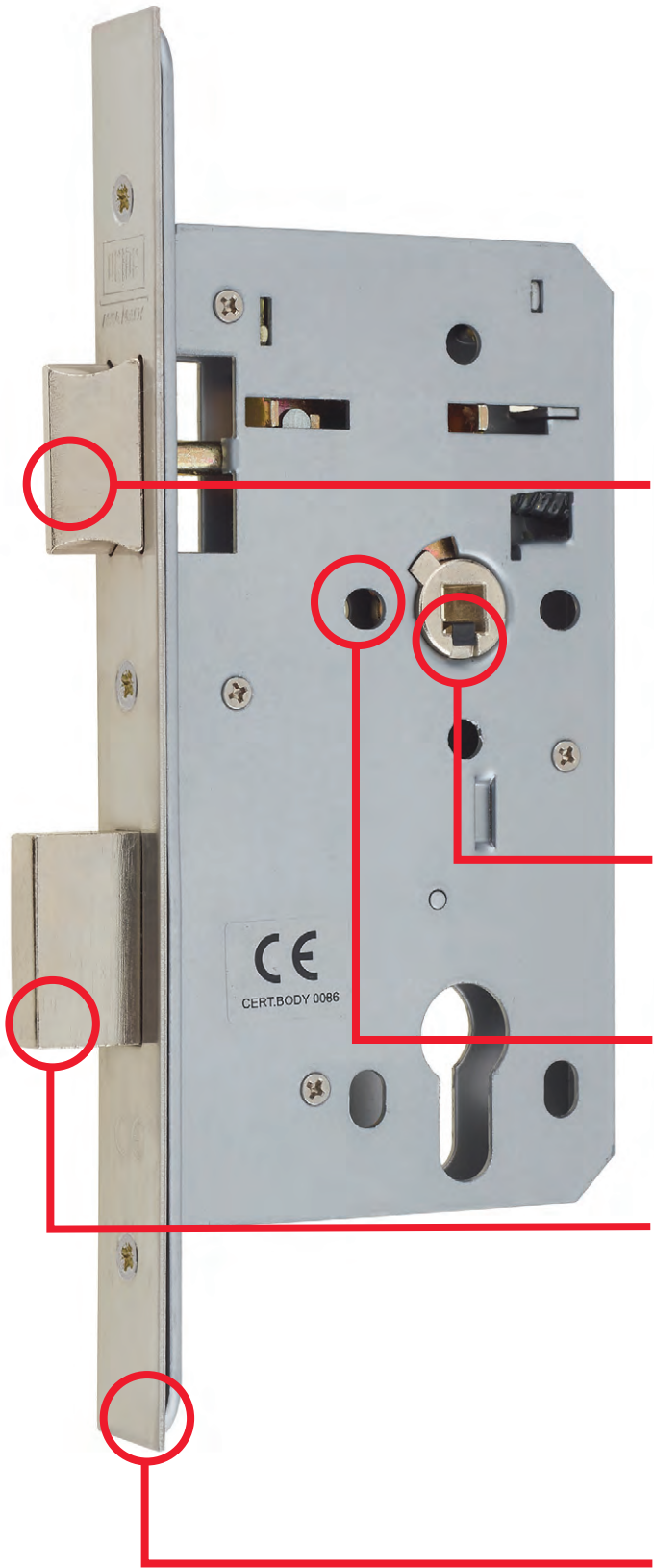
The HD72 lock range features a **20mm** single throw deadbolt to give simple, fast egress and security in just one turn, making them easy to use anywhere by anyone.

Cylinder-to-latch functionality

If you want the flexibility of specifying no handles on the outside of doors, HD72 is the perfect choice with either a thumbturn or cylinder key able to withdraw the latch and deadbolt.

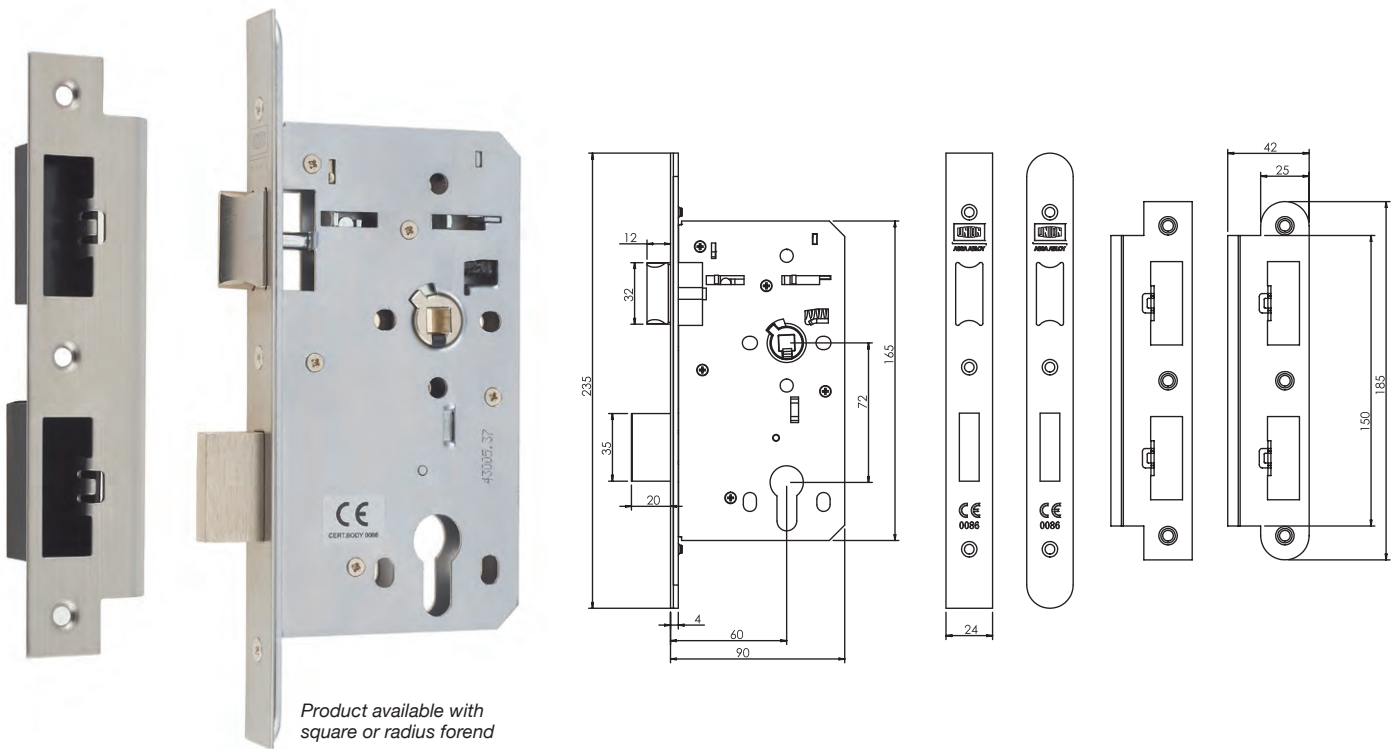
Two-piece forend

Keep the door furniture looking as-new with the HD72 two-piece forend. The removable front lets the door be painted without needing to mask off the lockface, while the plate also covers the lockcase retaining screws, creating an effective deterrent against tampering.



The HD72 Range

Euro Profile Cylinder Mortise Sashlock



Product available with square or radius forend

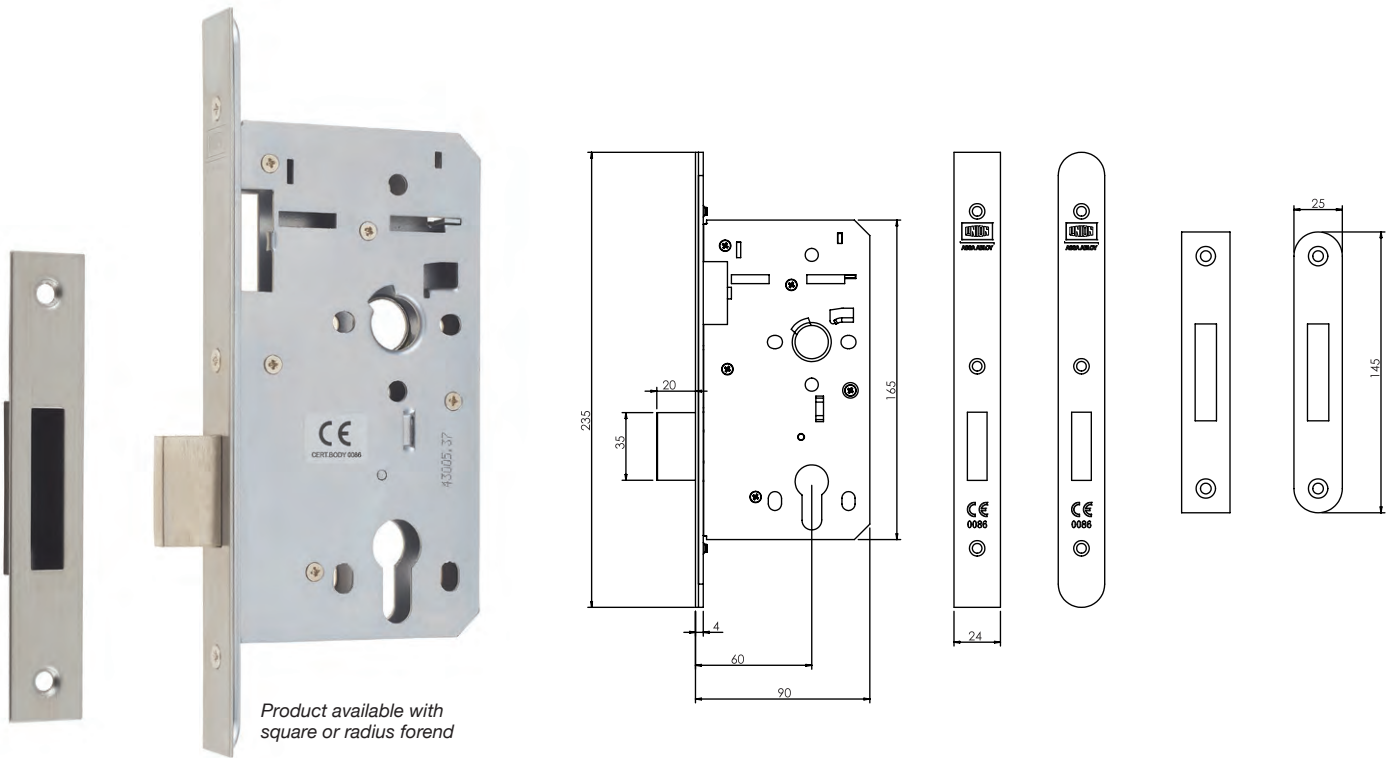


JHD72SL-S-SS60	HD72 Sashlock – Square forend – Stainless Steel – 60mm Backset	
JHD72SL-R-SS60	HD72 Sashlock – Radius forend – Stainless Steel – 60mm Backset	
Performance standards	BS EN 12209:2003	3 X 8 1 0 G 3 B A 2 0
Tested cycles	Latch tested through the follower to 3.5M cycles	
CE Marked	Cert No 0086-CPR-658458	
Fire Tested	EN1634 and Certifire approved CF5543 Timber 30 mins, 60 mins. Metal 240 mins. For 30 min fire doors use 1mm interdens, for 60 min fire doors use 2mm interdens	

Sashlock function from the inside	Latch bolt withdrawn by lever handle. Deadbolt locked and unlocked by operation of the cylinder key/ cylinder turn. On a second turn the cylinder will retract the latch head.
Sashlock function from the outside	Latch bolt withdrawn by lever handle. Deadbolt locked and unlocked by operation of the cylinder key / cylinder turn. On a second turn the cylinder will retract the latch head.
Angle of lever operation	35°
Furniture	For use with sprung or unsprung door furniture weighing up to 930g per pair.
Cylinders	Euro Profile Double cylinder or Cylinder and thumbturn.
Fixings	Lockcase pierced to accept both through door furniture with 38mm centres.
Handing	Reversible. Suits Left hand and Right hand.

Backset	60mm
Follower	8mm
Lockcase Depth	90mm
Height	165mm
Thickness	16mm
Centre Distance	72mm
Inner Forend	Radius
Outer Forend	Radius or Square
Forend Size	235mm (L) x 24mm (W)
Deadbolt Throw	20mm single throw
Latch & Deadbolt Material	Steel chrome plated
Case Material	Enclosed case. Heavy duty mild steel. Silver finish
Faceplates & Strikeplate Material	Grade 304 Satin Stainless Steel
Splinter box	Black plastic

Euro Profile Cylinder Mortice Deadlock



Product available with square or radius forend



JHD72DL-S-SS60	HD72 Deadlock – Square forend – Stainless Steel – 60mm Backset										
JHD72DL-R-SS60	HD72 Deadlock – Radius forend – Stainless Steel – 60mm Backset										
Performance standards	BS EN 12209:2003	3	X	8	1	0	G	B	A	0	0
Tested cycles	Deadbolt tested to 50,000 cycles										
CE Marked	Cert No 0086-CPR-658466										
Fire Tested	EN1634 and Certifire approved CF5543 Timber 30 mins, 60 mins. Metal 240 mins. For 30 min fire doors use 1mm interdens, for 60 min fire doors use 2mm interdens										

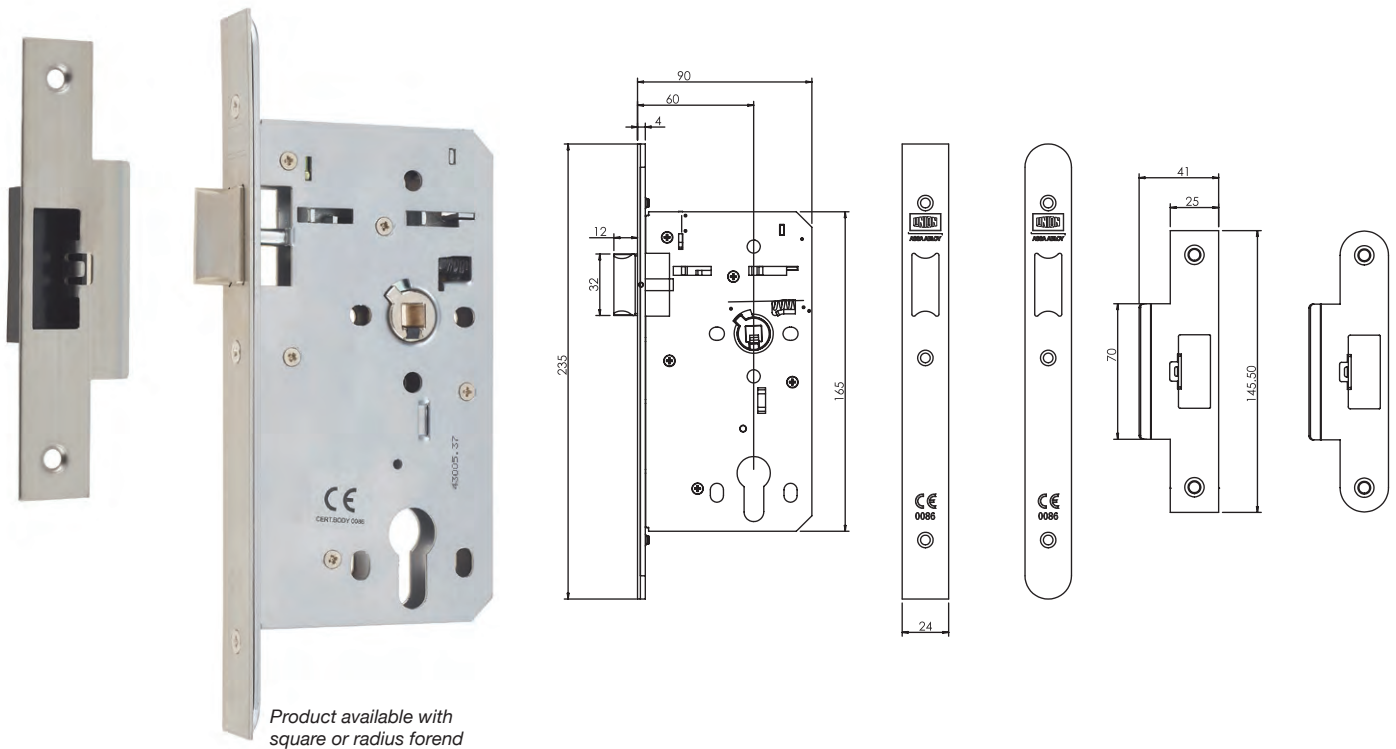


Deadlock function from the inside	Deadbolt locked and unlocked by operation of the cylinder key / cylinder turn.
Deadlock function from the outside	Deadbolt locked and unlocked by operation of the cylinder key / cylinder turn.
Angle of lever operation	N/A
Furniture	N/A
Cylinders	Euro Profile Double cylinder or Cylinder and thumbturn.
Fixings	Lockcase pierced to accept both through door furniture with 38mm centres.
Handing	N/A

Backset	60mm
Follower	N/A
Lockcase Depth	90mm
Height	165mm
Thickness	16mm
Centre Distance	N/A
Inner Forend	Radius
Outer Forend	Radius or Square
Forend Size	235mm (L) x 24mm (W)
Deadbolt Throw	20mm single throw
Deadbolt Material	Steel chrome plated
Case Material	Enclosed case. Heavy duty mild steel. Silver finish
Faceplates & Strikeplate Material	Grade 304 Satin Stainless Steel
Splinter box	Black plastic

The HD72 Range

Mortice Latch



Product available with square or radius forend

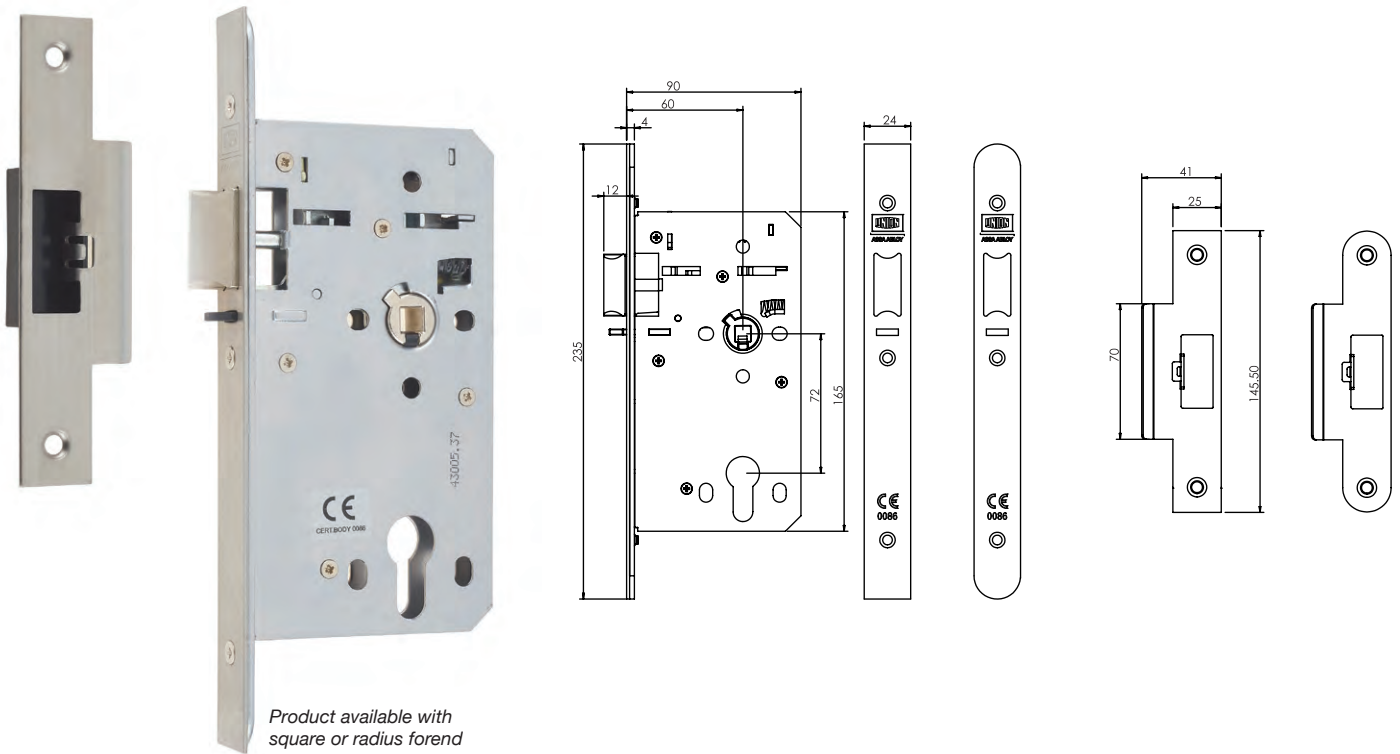


JHD72LA-S-SS60	HD72 Mortice Latch – Square forend – Stainless Steel – 60mm Backset											
JHD72LA-R-SS60	HD72 Mortice Latch – Radius forend – Stainless Steel – 60mm Backset											
Performance standards	BS EN 12209:2003	3	X	8	1	0	G	-	B	0	2	0
Tested cycles	Latch tested through the follower to 3.5M cycles											
CE Marked	Cert No 0086-CPR-658463											
Fire Tested	EN1634 and Certifire approved CF5543 Timber 30 mins, 60 mins. Metal 240 mins. For 30 min fire doors use 1mm interdens, for 60 min fire doors use 2mm interdens											

Mortice latch function from the inside	Latch bolt withdrawn by lever handle.
Mortice latch function from the outside	Latch bolt withdrawn by lever handle.
Angle of lever operation	35°
Furniture	For use with sprung or unsprung door furniture weighing up to 930g per pair.
Cylinders	N/A
Fixings	Lockcase pierced to accept both through door furniture with 38mm centres.
Handing	Reversible. Suits Left hand and Right hand.

Backset	60mm
Follower	8mm
Lockcase Depth	90mm
Height	165mm
Thickness	16mm
Centre Distance	N/A
Inner Forend	Radius
Outer Forend	Radius or Square
Forend Size	235mm (L) x 24mm (W)
Deadbolt Throw	N/A
Latch Material	Steel chrome plated
Case Material	Enclosed case. Heavy duty mild steel. Silver finish
Faceplates & Strikeplate Material	Grade 304 Satin Stainless Steel
Splinter box	Black plastic

Euro Profile Cylinder Mortise Deadlocking Nightlatch



Product available with square or radius forend



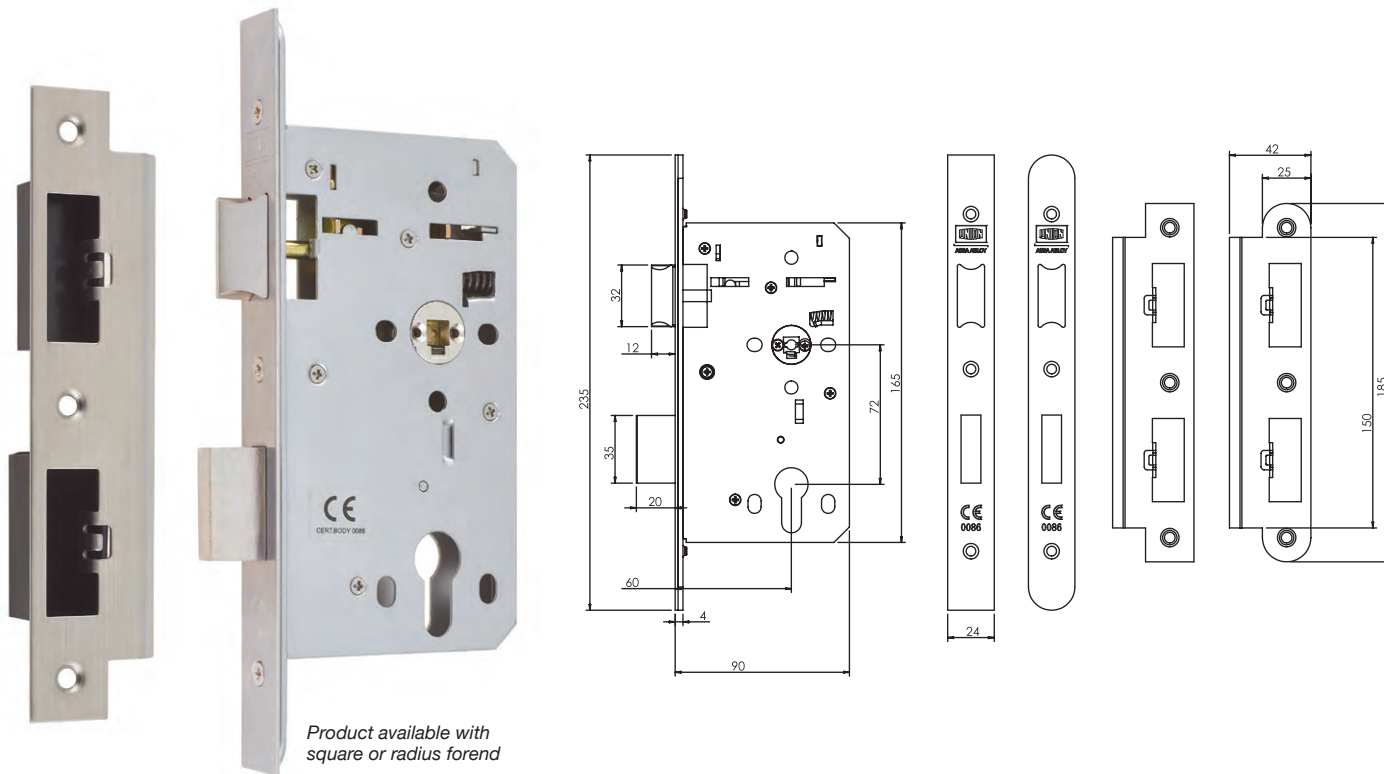
JHD72DNL-S-SS60	HD72 Deadlocking Nightlatch – Square forend – Stainless Steel – 60mm Backset						
JHD72DNL-R-SS60	HD72 Deadlocking Nightlatch – Radius forend – Stainless Steel – 60mm Backset						
Performance standards	BS EN 12209:2003	3	X	8	1	0	G 1 B B 2 0
Tested cycles	Latch tested through the follower to 3.5M cycles						
CE Marked	Cert No: 0086-CPR-658456						
Fire Tested	EN1634 and Certifire approved CF5543 Timber 30 mins, 60 mins. Metal 240 mins. For 30 min fire doors use 1mm interdens, for 60 min fire doors use 2mm interdens						

Deadlocking Nightlatch function from the inside	Latch bolt withdrawn by lever handle. Alternatively, a turn of the cylinder key or thumbturn will retract the latch head. When the door closes and the snib comes into contact with the strike the latch is deadlocked.
Deadlocking Nightlatch function from the outside	Latch bolt withdrawn by the cylinder key to unlock the door. When the door closes and the snib comes into contact with the strike the latch is deadlocked, a key must be used for re entry. NOTE: No lever handle is used on the outside to use pull handle or cylinder pull.
Angle of lever operation	35°
Furniture	For use with sprung or unsprung door furniture weighing up to 930g per pair.
Cylinders	Euro Profile Double cylinder, Cylinder and thumbturn or single cylinder.
Fixings	Lockcase pierced to accept both through door furniture with 38mm centres.
Handing	Reversible. Suits Left hand and Right hand.

Backset	60mm
Follower	8mm
Lockcase Depth	90mm
Height	165mm
Thickness	16mm
Centre Distance	72mm
Inner Forend	Radius
Outer Forend	Radius or Square
Forend Size	235mm (L) x 24mm (W)
Deadbolt Throw	N/A
Latch Material	Steel chrome plated
Case Material	Enclosed case. Heavy duty mild steel. Silver finish
Faceplates & Strikeplate Material	Grade 304 Satin Stainless Steel
Splinter box	Black plastic

The HD72 Range

Euro Profile Cylinder Mortice Escape Sashlock



For BS EN 179:2008 compliance the lock must be fitted with a J-1000RRU01SS or J-1000RRS01SS



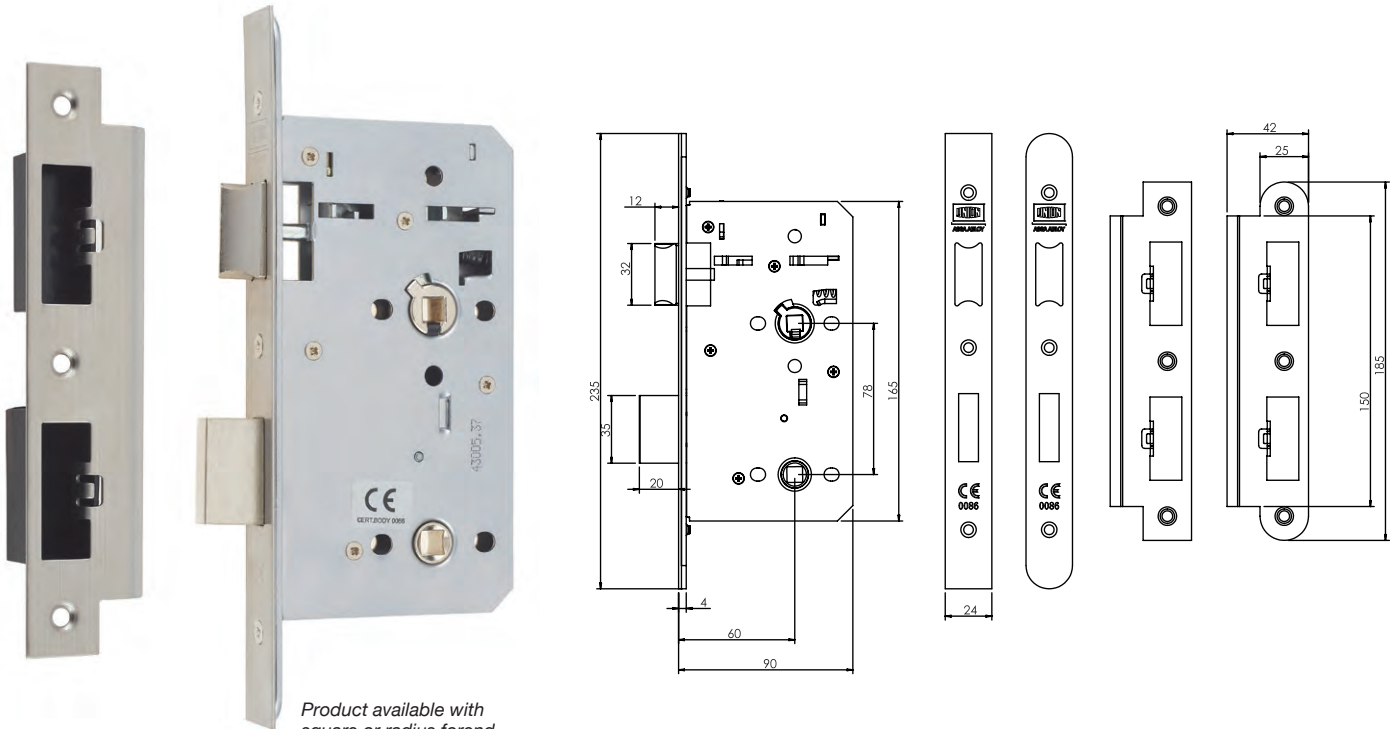
JHD72ESL-S-SS60	HD72 Escape Sashlock – Square forend – Stainless Steel – 60mm Backset
JHD72ESL-R-SS60	HD72 Escape Sashlock – Radius forend – Stainless Steel – 60mm Backset

Performance standards	BS EN 12209:2003	3	X	8	1	0	3	B	A	2	0	
	BS EN 179:2008	3	7	6	B	1	3	4	2	A	B/D	
Tested cycles	Latch tested through the follower to 3.5M cycles											
CE Marked	BS EN 12209: 2003	Cert No 0086-CPR-670621										
	BS EN 179: 2008	Cert No 0087-CPR-658455										
Fire Tested	EN1634 and Certifire approved CF5543 Timber 30 mins, 60 mins. Metal 240 mins. For 30 min fire doors use 1mm interdens, for 60 min fire doors use 2mm interdens											

Escape Sashlock function from the inside	When deadlocked the latch and deadbolt are retracted simultaneously with a single operation of the lever handle. When unlocked only the latch is retracted. Deadbolt locked and unlocked by operation of the cylinder key / cylinder turn. On a second turn the cylinder will retract the latch head.
Escape Sashlock function from the outside	Latch bolt withdraw by lever handle. Deadbolt locked and unlocked by operation of the cylinder key/ cylinder turn. On a second turn the cylinder will retract the latch head.
Angle of lever operation	35°
Furniture	For use with sprung or unsprung door furniture weighing up to 930g per pair.
Cylinders	Euro Profile Double cylinder or Cylinder and thumbturn.
Fixings	Lockcase pierced to accept both through door furniture with 38mm centres.
Handing	Reversible. Suits Left hand and Right hand. Split follower reversible to suit either side of panic operation.

Backset	60mm
Follower	8mm split follower (reversible)
Lockcase Depth	90mm
Height	165mm
Thickness	16mm
Centre Distance	72mm
Inner Forend	Radius
Outer Forend	Radius or Square
Forend Size	235mm (L) x 24mm (W)
Deadbolt Throw	20mm single throw
Latch & Deadbolt Material	Steel chrome plated
Case Material	Enclosed case. Heavy duty mild steel. Silver finish
Faceplates & Strikeplate Material	Grade 304 Satin Stainless Steel
Splinter box	Black plastic
Split Spindle	Supplied with lockcase

Mortice Bathroom Lock



Product available with square or radius forend

Bathroom follower is 8mm and is supplied with a 5mm adaptor to allow turn and emergency release with either 8mm or 5mm spindles.



JHD72WC-S-SS60	HD72 Bathroom Lock – Square forend – Stainless Steel – 60mm Backset											
JHD72WC-R-SS60	HD72 Bathroom Lock – Radius forend – Stainless Steel – 60mm Backset											
Performance standards	BS EN 12209:2003	3	X	8	1	0	G	1	B	G	2	0
Tested cycles	Latch tested through the follower to 3.5M cycles											
CE Marked	Cert No 0086-CPR-658470											
Fire Tested	EN1634 and Certifiere approved CF5543 Timber 30 mins, 60 mins. Metal 240 mins. For 30 min fire doors use 1mm interdens, for 60 min fire doors use 2mm interdens											

Bathroom lock function from the inside	Latch bolt withdraw by lever handle. Deadbolt locked and unlocked by operation of a privacy turn.
Bathroom lock function from the outside	Latch bolt withdraw by lever handle. In case of emergency the deadbolt can be unlocked by operating an emergency release with a coin.
Angle of lever operation	35°
Furniture	For use with sprung or unsprung door furniture weighing up to 930g per pair.
Fixings	Lockcase pierced to accept both through door furniture with 38mm centres.
Handing	Reversible. Suits Left hand and Right hand.

Backset	60mm
Follower	8mm
Lockcase Depth	90mm
Height	165mm
Thickness	16mm
Centre Distance	78mm
Inner Forend	Radius
Outer Forend	Radius or Square
Forend Size	235mm (L) x 24mm (W)
Deadbolt Throw	20mm single throw
Latch & Deadbolt Material	Steel chrome plated
Case Material	Enclosed case. Heavy duty mild steel. Silver finish
Faceplates & Strikeplate Material	Grade 304 Satin Stainless Steel
Splinter box	Black plastic

Fire Door Hardware from UNION

Fire door protection is a vital part of building design, containing and preventing the devastating spread of smoke and fire.

Fire doors and related hardware are designed to protect lives and offer protection to the remainder of the building, by reducing the spread of fire throughout a building.

Fire safety legislation is an ever-increasing and complex part of any building's design. The under specification of door hardware can lead to devastating consequences in the event of a fire, for the occupants and users of a building.

Range Overview

Most reputable businesses and landlords want to work in a property that conforms to fire regulations. Fire door safety depends on selecting the correct door hardware products, thus helping the door to provide an effective barrier against smoke and flames to protect lives.

UNION offer a wide range of quality products that meet the legislative requirements around fire doors and perform to the highest standards. UNION products are expertly designed and rigorously tested to ensure they exceed the legal requirements; you can be assured that when fitting a UNION fire door product you are covered.



Standards: In Brief

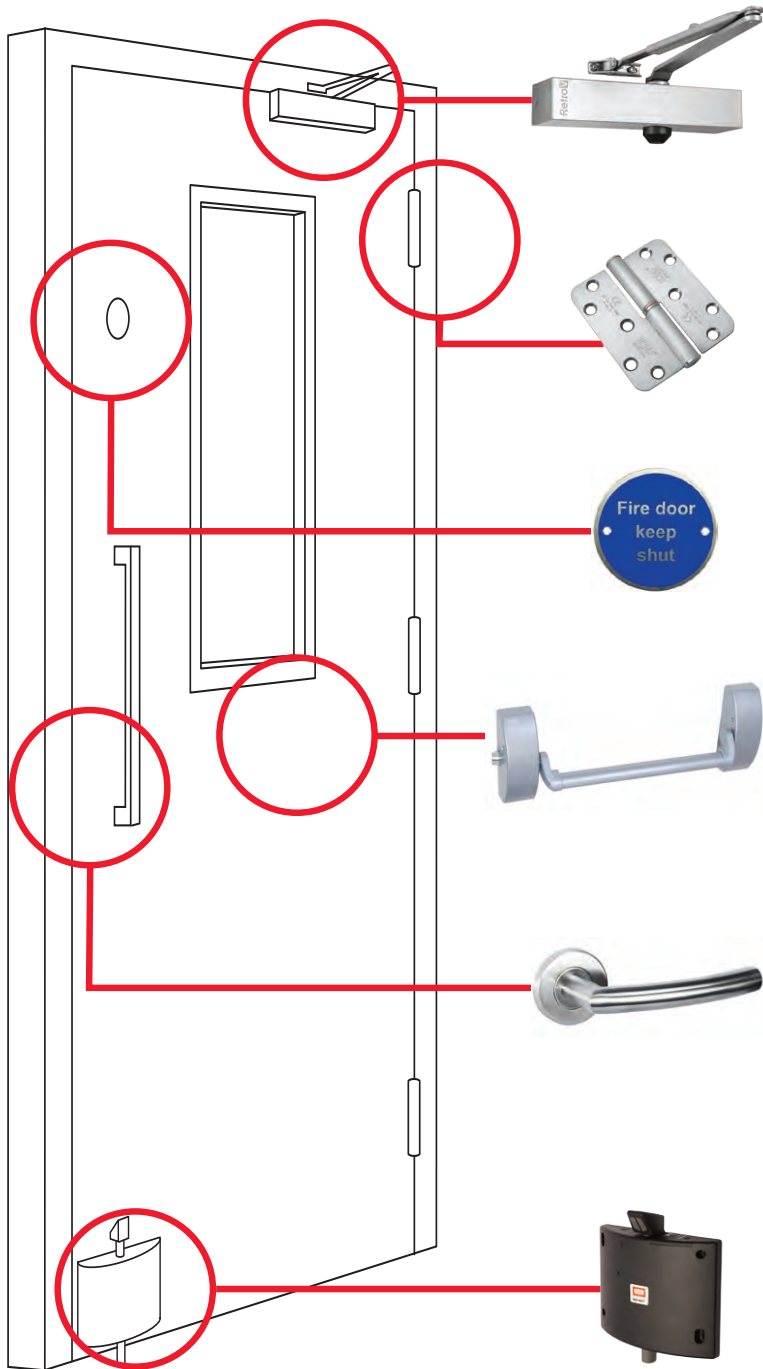
CE Marking is the main standard to ensure products can be used legally on fire doors. To obtain a CE Mark certificate the product has to undergo a rigorous three stage assessment as detailed in the relevant EN standard:

- Mechanical performance test
- A fire test to EN 1634
- A factory compliance audit by a notified body



Alongside the CE Mark UNION also puts relevant products through the renowned third party scheme called Certifire. This assures you are buying UNION products that demonstrate performance, quality, reliability and traceability - key factors when looking at such critical components.





Hinges

UNION Powerload hinges are suitable for heavy duty applications and for use on doors which are subject to a high frequency of use by the public with little incentive to exercise care.

Door Closers

The UNION range of surface-mounted rack and pinion closers includes models with fixed EN power size rating and closers with adjustable EN power size ratings.

With UNION door closers you can choose from a wide range for almost any application and environment, all subjected to the most rigorous fire tests to meet the EN 1154 or EN 1155 standards - a statutory requirement to achieve the CE mark since 2004.

Door Hold Open Solutions

Preventing a fire door from closing can put your insurance at risk - and land you in court if a fire takes hold. DoorSense is a standalone unit fixed in seconds that lets you keep a fire door open - and have it close if the alarm sounds, or at a set time.

Handles

UNION handles look great and are suitable for fire doors. Choose from a wide range of door handles in a range of styles in both straight and curved section.

Panic Exit Devices

EXIMO Panic Exit Devices can be used by anyone simply and easily. Fitted in minutes, EXIMO can be used for both internal and external doors, with external locking to add high security to ease of escape.

Signage

UNION fire door signs are made from tough, long lasting stainless steel, using industry standard blue and font sizing to ensure conformance with fire regulations.

Designed to perform. Built to last.

The HD72 range brings a new level of performance and durability in lockcases. With an incredible 3.5 million test cycles completed without failure you can be confident any door you specify the HD72 will work faultlessly for years to come. And it will look good too, with a heavy duty latch design combined with a 1° follower angle to give you the freedom to specify handles up to a heavyweight 930g.

The quality, reliability and expertise you find in the HD72 lock range has allowed them to be certified for use in any environment, to be used by anyone regardless of their abilities, and be the safe, secure lock people demand today.



Designed to make light of the heaviest duties

Tested to BS EN12209 (escape lock to EN179).

Sometimes you need a lock in environments where they never stop working - or where they may be continually abused.

All HD72 locks are CE Marked and fully tested to EN 12209 2003 (escape lock to BS EN 179 2008) - BS EN12209 Grade 3 category of use: High frequency of use by public or others (i.e. members of the public, students and employees etc.) with little incentive to exercise care and with a high chance of misuse, eg:

- Public doors
- Hospitals
- Schools
- Universities and colleges
- Leisure centres
- Commercial buildings



Equal access for all

It's vital that a lock can be used by anyone to both open a door and make it secure. The HD72 lockset range features 60mm backset and 72mm centres, helping you to work to best practices and ensuring they fulfill requirements and duties required under the Equality Act by satisfying the recommendations of BS 8300 2009 and Approved Document M 2015 (2016).



15 year guarantee

With any HD72 lock you will get a 15 year guarantee.



Approved for use on fire doors

CE Marking is the mandatory requirement for locks on fire doors. Specifying none CE marked product on fire doors is illegal and those found to be breaking the law will be prosecuted. Everyone is accountable in the chain of responsibility.

Products are included in successful fire tests as part of the CE marking process. Lockcases have a critical role on a fire door and this is to ensure that in the event of a fire:

- The door remains in the closed position, preventing fire, heat, and smoke from spreading throughout a building.
- A closed fire door will seal off one location from the next.
- The safe evacuation of a buildings occupants within a certain time frame, preventing the smoke and fire spreading into to escape passageways.
- Containment of fire and smoke reduces property damage and prevents small fires from growing.
- The heat is not transferred from the fire side of the door, creating an effective barrier.

HD72 is tested to EN 1634-1 2014 on 30 and 60 minute timber fire doors and 240 minute metal fire doors.



Certifire approved

The HD72 range is independently approved by Certifire for use in timber and metal fire doors.



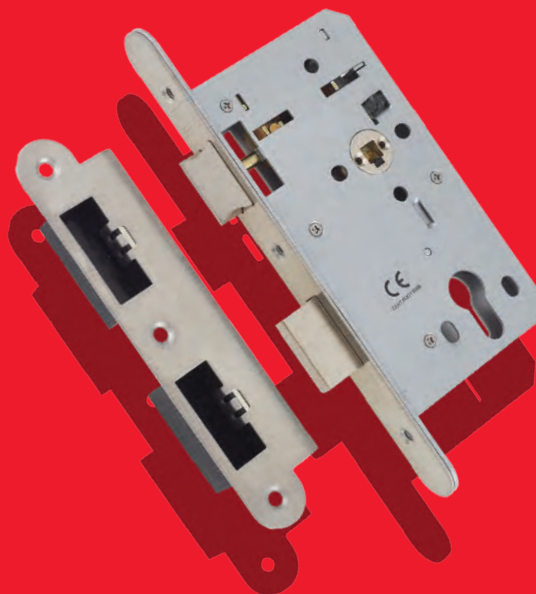
*Environmental Product Declaration (EPD) available. Find out more on www.uniononline.co.uk

HD72 is independently audited to ensure it supports UNION efforts in sustainability

Quality, Reliability, Expertise...
...three solid reasons to choose UNION

UNION quality

Achieving the perfect combination of technology and materials, each and every one of our products is manufactured to the highest specification – resulting in a quality of product that others can only aspire to.



UNION reliability

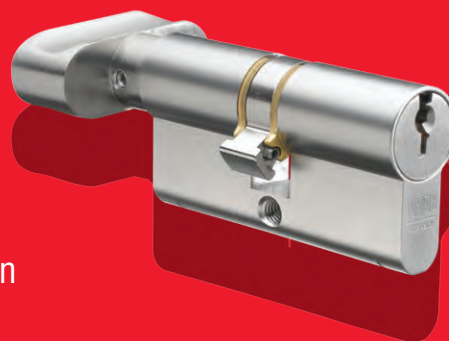
All of our products undergo the most rigorous testing – way beyond normal UK standards – in order to guarantee the longest lifetime of excellent performance.



UNION expertise

With a history going back to 1840, we're proud of our heritage, our expertise and our relentless work to deliver the best in door controls.

Combine that with ASSA ABLOY's resources and you can be confident that you're fitting a product you can trust.



ASSA ABLOY is the global leader in door opening solutions, dedicated to satisfying end-user needs for security, safety and convenience.

ASSA ABLOY

ASSA ABLOY Security Solutions
School Street
Willenhall
WV13 3PW
Tel: 0845 223 2124
Fax: 0845 223 2125
Export Tel: +44 1902 364107
Email: info@uniononline.co.uk
Web: www.uniononline.co.uk

Version 1 - January 2018