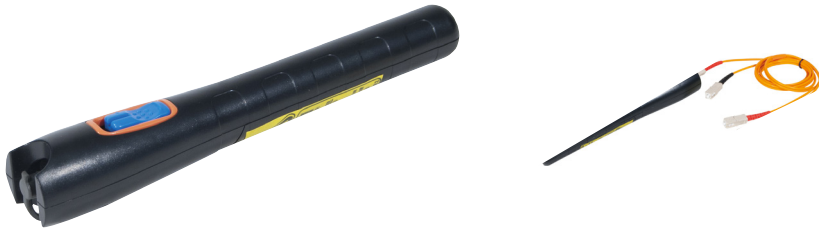


Visual Fault Locator



DESCRIPTION

The visual fault locator is a tool designed for fiber identification on your network. It can also help you locate the faulty single mode and multimode fibers. You can check for dead areas and do the basic maintenance of your network.

Main features:

- Supports continuous wave and 2Hz modulation work modes
- Extra strong laser tip for protection in case of dropping
- Lifespan: over 60 hours continuously
- Remains stable even in a low battery status
- Universal adapter: 2.5mm for SC/ST connectors

Specifications:

- Wavelength: 650nm \pm 10nm
- Light source: Laser FP-LD
- Output power: 1mW
- Connector: 2.5-mm universal adapter
- Operating temperature: 0~50°C
- Storage temperature: -25~+70°C
- Power supply: 2 x AA batteries
- Lifespan: 60 hours
- Weight: 100g without the batteries
- Dimensions: 23 x 207 mm

TECHNICAL CHARACTERISTICS

Brand : GENERIQUE

Part number : ECF-395354