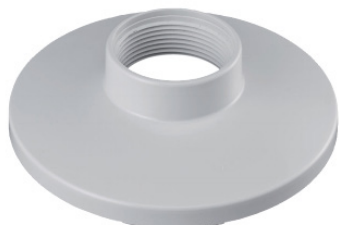


BOSCH NDA-5031-PIP



DESCRIPTION

This camera-specific accessory is designed for use with the new line of Bosch's universal accessories. The modular camera mounts & accessories are a family of mounts, mounting adapters, pendant interface plates and surveillance cabinets which can be used with a wide range of Bosch cameras. The accessories are easy to install and can be combined to simplify installation in multiple locations whilst retaining the same look and feel.

The NDA-5031-PIP is designed especially for indoor use with the FLEXIDOME 4/5000i family. It provides a safe and robust solution to mount the camera to:

- NDA-U-WMT Pendant wall mount
- NDA-U-PMT Pendant pipe mount

TECHNICAL CHARACTERISTICS

Brand : BOSCH

Part number : NDA-5031-PIP

Caractéristiques :

Type : Pendant bracket

Housing material : Polycarbonate (PC)

Placement supported : Indoor

Product colour : White

Quantity per pack : 1 pc(s)

Weight : 110 g