



# Hydraulic Hose Tech Data Sheet

TECH DATA SHEET 5001

# Hydraulic Hose Range



## SAE 100R1AT, EN853, DIN20022 1 Wire Hydraulic Hose

### Application:

Medium pressure hydraulic applications

### Specification:

DIN 20022, EN853 – 1 Exceeds 100 R1AT

### Construction:

Inner tube: oil resistant synthetic rubber (NBR)

Reinforcement: 1 single steel wire braid

Outer cover: oil and weather resistant synthetic rubber

### Recommended Fluids:

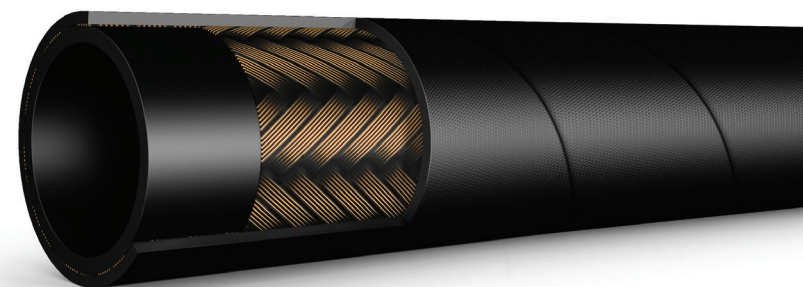
Hose suitable for petroleum based hydraulic oil and water-glycol based fluids, air and water

**NB:** For air above 17 bar, the hose cover must be pin-pricked

Available per 1 metre

**Smooth cover available on request**

**° Working Temperature:**  
-40°C to +100°C



**FT PRO 100R1AT - 04 - DIN 20022 - EN853 - SAE 100R1AT - 1/4" - 06MM - W.P. 225 BAR MSHA IC-267 (Q3 24)**

Part Number	Size			ID		OD 1SN	Working Pressure		Burst Pressure		Bend Radius		Weight	Crimping Dimensions	Size in mm	Tail ID Top Tolerance	Tail ID Bottom Tolerance	Crimped No Go	Crimped Go
	mm	inch	SAE	min	max	max	bar	psi	bar	psi	Inch	mm	Kg/mtr	FT3 Type Ferrule	mm	mm	mm	mm	mm
100R1AT-03	4.7	3/16	-3	4.9	5	12.5	250	3625	1000	14503	3.54	90	0.19	FT3-12-03CF	15	2.89	3.05	2.80	2.93
100R1AT-04	6.3	1/4	-4	6.4	7	14.1	225	3260	900	13050	3.94	100	0.25	FT3-12-04CF	17.8	3.86	3.67	3.67	3.45
100R1AT-05	8	5/16	-5	7.9	8.5	15.7	215	3120	850	12325	4.53	115	0.31	FT3-12-05CF	20.5	5.29	5.11	5.11	4.91
100R1AT-06	10	3/8	-6	9.5	10.1	18.1	180	2610	720	10440	5.12	130	0.36	FT3-12-06CF	21.6	6.78	6.42	6.42	6.13
100R1AT-08	12.5	1/2	-8	12.7	13.5	21.4	160	2320	640	9280	7.09	180	0.45	FT3-12-08CF	24	9.21	8.86	8.86	8.4
100R1AT-10	16	5/8	-10	15.8	16.7	24.5	130	1885	520	7540	7.87	200	0.52	FT3-12-10CF	28.7	12.09	11.59	11.59	10.99
100R1AT-12	19	3/4	-12	18.8	19.8	28.5	105	1520	420	6090	9.45	240	0.65	FT3-12-12CF	31.3	14.46	13.91	13.91	13.31
100R1AT-16	25	1	-16	25.4	26.4	36.6	88	1280	350	5075	11.81	300	0.91	FT3-12-16CF	41	18.89	18.29	18.29	17.68
100R1AT-20	31.5	1.1/4	-20	31.8	33	44.8	63	910	250	3625	16.54	420	1.30	FT3-12-20CF	48.5	25.4	24.69	24.69	23.8
100R1AT-24	38	1.1/2	-24	38.1	39.3	52.1	50	725	200	2900	19.69	500	1.7	FT3-12-24CF	58.5	31.4	30.6	30.6	29.8
100R1AT-32	51	2	-32	50.6	52	65.5	40	580	160	2320	24.8	630	2	FT3-12-32CF	70	41.4	40.6	40.6	30.8