

Instantaneous Branchpipe & Nozzles



Aluminium Unpolished

Products available in:

Light Alloy - Natural Finish

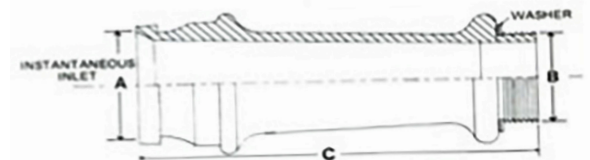
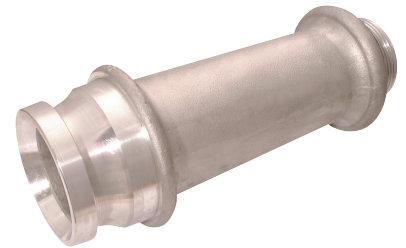
Gunmetal - Natural Finish

Polished and **Anodized** surface finishes are available for **Light Alloy** when specified

Chrome plated surface finish is available for **gunmetal** when specified

Maximum Working Pressure: 16 bar

Maximum Test Pressure: 24 bar



Part Number	Size A	Size B	Size C
BSP212	2.1/2"	1.3/4"	8.3/8"

Products available in:

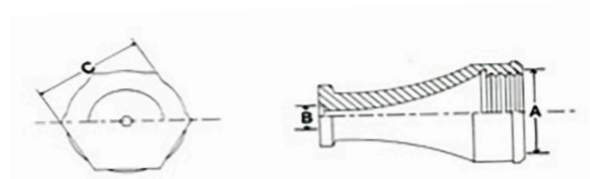
Light Alloy - Natural Finish

Gunmetal - Natural Finish

Polished and **Anodized** surface finishes are available for **Light Alloy** when specified

Maximum Working Pressure: 16 bar

Maximum Test Pressure: 24 bar



Part Number	Female BSP Inlet A	Jet Diameter B	Hex C	Flow Rate @ 7 bar	Weight
SNO12JET	1.3/4"	12.5mm	2.3/8"	57 L/M	Light Alloy: 0.2KGS Gunmetal: 0.7KGS
SNO58JET	1.3/4"	15mm	2.3/8"	90 L/M	Light Alloy: 0.2KGS Gunmetal: 0.7 KGS
SNO34JET	1.3/4"	20mm	2.3/8"	130 L/M	Light Alloy: 0.2 KGS Gunmetal: 0.7 KGS

Products available in:

Light Alloy - Natural Finish

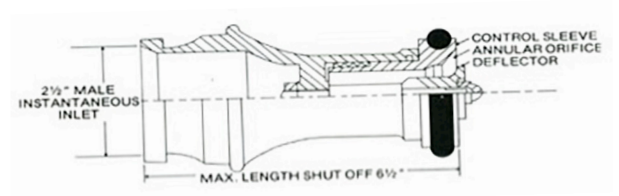
Gunmetal - Natural Finish

Polished and **Anodized** surface finishes are available for **Light Alloy** when specified

Chrome plated surface finish is available for **gunmetal** when specified

Maximum Working Pressure: 16 bar

Maximum Test Pressure: 24 bar



Part Number	Male Instantaneous Inlet	Nominal Size	Straight Stream	Max Spray	Weight
BD212	2.1/2"	16mm	420 L/M	520 L/M	Light Alloy: 0.7KGS Gunmetal: 1.9KGS