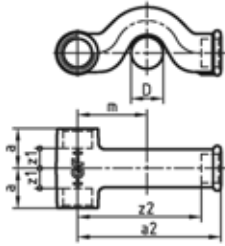




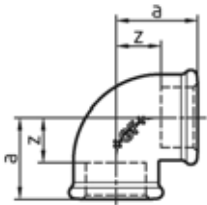
## 87 Tee with crossover branch



EN		Dim. [inch]	Code	a [mm]	a2 [mm]	z1 [mm]	z2 [mm]	D [inch]	m [mm]
-	G	1/2	<b>770 087 204</b>	26	93	13	80	1/2	45



## 90 Elbow 90°, equal, ISO/EN A1



EN		Dim. [inch]	Code	a [mm]	z [mm]
•	B	1/8	<b>770 090 101</b>	19	12
•	G	1/8	<b>770 090 201</b>	19	12
•	B	1/4	<b>770 090 102</b>	21	11
•	G	1/4	<b>770 090 202</b>	21	11
•	B	3/8	<b>770 090 103</b>	25	15
•	G	3/8	<b>770 090 203</b>	25	15
•	B	1/2	<b>770 090 104</b>	28	15
•	G	1/2	<b>770 090 204</b>	28	15
•	B	3/4	<b>770 090 105</b>	33	18
•	G	3/4	<b>770 090 205</b>	33	18
•	B	1	<b>770 090 106</b>	38	21
•	G	1	<b>770 090 206</b>	38	21
•	B	1 1/4	<b>770 090 107</b>	45	26
•	G	1 1/4	<b>770 090 207</b>	45	26
•	B	1 1/2	<b>770 090 108</b>	50	31
•	G	1 1/2	<b>770 090 208</b>	50	31
•	B	2	<b>770 090 109</b>	58	34
•	G	2	<b>770 090 209</b>	58	34
•	B	2 1/2	<b>770 090 110</b>	69	42
•	G	2 1/2	<b>770 090 210</b>	69	42
•	B	3	<b>770 090 111</b>	78	48
•	G	3	<b>770 090 211</b>	78	48
•	B	4	<b>770 090 112</b>	96	60
•	G	4	<b>770 090 212</b>	96	60