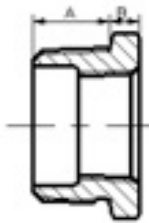
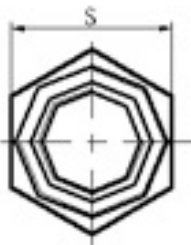


Malleable Iron Fittings

Male x Female Reducing Bush (241)



| Part Number | | Size | | Dimensions (mm) | | |
|------------------|-----------------|-------------|--------|-----------------|------|-------|
| Black | Galvanised | Inch | mm | A | B | S |
| K-MI241-38-14N | K-MI241-38-14 | 3/8x1/4 | 10x8 | 12.2 | 4.1 | 17.3 |
| K-MI241-12-14N | K-MI241-12-14 | 1/2x1/4 | 15x8 | 14.2 | 4.8 | 22.1 |
| K-MI241-12-38N | K-MI241-12-38 | 1/2x3/8 | 15x10 | 14.2 | 4.8 | 22.1 |
| K-MI241-34-14N | K-MI241-34-14 | 3/4x1/4 | 20x8 | 16 | 5.6 | 29.2 |
| K-MI241-34-38N | K-MI241-34-38 | 3/4x3/8 | 20x10 | 16 | 5.6 | 29.2 |
| K-MI241-34-12N | K-MI241-34-12 | 3/4x1/2 | 20x15 | 16 | 5.6 | 29.2 |
| K-MI241-1-14N | K-MI241-1-14 | 1x1/4 | 25x8 | 22 | 7 | 35 |
| K-MI241-1-38N | K-MI241-1-38 | 1x3/8 | 25x10 | 21 | 7 | 35 |
| K-MI241-1-12N | K-MI241-1-12 | 1x1/2 | 25x15 | 19.1 | 6.4 | 36.1 |
| K-MI241-1-34N | K-MI241-1-34 | 1x3/4 | 25x20 | 19.1 | 6.4 | 36.1 |
| K-MI241-114-38N | K-MI241-114-38 | 1.1/4x3/8 | 32x10 | 24 | 8 | 45 |
| K-MI241-114-12N | K-MI241-114-12 | 1.1/4x1/2 | 32x15 | 24 | 8 | 45 |
| K-MI241-114-34N | K-MI241-114-34 | 1.1/4x3/4 | 32x20 | 20.3 | 7.1 | 44.7 |
| K-MI241-114-1N | K-MI241-114-1 | 1.1/4x1 | 32x25 | 20.3 | 7.1 | 44.7 |
| K-MI241-112-12N | K-MI241-112-12 | 1.1/2x1/2 | 40x15 | 22 | 9 | 50 |
| K-MI241-112-34N | K-MI241-112-34 | 1.1/2x3/4 | 40x20 | 22 | 9 | 50 |
| K-MI241-112-1N | K-MI241-112-1 | 1.1/2x1 | 40x25 | 21.1 | 7.9 | 50.8 |
| K-MI241-112-114N | K-MI241-112-114 | 1.1/2x1.1/4 | 40x32 | 21.1 | 7.9 | 50.8 |
| K-MI241-2-12N | K-MI241-2-12 | 2x1/2 | 50x15 | 28 | 11 | 63.2 |
| K-MI241-2-34N | K-MI241-2-34 | 2x3/4 | 50x20 | 26.5 | 11 | 63.2 |
| K-MI241-2-1N | K-MI241-2-1 | 2x1 | 50x25 | 26 | 9 | 63.2 |
| K-MI241-2-114N | K-MI241-2-114 | 2x1.1/4 | 50x32 | 22.4 | 8.6 | 63 |
| K-MI241-2-112N | K-MI241-2-112 | 2x1.1/2 | 50x40 | 22.4 | 8.6 | 63 |
| K-MI241-212-12N | K-MI241-212-12 | 2.1/2x1.1/2 | 65x40 | 29 | 11 | 79 |
| K-MI241-212-34N | K-MI241-212-34 | 2.1/2x3/4 | 65x20 | 29 | 11 | 80 |
| K-MI241-212-1N | K-MI241-212-1 | 2.1/2x1 | 65x25 | 30 | 12 | 80 |
| K-MI241-212-114N | K-MI241-212-114 | 2.1/2x1.1/4 | 65x32 | 32 | 12 | 80 |
| K-MI241-212-112N | K-MI241-212-112 | 2.1/2x1.1/2 | 65x40 | 29 | 11 | 79 |
| K-MI241-212-2N | K-MI241-212-2 | 2.1/2x2 | 65x50 | 29 | 11 | 79 |
| K-MI241-3-1N | K-MI241-3-1 | 3x1 | 80x25 | 35 | 13 | 95 |
| K-MI241-3-112N | K-MI241-3-112 | 3x1.1/2 | 80x40 | 35 | 13 | 95 |
| K-MI241-3-2N | K-MI241-3-2 | 3x2 | 80x50 | 28.7 | 12.2 | 83.3 |
| K-MI241-3-212N | K-MI241-3-212 | 3x2.1/2 | 80x65 | 32 | 12 | 94 |
| K-MI241-4-34N | K-MI241-4-34 | 4x3/4 | 100x20 | 37 | 14 | 121 |
| K-MI241-4-1N | K-MI241-4-1 | 4x1 | 100x25 | 37 | 14 | 121 |
| K-MI241-4-114N | K-MI241-4-114 | 4x1.1/4 | 100x32 | 37 | 14 | 121 |
| K-MI241-4-112N | K-MI241-4-112 | 4x1.1/2 | 100x40 | 37 | 14 | 121 |
| K-MI241-4-2N | K-MI241-4-2 | 4x2 | 100x50 | 36 | 15 | 120 |
| K-MI241-4-212N | K-MI241-4-212 | 4x2.1/2 | 100x65 | 41 | 15 | 120 |
| K-MI241-4-3N | K-MI241-4-3 | 4x3 | 100x80 | 31 | 12.7 | 117.3 |