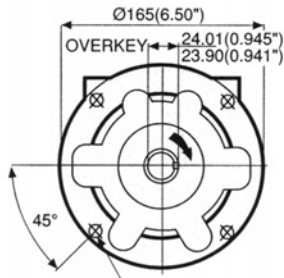
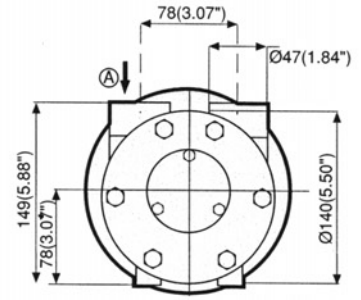
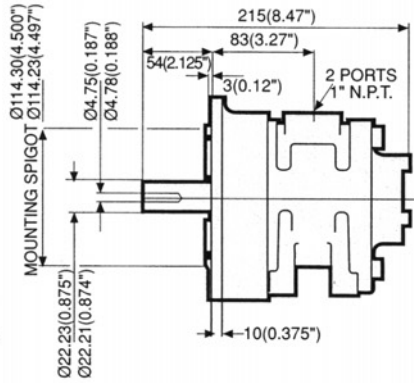


# DIMENSIONS V8

MODEL VA8C I45 TC Configuration

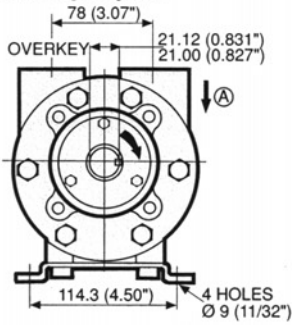


4 HOLES TAPPED 3/8" - 16 UNC ON 149.23(5.875") P.C.D.

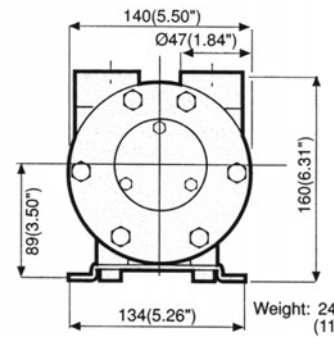
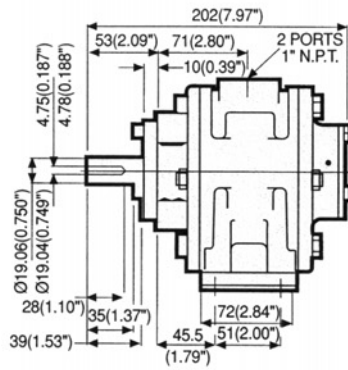


Weight: 26lb (11.8kg)

MODEL VA8J Foot Mounting Configuration

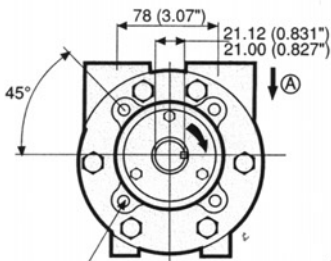


4 HOLES Ø 9 (11/32")

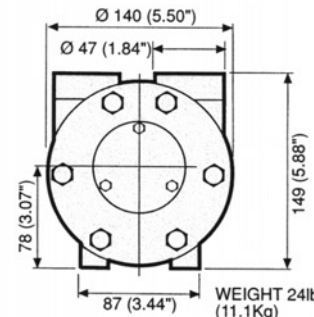
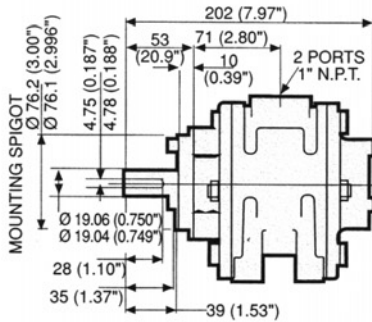


Weight: 24lb (11.1kg)

MODEL VA8X Face Mounting Configuration

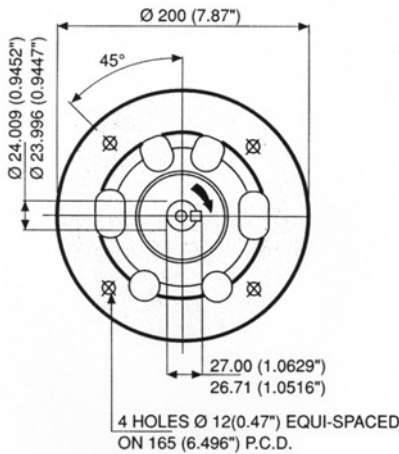


4 HOLES TAPPED 3/8" - 16 UNC X 16 DEEP EQUISPACED ON 98.43 (3.875") P.C.D.

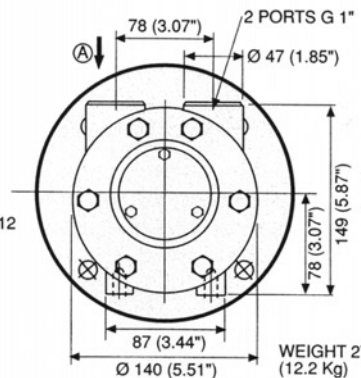
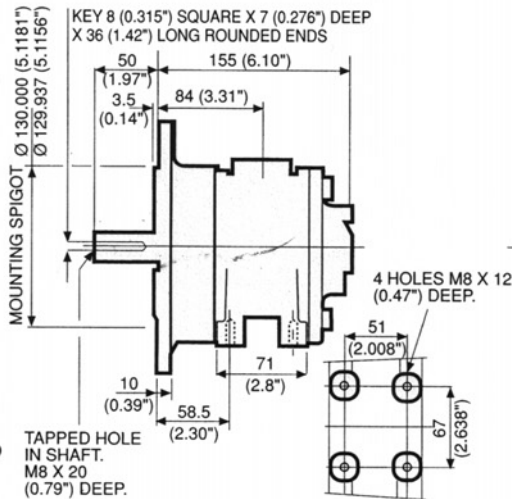


WEIGHT 24lbs (11.1Kg)

MODEL VS8C D90 Flange Configuration



4 HOLES Ø 12(0.47") EQUI-SPACED ON 165 (6.496") P.C.D.

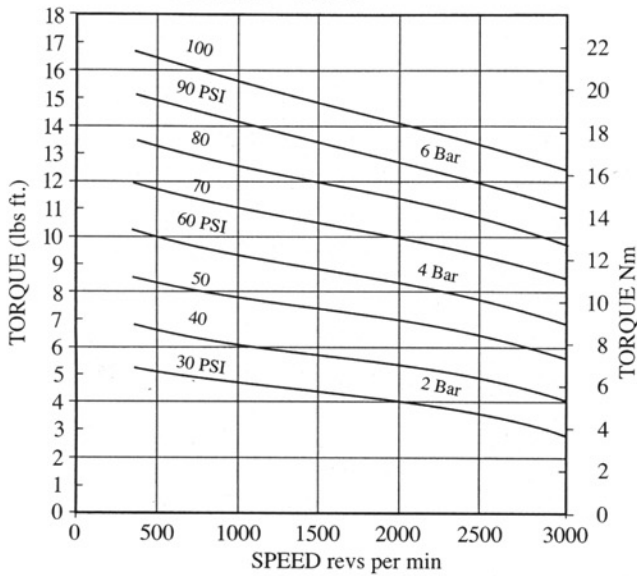


WEIGHT 27 lbs (12.2 Kg)

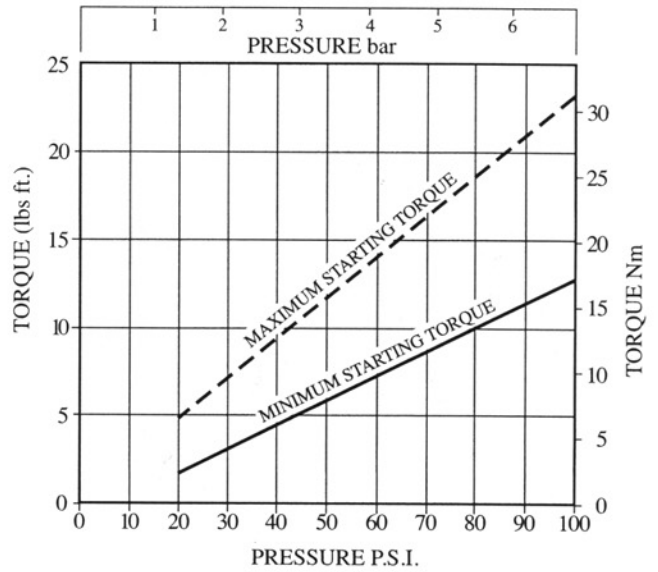
NOTE: With mains air at (A) shaft rotation is clockwise. Reverse port connections for opposite rotation. Muffler supplied with motor.

# PERFORMANCE V8 7.2 HP/5.4 kW REVERSIBLE

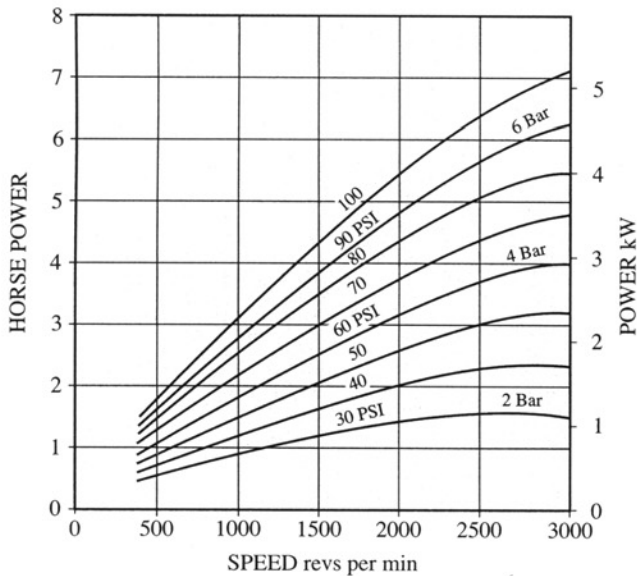
**GRAPH 1 TORQUE - SPEED**



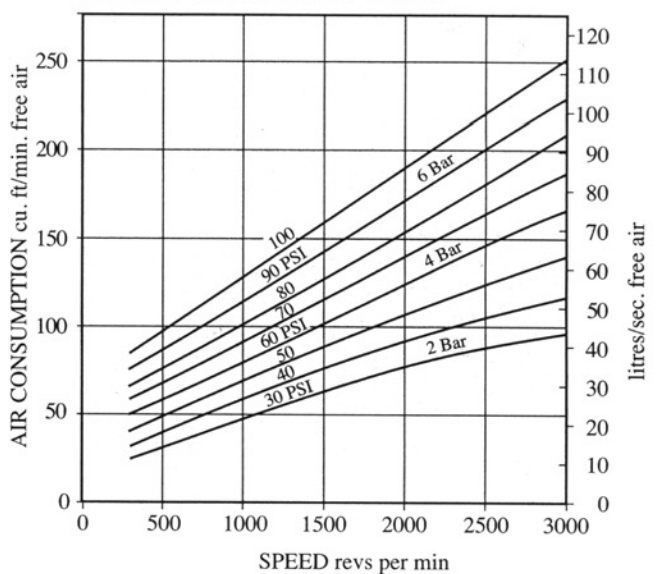
**GRAPH 2 STARTING TORQUE - PRESSURE**



**GRAPH 3 POWER - SPEED**



**GRAPH 4 CONSUMPTION - SPEED**



**Attitude:**

The motor can be operated in all positions.

**Airline filtration and lubrication:**

Use 64 micron filtration or better. Choose a lubricator suitable for the flow required. Prior to start up, inject oil into the inlet port.

**Lubricator drop rate:**

6-7 drops per minute continuous operation.  
12-15 drops per minute intermittent operation.

**Polar Moment of Inertia:**

3.5 lb.ins<sup>2</sup> (1.02 g.m<sup>2</sup>).

**Maximum overhung force on shaft:**

140 lbf (620N) In certain circumstances this may be extended. Consult your Globe Distributor. Axial loads should be kept down to a minimum.

**Maximum temperatures:**

-4° to +176° Farenheit. (-20° to +80°C)