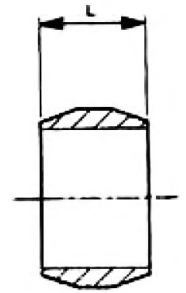


# Brass Compression Ring, Imperial

# Wade

## Features & Benefits

- A range of brass compression rings designed for use with imperial outside diameter plain copper and PVC covered copper tubes
- Specifically designed for use in combination with Wade bodies and compression nuts, we cannot recommend interchangeability with other brands



Part No	Tube OD	L Length
WADE-449/1	3/16"	0.218"
WADE-499/3	1/4"	0.25"
WADE-499/5	5/16"	0.25"
WADE-499/8	3/8"	0.281"
WADE-499/11	1/2"	0.312"