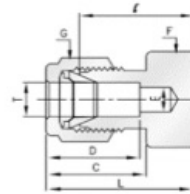


316 Stainless Steel Twin Ferrule Metric Tube Fittings



Caps

Tube



Part No	T mm	F	G	D	C	I	L
C-3	3	12	12	12.9	15.3	13.5	20.1
C-4	4	12	12	13.7	16.1	14.7	21.3
C-6	6	14	14	15.3	17.7	15.7	23.1
C-8	8	15	16	16.2	18.6	17.0	24.5
C-10	10	18	19	17.2	19.5	19.0	26.6
C-12	12	22	22	22.8	22.0	19.0	29.1
C-15	15	24	25	24.4	22.0	19.8	29.9
C-16	16	24	25	24.4	22.0	19.8	29.9
C-18	18	27	30	24.4	22.0	21.3	31.4
C-20	20	30	32	26.0	22.0	23.9	34.0
C-22	22	30	32	26.0	22.0	23.9	34.0
C-25	25	35	38	31.3	26.5	26.2	38.5