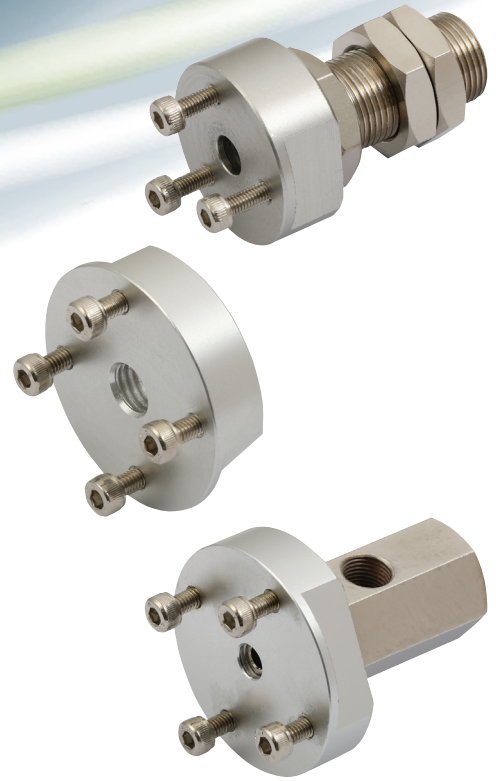


VACUUM PAD ADAPTOR PLATES

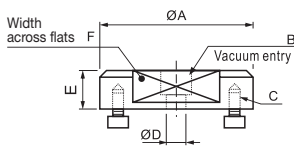
Ordering Code

K C - Z P	T	1	A14													
Model	Bracket Type	Suitable for Pad Diameter	Connection													
KC-ZP : Vacuum Pad	T : Vertical Vacuum Entry X : Lateral Vacuum Entry	1 : 40-50mm Ø 2 : 63-80mm Ø 3 : 100-125mm Ø	<table border="1"> <tr> <td rowspan="2">Vertical Male Thread</td> <td>A14 : M14x1</td> </tr> <tr> <td>A16 : M16x1.5</td> </tr> <tr> <td rowspan="4">Vertical Female Thread</td> <td>B8 : M8x1.25</td> </tr> <tr> <td>B10 : M10x1.5</td> </tr> <tr> <td>B12 : M12x1.75</td> </tr> <tr> <td>B16 : M16x1.5</td> </tr> <tr> <td rowspan="2">Lateral Female Thread</td> <td>B8 : M8x1.25</td> </tr> <tr> <td>B10 : M10x1.5</td> </tr> <tr> <td></td> <td>B12 : M12x1.75</td> </tr> </table>	Vertical Male Thread	A14 : M14x1	A16 : M16x1.5	Vertical Female Thread	B8 : M8x1.25	B10 : M10x1.5	B12 : M12x1.75	B16 : M16x1.5	Lateral Female Thread	B8 : M8x1.25	B10 : M10x1.5		B12 : M12x1.75
Vertical Male Thread	A14 : M14x1															
	A16 : M16x1.5															
Vertical Female Thread	B8 : M8x1.25															
	B10 : M10x1.5															
	B12 : M12x1.75															
	B16 : M16x1.5															
Lateral Female Thread	B8 : M8x1.25															
	B10 : M10x1.5															
	B12 : M12x1.75															

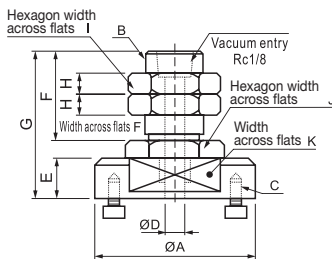


Dimensions

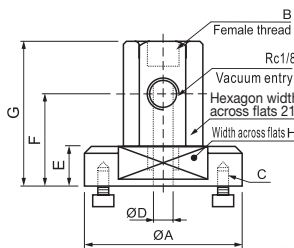
All sizes are in millimetres unless stated otherwise.



Model	ØA	B	C	ØD	E	F
KC-ZPT1-B8	28	M8x1.25	3-M3x0.5	6	11.5	24
KC-ZPT1-B10		M10x1.5				
KC-ZPT2-B8	45	M8x1.25	4-M4x0.7	8	11.5	37
KC-ZPT2-B10		M10x1.5				
KC-ZPT2-B12		M12x1.75				
KC-ZPT2-B16		M16x1.5				
KC-ZPT3-B12	70	M12x1.75	4-M5x0.8	10	13	60
KC-ZPT3-B16		M16x1.5				



Model	ØA	B	C	ØD	E	F	G	H	I	J	K
KC-ZPT1-A14	28	M14x1	3-M3x0.5	3	11.5	25	41.5	5	19	19	24
KC-ZPT2-A16	45	M16x1.5	4-M4x0.7	8	11.5	25	41.5	6	22	24	37
KC-ZPT3-A16	70	M16x1.5	4-M5x0.8	8	13	25	43	6	22	24	60



Model	ØA	B	C	ØD	E	F	G	H
KC-ZPX1-B01-B8	28	M8x1.25	3-M3x0.5	3	11.5	15	48.5	24
KC-ZPX1-B01-B10		M10x1.5						
KC-ZPX2-B01-B10	45	M10x1.5	4-M4x0.7	4	11.5	26.5	48.5	37
KC-ZPX2-B01-B12		M12x1.75						
KC-ZPX3-B01-B10	70	M10x1.5	4-M5x0.8	4	13	28	50	60
KC-ZPX3-B01-B12		M12x1.75						