

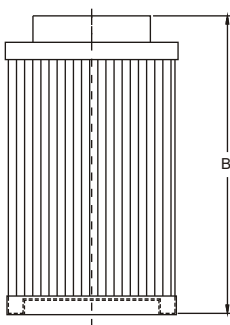
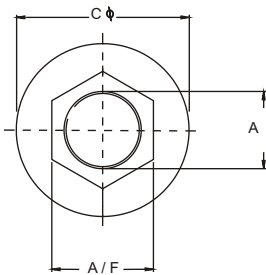


# Reservoir Accessories

## Suction Strainer - SS

### Specification:

- Reusable Stainless Steel 100 MESH/149 Micron Standard
- Nylon Nut
- Steel Cap/Support Tube
- Continuous Epoxy Bond
- Max. Working Temperature 80°C
- Suitable for hydraulic/mineral oil
- Consult factory - for water application
- Flexible magnetic wrap available



| MODEL NO        | FLOW LPM | THREAD IN. BSPP A | OVERALL LENGTH B | DIA NUT CAP C | NUT A/F | SCREEN AREA (SQ. CMS) | WT KGS  | MAGNET WRAP |
|-----------------|----------|-------------------|------------------|---------------|---------|-----------------------|---------|-------------|
| <b>SS020-08</b> | 20       | 1 / 2             | 79               | 68            | 25      | 400                   | 0 . 2 0 | 1           |
| <b>SS030-12</b> | 30       | 3 / 4             | 91               | 68            | 36      | 438                   | 0 . 2 0 | 2           |
| <b>SS040-16</b> | 40       | 1                 | 137              | 68            | 41      | 710                   | 0 . 3 0 | 2           |
| <b>SS080-20</b> | 80       | 1 - 1 / 4         | 175              | 85            | 50      | 1045                  | 0 . 4 5 | 2           |
| <b>SS120-24</b> | 120      | 1 - 1 / 2         | 206              | 85            | 59      | 1451                  | 0 . 5 5 | 2           |
| <b>SS200-24</b> | 200      | 1 - 1 / 2         | 254              | 102           | 70      | 2193                  | 0 . 6 5 | 2           |
| <b>SS200-32</b> | 200      | 2                 | 254              | 102           | 70      | 2193                  | 0 . 8 0 | 2           |
| <b>SS300-40</b> | 300      | 2 - 1 / 2         | 259              | 131           | 85      | 2580                  | 1 . 0 5 | 3           |
| <b>SS400-48</b> | 400      | 3                 | 300              | 131           | 96      | 3225                  | 1 . 3 6 | 3           |