

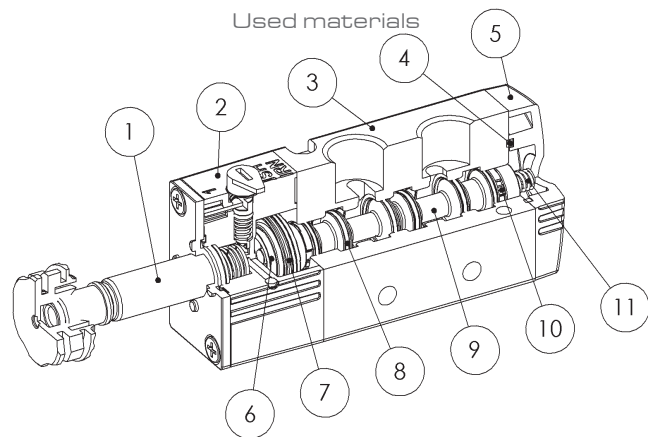
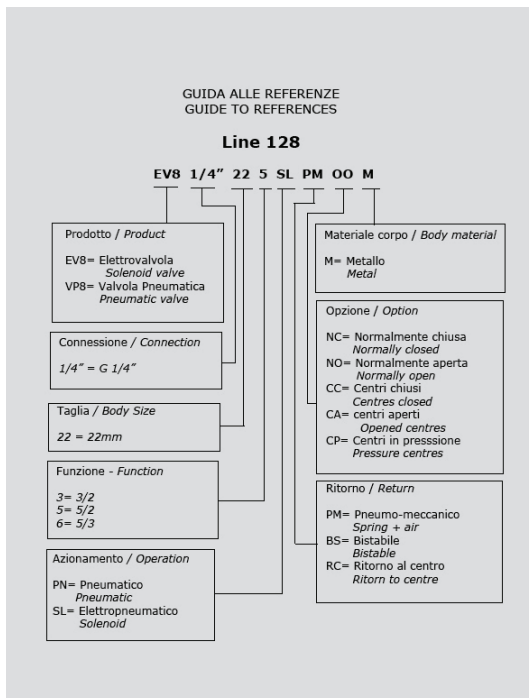
Pneumatic Valves

128 Series Pneumatic Valves



General features:

Construction: spool-type
 Body size: 22mm
 Body material: alluminium
 Single use: yes
 Manifold use: yes



Materiali impiegati

- ① OPERATOR: Brass, Stainless steel
 ② OPERATOR BODY: PA66+GF
 ③ BODY VALVE: Aluminium
 ④ END CAP GASKET: NBR
 ⑤ END CAP: PA66+GF
 ⑥ PISTON: POM
 ⑦ PISTON GASKET: NBR
 ⑧ SPOOL GASKET: NBR
 ⑨ SPOOL: Aluminium
 ⑩ RING: POM
 ⑪ SPRING: Stainless steel

Technical Data:

COSTRUZIONE	Spool valve
FLUID	Filtered air with or without lubrication
INSTALLATION	Single use through holes in the valve body / in battery with manifold
CONNECTION	1/4"
TEMPERATURE RANGE	-5 / +50°C
REFERENCE FLOW RATE	(P1=6 bar; delta P =1 bar)
	3/2 = 1.000 lt/min
	5/2 = 1.000 lt/min
	5/3= 650 lt/min (CC); 550 lt/min (CA); 500 lt/min (CP)

128 EV8 1/4"

Solenoid Valves

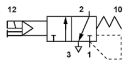


Technical data:

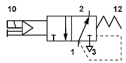
Working pressure: 1÷10 Bar (0,1÷1,00 MPa)
 Voltage: 24V DC, 24V AC, 110V AC, 220V AC
 Protection with connector: IP 65 EN 60529
 Manual override: Monostable/bistable
 Weight: 0,120 Kg
 COIL IS SUPPLIED SEPARATELY



Order Codes:



CODE **REF.**
 1282133001 EV8 1/4" 22 3 SL PM NC M



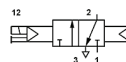
1282133002 EV8 1/4" 22 3 SL PM NO M

Technical data:

Working pressure: 1÷10 Bar (0,1÷1,00 MPa)
 Voltage: 24V DC, 24V AC, 110V AC, 220V AC
 Protection with connector: IP 65 EN 60529
 Manual override: Monostable/bistable
 Weight: 0,162 Kg
 COILS ARE SUPPLIED SEPARATELY

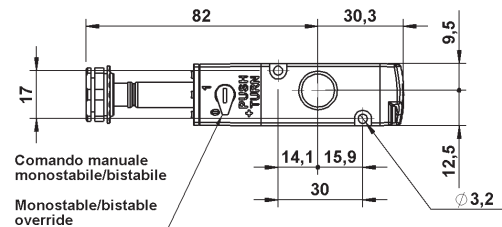
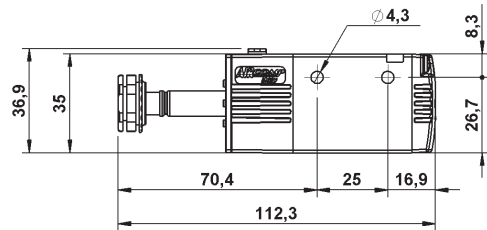
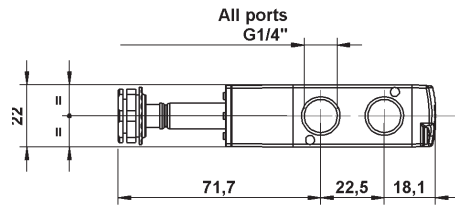


Order Codes:

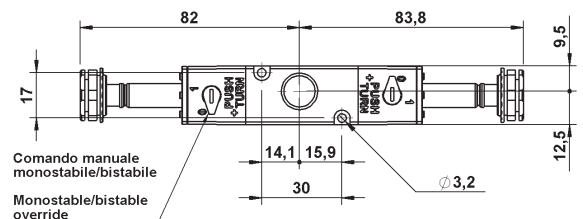
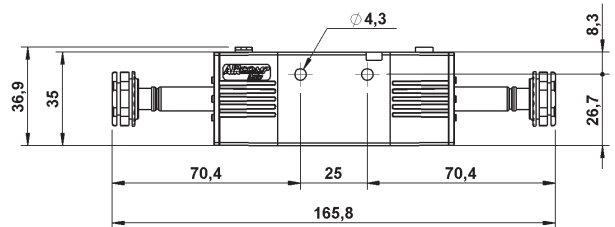
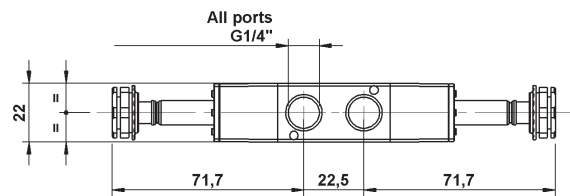


CODE **REF.**
 1282133003 EV8 1/8" 22 3 SL BS OO M

3/2 NC-NO Single solenoid valves



3/2 Double pneumatic pilot valves



128 EV8 1/4"

Solenoid Valves

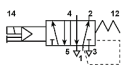


Technical data:

Working pressure: $1 \div 10$ Bar ($0,1 \div 1,00$ MPa)
 Voltage: 24V DC, 24V AC, 110V AC, 220V AC
 Protection with connector: IP 65 EN 60529
 Manual override: Monostable/bistable
 Weight: 0,130 Kg
 COIL IS SUPPLIED SEPARATELY

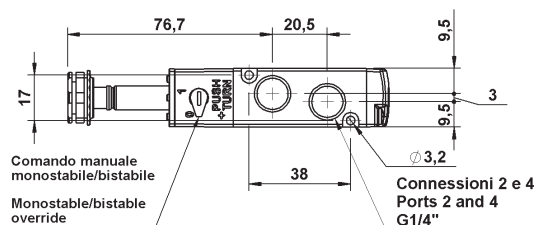
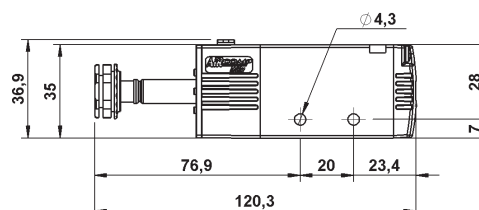
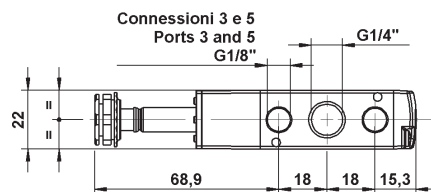


Order Codes:



CODE	REF.
1282135001	EV8 1/4" 22 3 SL PM OO M

5/2 Single solenoid valve

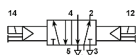


Technical data:

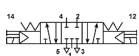
Working pressure (5/2): $1 \div 10$ Bar ($0,1 \div 1,00$ MPa)
 (5/3): $1,5 \div 10$ Bar ($0,15 \div 1,00$ MPa)
 Voltage: 24V DC, 24V AC, 110V AC, 220V AC
 Protection with connector: IP 65 EN 60529
 Manual override: Monostable/bistable
 Weight: 0,176 Kg
 COILS ARE SUPPLIED SEPARATELY



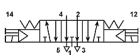
Order Codes:



CODE	REF.
1282135002	EV8 1/4" 22 5 SL BS OO M



1282136001	EV8 1/4" 22 6 SL RC CC M
------------	--------------------------

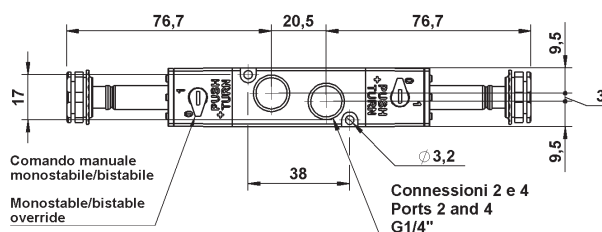
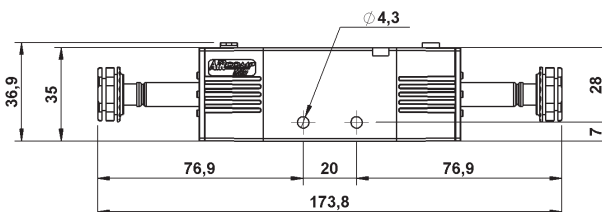
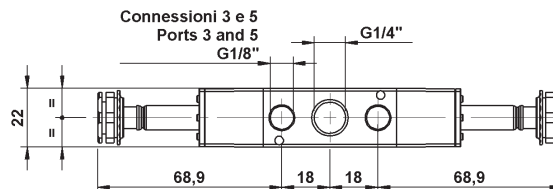


1282136002	EV8 1/4" 22 6 SL RC CA M
------------	--------------------------



1282136003	EV8 1/4" 22 6 SL RC CP M
------------	--------------------------

5/2 - 5/3 Double solenoid valves



128 EV8 1/4"

Pneumatically operated Valves



Technical data:

Working pressure: 1÷10 Bar (0,1÷1,00 MPa)

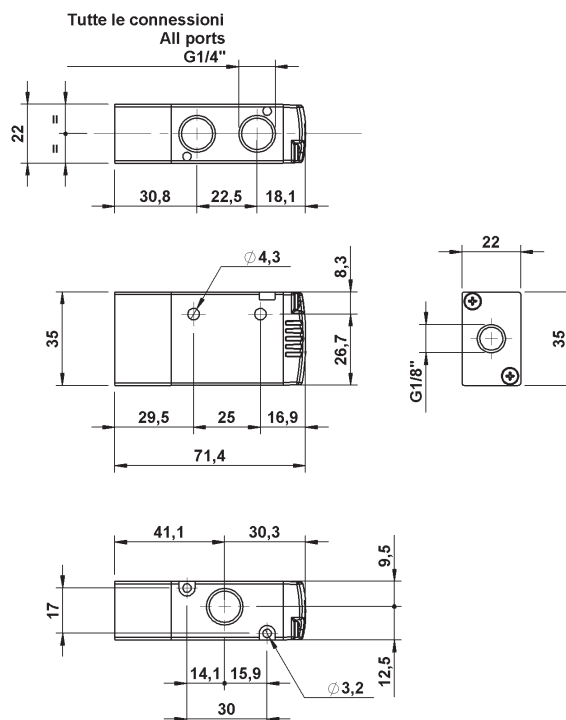
Pilot pressure at 1bar = 1 bar

Pilot pressure at 10bar = 4 bar

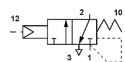
Weight: 0,113 Kg



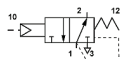
3/2 Single pneumatic pilot valves



Order Codes:



CODE **REF.**
1282233001 VP8 1/4" 22 3 PN PM NC M



1282233002 VP8 1/4" 22 3 PN PM NO M

Technical data:

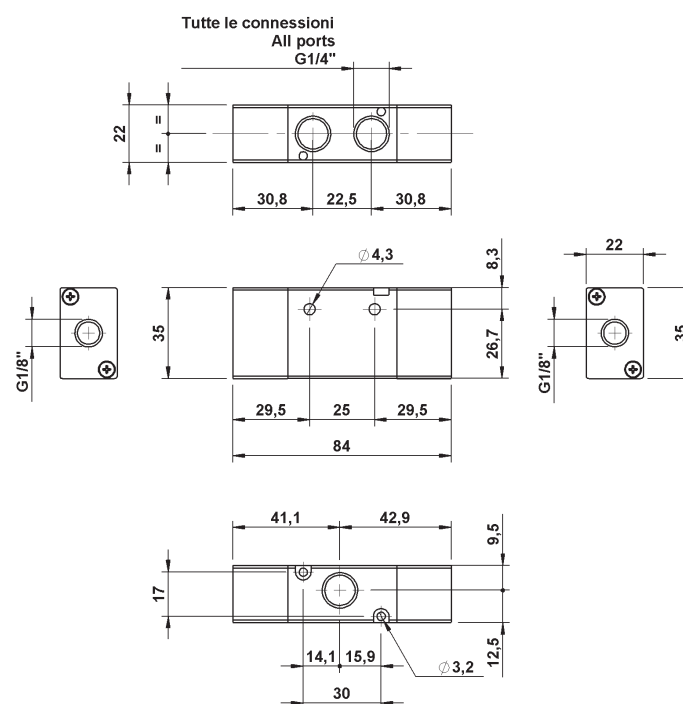
Working pressure: 1÷10 Bar (0,1÷1,00 MPa)

Operating pressure: 0,5÷10 Bar (0,10÷1,00 MPa)

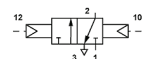
Weight: 0,144 Kg



3/2 Double pneumatic pilot valves



Order Codes:



CODE **REF.**
1282233003 VP8 1/4" 22 3 PN BS OO M

128 EV8 1/4"

Pneumatically operated Valves

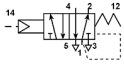


Technical data:

Working pressure: 1÷10 Bar (0,1÷1,00 MPa)
 Pilot pressure at 1bar = 1 bar
 Pilot pressure at 10bar = 4 bar
 Weight: 0,137 Kg

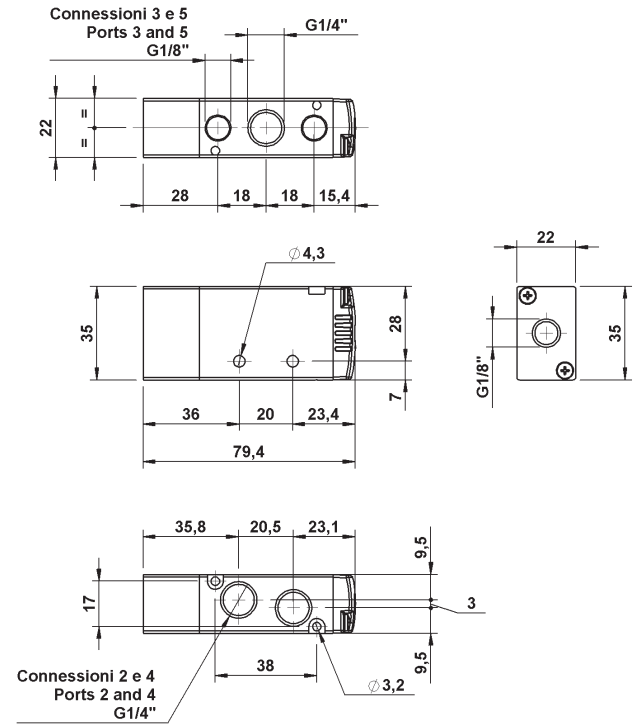


Order Codes:



CODE	REF.
1282235001	VP8 1/4" 22 3 PN PM NC M

5/2 Single pneumatic

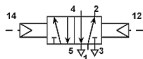


Technical data:

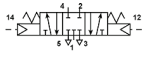
Working pressure: 1÷10 Bar (0,1÷1,00 MPa)
 Pilot pressure (5/2): 1÷10 Bar (0,1÷1,00 MPa)
 (5/3): 1,5÷10 Bar (0,15÷1,00 MPa)
 Weight: 0,161 Kg



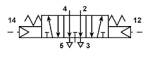
Order Codes:



CODE	REF.
1282235002	VP8 1/8" 22 5 PN BS OO M



CODE	REF.
1282236001	VP8 1/8" 22 6 PN RC CC M

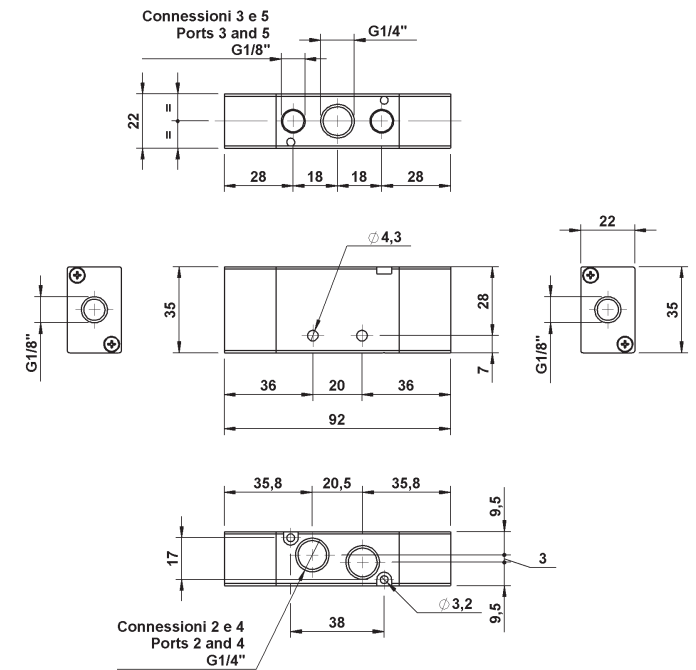


CODE	REF.
1282236002	VP8 1/8" 22 6 PN RC CA M



CODE	REF.
1282236003	VP8 1/8" 22 6 PN RC CP M

5/2-5/3 Double pneumatic pilot valves



128 1/4"

1/4" Valves manifold



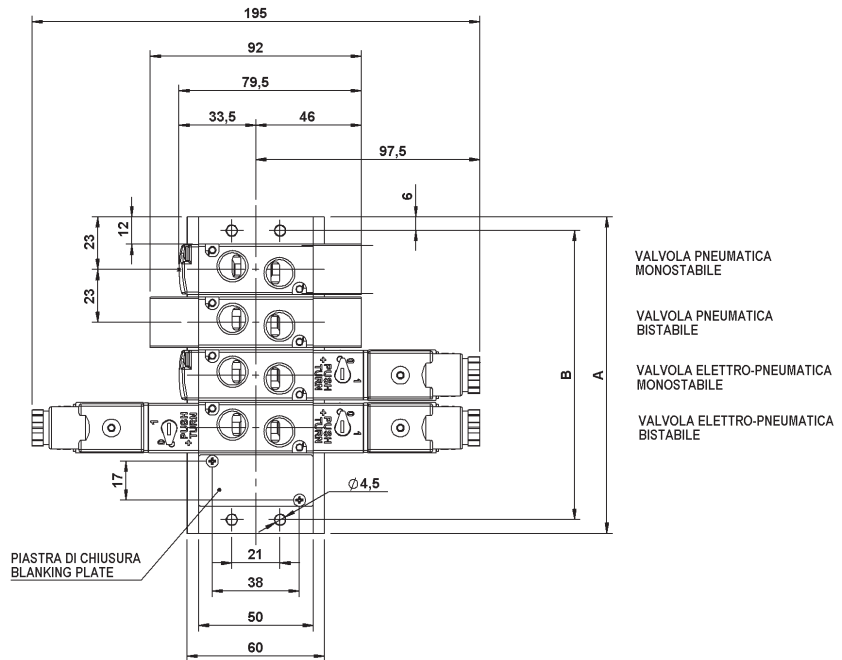
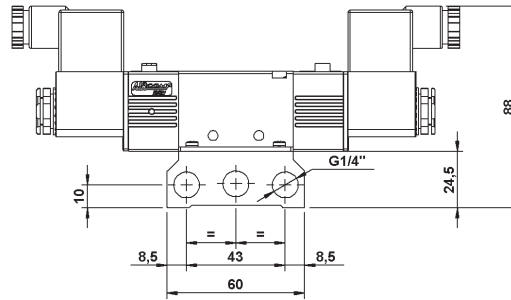
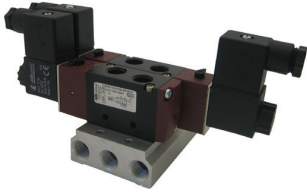
Technical data:

Working pressure: 1÷10 Bar (0,1÷1,00 MPa)

Pilot pressure at 1bar = 1 bar

Pilot pressure at 10bar = 4 bar

Weight: 0,137 Kg



Dimensions

N° of stations	A	B
2	69	57
3	92	80
4	115	103
5	138	126
6	161	149
7	184	172
8	207	195
9	230	218
10	253	241

Manifold:



CODICE-CODE	REF.	LINE
1325A00002	STB 22 2 POS BSP	125-127-128
1325A00003	STB 22 3 POS BSP	125-127-128
1325A00004	STB 22 4 POS BSP	125-127-128
1325A00005	STB 22 5 POS BSP	125-127-128
1325A00006	STB 22 6 POS BSP	125-127-128
1325A00007	STB 22 7 POS BSP	125-127-128
1325A00008	STB 22 8 POS BSP	125-127-128
1325A00009	STB 22 9 POS BSP	125-127-128
1325A00010	STB 22 10 POS SBP	125-127-128

Blanking Plate Kit



CODICE-CODE	REF.	LINE
1325A00013	KIT PIASTRA DI CHIUSURA BLANKING PLATE	125-127

Technical data:

Voltage: 24V DC, 24V AC, 110V AC, 220V AC

Voltage tolerance: $\pm 10\%$

Power consumption: AC=5VA DC=3, OW

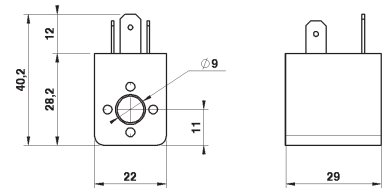
Duty cycle: ED 100%

Protection with connector: IP 65 EN 60529

22mm Coil



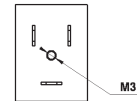
CODICE-CODE	REF.	LINE
A50.26.00018	BOBINA (COIL) DC12V	120-125-127-128-130
A50.26.00006	BOBINA (COIL) DC24V	120-125-127-128-130
A50.26.00007	BOBINA (COIL) AC24V 50/60HZ	120-125-127-128-130
A50.26.00008	BOBINA (COIL) AC110V 50/60HZ	120-125-127-128-130
A50.26.00009	BOBINA (COIL) AC220V 50/60HZ	120-125-127-128-130



22mm Coil with "UL" certification



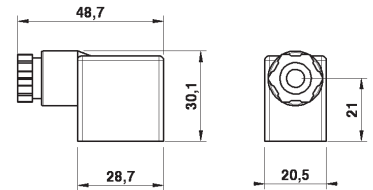
CODICE-CODE	REF.	LINE
A50.26.00048	BOBINA "UL" (COIL) DC24V (DC12V)	120-125-127-128-130
A50.26.00049	BOBINA "UL" (COIL) AC24V (DC12V)	120-125-127-128-130
A50.26.00050	BOBINA "UL" (COIL) AC110V	120-125-127-128-130
A50.26.00051	BOBINA "UL" (COIL) AC220V	120-125-127-128-130



Connector



CODICE-CODE	REF.	LINE
*A50.26.00010	CONNECTOR SP:22mm	120-125-127-128-130

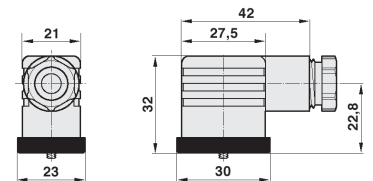


* Il connettore standard è conforme alla certificazione "UL"

22mm LED connectors



CODICE-CODE	REF.	LINE
A50.26.00026	CONNETTORE LUMINOSO 22mm 24V 22mm LED CONNECTOR 24V	120-125-127-128-130
A50.26.00027	CONNETTORE LUMINOSO 22mm 115V 22mm LED CONNECTOR 115V	120-125-127-128-130
A50.26.00028	CONNETTORE LUMINOSO 22mm 230V 22mm LED CONNECTOR 230V	120-125-127-128-130



22mm Cabled LED connectors



CODICE-CODE	REF.	LENGHT	LINE
A50.26.00029	CONNETTORE CABLATO 22mm 24V 22mm CABLED CONNECTOR 24V	3mt	120-125-127-128-130
A50.26.00027	CONNETTORE CABLATO 22mm 115V 22mm CABLED CONNECTOR 115V	3mt	120-125-127-128-130
A50.26.00028	CONNETTORE CABLATO 22mm 230V 22mm CABLED CONNECTOR 230V	3mt	120-125-127-128-130

