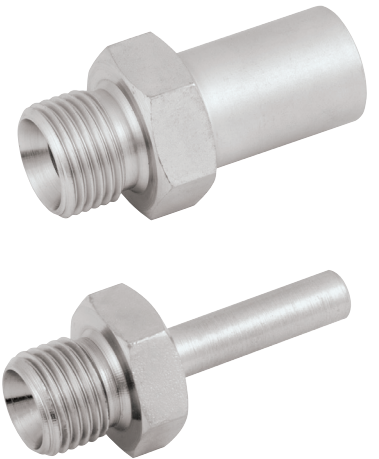
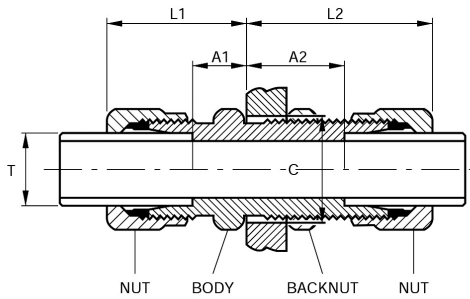
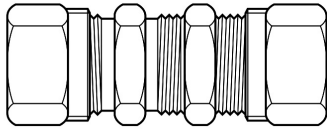


# Hydraulic Imperial Compression Fittings



## O.D. TUBES

Part No.	Tube Dia. T.	Hexagons A/F		Tube Abutment		Overall Length		Clearance Hole dia. C.
		Nut	Body & Backnut	A1.	A2.	L1.	L2.	
2018-8462	¼"	.710"	.820"	⅝"	⅔"	1"	1⅝"	⅝"
-								
2018-8488	⅜"	.820"	.920"	⅜"	1"	1⅜"	1⅔"	1⅛"
2018-8496	½"	.920"	1.10"	⅜"	1⅜"	1⅝"	1⅔"	1⅜"
2018-8504	⅝"	1.10"	1.20"	⅜"	1"	1⅝"	1⅔"	1⅝"
2018-8512	¾"	1.20"	1.375"	⅞"	1⅜"	1⅜"	1⅞"	1⅛"