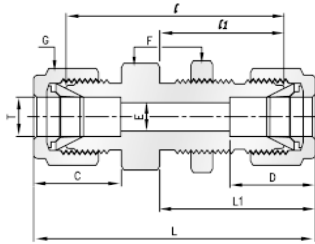


Brass Twin Ferrule Imperial Tube Fitting



Bulkhead Union, Tube x Tube



Part No.	Tube O.D T in	E Min	F	G	D	C	I	L	L1	Panel Hole drill Size	Max Panel Thickness
BU-125-B	1/8	2.28	1/2	7/16	12.70	15.24	38.10	51.30	31.24	8.33	12.70
BU-250-B	1/4	4.82	5/8	9/16	15.24	17.78	42.92	57.65	11.50	11.50	10.16
BU-375-B	3/8	7.11	3/4	11/16	16.76	19.30	47.49	62.23	14.65	14.65	11.17
BU-500-B	1/2	10.41	15/16	7/8	22.86	21.84	47.49	71.12	19.44	19.44	12.70
BU-750-B	3/4	15.74	1-3/16	1-1/8	24.38	21.84	52.32	78.99	25.79	25.79	16.76
BU-1000-B	1	22.35	1-5/8	1-1/2	31.24	26.41	64.26	95.75	33.73	33.73	19.05