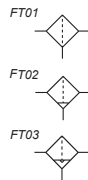


Series MX Filters



Connections: MX2=3/8, 1/2, 3/4 MX3=3/4, 1
 Modular
 Bowl with technopolymer cover and bayonet-type mounting



CODING EXAMPLE

MX	2	-	3/8	-	F	0	0	-	LH
MX	SERIES: MX				F	F = filter			
2	SIZE: 2 = 3/8 - 1/2 - 3/4 3 = 3/4 - 1				0	FILTERING ELEMENT: 0 = 25µm (standard) 1 = 5µm			
3/8	CONNECTIONS: 3/8, 1/2, 3/4, 1				0	DRAINING OF CONDENSATE: 0 = semi-automatic manual drain (standard) 3 = automatic drain 5 = depressuring drain, protected 8 = without drain with connection 1/8			
					LH	FLOW DIRECTION: = from left to right (standard) LH = from right to left			

- ✓ Ex Stock
- ✎ UK Assembly
- ⊙ Please Call Sales Office

	Availability	Symbol	MX2			MX3	
			3/8	1/2	3/4	3/4	1
25 micron							
Semi Auto Drain	✓	FT02	MX2-3/8-F00	MX2-1/2-F00	MX2-3/4-F00	MX3-3/4-F00	MX3-1-F00
Automatic Drain	✓	FT03	MX2-3/8-F03	MX2-1/2-F03	MX2-3/4-F03	MX3-3/4-F03	MX3-1-F03
Depressurisation Drain Protected	⊙	FT03	MX2-3/8-F05	MX2-1/2-F05	MX2-3/4-F05	MX3-3/4-F05	MX3-1-F05
Connection 1/8	⊙	FT01	MX2-3/8-F08	MX2-1/2-F08	MX2-3/4-F08	MX3-3/4-F08	MX3-1-F08
5 micron							
Semi Auto Drain	✓	FT02	MX2-3/8-F10	MX2-1/2-F10	MX2-3/4-F10	MX3-3/4-F10	MX3-1-F10
Automatic Drain	✓	FT03	MX2-3/8-F13	MX2-1/2-F13	MX2-3/4-F13	MX3-3/4-F13	MX3-1-F13
Depressurisation Drain Protected	⊙	FT03	MX2-3/8-F15	MX2-1/2-F15	MX2-3/4-F15	MX3-3/4-F15	MX3-1-F15
Connection 1/8	⊙	FT01	MX2-3/8-F18	MX2-1/2-F18	MX2-3/4-F18	MX3-3/4-F18	MX3-1-F18
Accessories			3/8	1/2	3/4	3/4	
			S6510 10-3/8	S6510 12-1/2	S6510 16-3/4	S6510 16-3/4	
			S6520 10-3/8	S6520 12-1/2	-	-	

Series MX Activated Carbon Filters

Connections: MX2=3/8, 1/2, 3/4 MX3=3/4, 1

Modular

Bowl with technopolymer cover and bayonet-type mounting





CODING EXAMPLE

MX	2	-	3/8	-	FCA	-	LH
-----------	----------	----------	------------	----------	------------	----------	-----------

MX	SERIES: MX	
2	SIZE: 2 = 3/8 - 1/2 - 3/4 3 = 3/4 - 1	FCA Activated carbon filter
3/8	CONNECTIONS: 3/8, 1/2, 3/4, 1	LH FLOW DIRECTION: = from left to right (standard) LH = from right to left

- ✓ Ex Stock
- ✎ UK Assembly
- 📞 Please Call Sales Office

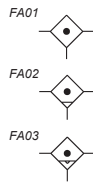
Availability	MX2			MX3	
	3/8	1/2	3/4	3/4	1
Activated Carbon Filters					
	📞 MX2-3/8-FCA	MX2-1/2-FCA	MX2-3/4-FCA	MX3-3/4-FCA	MX3-1-FCA
Accessories	3/8	1/2	3/4	3/4	
	S6510 10-3/8	S6510 12-1/2	S6510 16-3/4	S6510 16-3/4	
	S6520 10-3/8	S6520 12-1/2	-	-	

Series MX Coalescing Filters

Connections: MX2=3/8, 1/2, 3/4 MX3=3/4, 1

Modular

Bowl with technopolymer cover and bayonet-type mounting



- ✓ Ex Stock
- ✎ UK Assembly
- ⌚ Please Call Sales Office

CODING EXAMPLE

MX 2 - 3/8 - FC 0 0 - LH

MX	SERIES: MX	FC	FC = coalescing filter
2	SIZE: 2 = 3/8 - 1/2 - 3/4 3 = 3/4 - 1	0	FILTERING ELEMENT: 0 = 0.01µm (standard) 1 = 1µm
3/8	CONNECTIONS: 3/8, 1/2, 3/4, 1	0	DRAINING OF CONDENSATE: 0 = semi-automatic manual drain (standard) 3 = automatic drain 5 = depressuring drain, protected 8 = no drain with connection 1/8 see page 235
		LH	FLOW DIRECTION: = from left to right (standard) LH = from right to left

	Availability	Symbol	3/8	MX2 1/2	3/4	MX3 3/4	1
0.01 micron							
Semi Auto Drain	⌚	FA02	MX2-3/8-FC00	MX2-1/2-FC00	MX2-3/4-FC00	MX3-3/4-FC00	MX3-1-FC00
Automatic Drain	⌚	FA03	MX2-3/8-FC03	MX2-1/2-FC03	MX2-3/4-FC03	MX3-3/4-FC03	MX3-1-FC03
Depressurisation Drain Protected	⌚	FA03	MX2-3/8-FC05	MX2-1/2-FC05	MX2-3/4-FC05	MX3-3/4-FC05	MX3-1-FC05
Connection 1/8	⌚	FA01	MX2-3/8-FC08	MX2-1/2-FC08	MX2-3/4-FC08	MX3-3/4-FC08	MX3-1-FC08
1 micron							
Semi Auto Drain	⌚	FA02	MX2-3/8-FC10	MX2-1/2-FC10	MX2-3/4-FC10	MX3-3/4-FC10	MX3-1-FC10
Automatic Drain	⌚	FA03	MX2-3/8-FC13	MX2-1/2-FC13	MX2-3/4-FC13	MX3-3/4-FC13	MX3-1-FC13
Depressurisation Drain Protected	⌚	FA03	MX2-3/8-FC15	MX2-1/2-FC15	MX2-3/4-FC15	MX3-3/4-FC15	MX3-1-FC15
Connection 1/8	⌚	FA01	MX2-3/8-FC18	MX2-1/2-FC18	MX2-3/4-FC18	MX3-3/4-FC18	MX3-1-FC18
Accessories							
			3/8	1/2	3/4	3/4	
		S6510	10-3/8	S6510 12-1/2	S6510 16-3/4	S6510 16-3/4	
		S6520	10-3/8	S6520 12-1/2	-	-	

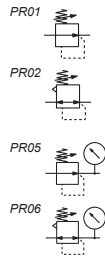
Please see page 206 for additional Series MX accessories

Series MX Pressure Regulators

Connections: MX2=3/8, 1/2, 3/4, MX3=3/4, 1

Manifold Connections: 1/2 (MX2 only)





Modular - Available with built-in pressure gauge or connections for external gauge (1/4 connection for MX3, 1/8 connection for MX2)



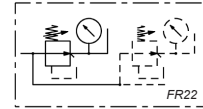
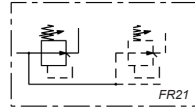
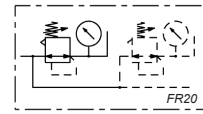
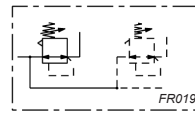
- ✓ Ex Stock
- ✂ UK Assembly
- ☎ Please Call Sales Office

CODING EXAMPLE





MX	2	-	3/8	-	R	0	0	4	-	LH	
MX	SERIES: MX					0	OPERATING PRESSURE: 0 = 0.5 - 10 bar (standard) 4 = 0 - 4 bar 7 = 0.5 - 7 bar (MX2 only)				
2	SIZE: 2 = 3/8 - 1/2 - 3/4 3 = 3/4 - 1										
3/8	CONNECTIONS: 3/8, 1/2, 3/4, 1					0	DESIGN TYPE: 0 = relieving (standard) 1 = without relieving				
R	TYPE OF REGULATOR: R = pressure regulator M = manifold pressure regulator (MX2 1/2 only)					4	PRESSURE GAUGE: 0 = without pressure gauge (with threaded connection for gauges) 2 = with built-in pressure gauge 0-6 and working pressure 0 - 4 bar 3 = with built-in pressure gauge 0-10 and working pressure 0 - 7 bar (MX2 only) 4 = with built-in pressure gauge 0-12 and working pressure 0.5 - 10 bar (standard)				
						LH	FLOW DIRECTION: = from left to right (standard) LH = from right to left				

Availability	Symbol	MX2			MX3	
		3/8	1/2	3/4	3/4	1
With Port for Pressure Gauge						
0.5 - 10 Bar, Relieving ✓	PR02	MX2-3/8-R000	MX2-1/2-R000	MX2-3/4-R000	MX3-3/4-R000	MX3-1-R000
0 - 4 Bar, Relieving ☎	PR02	MX2-3/8-R400	MX2-1/2-R400	MX2-3/4-R400	MX3-3/4-R400	MX3-1-R400
0 - 7 Bar, Relieving (MX2 only) ☎	PR02	MX2-3/8-R700	MX2-1/2-R700	MX2-3/4-R700	-	-
0.5 - 10 Bar, Non-Relieving ☎	PR01	MX2-3/8-R010	MX2-1/2-R010	MX2-3/4-R010	MX3-3/4-R010	MX3-1-R010
0 - 4 Bar, Non-Relieving ☎	PR01	MX2-3/8-R410	MX2-1/2-R410	MX2-3/4-R410	MX3-3/4-R410	MX3-1-R410
0 - 7 Bar, Non-Relieving (MX2 only) ☎	PR01	MX2-3/8-R710	MX2-1/2-R710	MX2-3/4-R710	-	-
With Built-in Pressure Gauge						
0.5 - 10 Bar, Relieving ✓	PR06	MX2-3/8-R004	MX2-1/2-R004	MX2-3/4-R004	MX3-3/4-R004	MX3-1-R004
0 - 4 Bar, Relieving ☎	PR06	MX2-3/8-R402	MX2-1/2-R402	MX2-3/4-R402	MX3-3/4-R402	MX3-1-R402
0 - 7 Bar, Relieving (MX2 only) ☎	PR06	MX2-3/8-R703	MX2-1/2-R703	MX2-3/4-R703	-	-
0.5 - 10 Bar, Non-Relieving ☎	PR05	MX2-3/8-R014	MX2-1/2-R014	MX2-3/4-R014	MX3-3/4-R014	MX3-1-R014
0 - 4 Bar, Non-Relieving ☎	PR05	MX2-3/8-R412	MX2-1/2-R412	MX2-3/4-R412	MX3-3/4-R412	MX3-1-R412
0 - 7 Bar, Non-Relieving (MX2 only) ☎	PR05	MX2-3/8-R713	MX2-1/2-R713	MX2-3/4-R713	-	-
Accessories		3/8	1/2	3/4	3/4	1
		S6510 10-3/8	S6510 12-1/2	S6510 16-3/4	S6510 16-3/4	
		S6520 10-3/8	S6520 12-1/2	-	-	
		MX2-S	MX2-S	MX2-S	MX3-S	MX3-S
		M053-P12	M053-P12	M053-P12	M063-P12	M063-P12

Series MX Manifold Pressure Regulators



- ✓ Ex Stock
- ✎ UK Assembly
- Ⓞ Please Call Sales Office

		MX2 1/2	
Availability	Symbol		
With Port for Pressure Gauge			
0.5 - 10 Bar, Relieving ✓	FR19	MX2-1/2-M000	
0 - 4 Bar, Relieving Ⓞ	FR19	MX2-1/2-M400	
0 - 7 Bar, Relieving Ⓞ	FR19	MX2-1/2-M700	
0.5 - 10 Bar, Non-Relieving Ⓞ	FR21	MX2-1/2-M010	
0 - 4 Bar, Non-Relieving Ⓞ	FR21	MX2-1/2-M410	
0 - 7 Bar, Non-Relieving Ⓞ	FR21	MX2-1/2-M710	
With Built-in Pressure Gauge			
0.5 - 10 Bar, Relieving Ⓞ	FR20	MX2-1/2-M004	
0 - 4 Bar, Relieving Ⓞ	FR20	MX2-1/2-M402	
0 - 7 Bar, Relieving Ⓞ	FR20	MX2-1/2-M703	
0.5 - 10 Bar, Non-Relieving Ⓞ	FR22	MX2-1/2-M014	
0 - 4 Bar, Non-Relieving Ⓞ	FR22	MX2-1/2-M412	
0 - 7 Bar, Non-Relieving Ⓞ	FR22	MX2-1/2-M713	
Accessories		1/2	
		S6510 12-1/2	
		S6520 12-1/2	
		MX2-S	
		M053-P12	


Please see page 206 for additional Series MX accessories

Series MX Lubricators

Connections: MX2=3/8, 1/2, 3/4 MX3=3/4, 1
Modular

Note: Lubrication Oil also available

Bowl with technopolymer cover and bayonet-type mounting

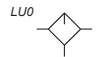


✓ Ex Stock
 ✎ UK Assembly
 ☎ Please Call Sales Office

CODING EXAMPLE

MX	2	-	3/8	-	L	00	-	LH
-----------	----------	----------	------------	----------	----------	-----------	----------	-----------

MX SERIES: MX	
2 SIZE: 2 = 3/8 - 1/2 - 3/4 3 = 3/4 - 1	00 DESIGN TYPE: 00 = atomized oil
3/8 CONNECTIONS: 3/8, 1/2, 3/4, 1	LH FLOW DIRECTION: = from left to right (standard) LH = from right to left
L L = lubricator	




Availability	MX2			MX3	
Connection	3/8	1/2	3/4	3/4	1
Part Number	✓ MX2-3/8-L00	MX2-1/2-L00	MX2-3/4-L00	MX3-3/4-L00	MX3-1-L00

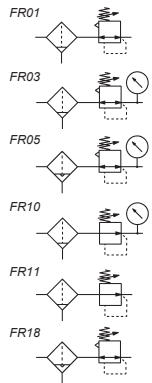
Please see page 206 for Series MX Accessories

Series MX Filter/Regulators

Connections: MX2=3/8, 1/2, 3/4 MX3=3/4, 1
Modular

Bowl with technopolymer cover and bayonet-type mounting





N.B. 5 Micron, depressurisation drain and connection 1/8 also available on request. See coding table above.
 Please see page 206 for Series MX Accessories





CODING EXAMPLE

MX	2	-	3/8	-	FR	0	0	0	4	-	LH
-----------	----------	----------	------------	----------	-----------	----------	----------	----------	----------	----------	-----------

MX SERIES: MX		0 FILTERING ELEMENT WITH DESIGN TYPE: 0 = 25µm with relieving (standard) 1 = 5µm with relieving 2 = 25µm without relieving 3 = 5µm without relieving
2 SIZE: 2 = 3/8 - 1/2 - 3/4 3 = 3/4 - 1	0 DRAINING OF CONDENSATE: 0 = semi-automatic manual drain (standard) 3 = automatic drain 5 = depressuring drain, protected 8 = no drain with connection 1/8	
3/8 CONNECTIONS: 3/8, 1/2, 3/4, 1	0 OPERATING PRESSURE: 0 = 0.5 - 10 bar (standard) 4 = 0 - 4 bar 7 = 0.5 - 7 bar (MX2 only)	
FR FR = filter regulator	4 PRESSURE GAUGE: 0 = without pressure gauge 2 = with built-in pressure gauge 0-6 and working pressure 0-4 bar 3 = with built-in pressure gauge 0-10 and working pressure 0-7 bar (MX2 only) 4 = with built-in pressure gauge 0-12 and working pressure 0.5 - 10 bar (standard)	
	LH FLOW DIRECTION: = from left to right (standard) LH = from right to left	

Series MX Filter/Regulator

- ✓ Ex Stock
- 🇬🇧 UK Assembly
- ☎ Please Call Sales Office

Availability	Symbol	3/8	MX2		3/4	MX3	
			1/2			3/4	1
Semi Auto Drain - Self Relieving							
25 Micron 0.5 - 10 Bar	✓	FR01	MX2-3/8-FR0000	MX2-1/2-FR0000	MX2-3/4-FR0000	MX3-3/4-FR0000	MX3-1-FR0000
25 Micron 0 - 4 Bar	☎	FR01	MX2-3/8-FR0040	MX2-1/2-FR0040	MX2-3/4-FR0040	MX3-3/4-FR0040	MX3-1-FR0040
25 Micron 0.5 - 10 Bar (MX2 only)	☎	FR01	MX2-3/8-FR0070	MX2-1/2-FR0070	MX2-3/4-FR0070	-	-
Semi Auto Drain - Non-Relieving							
25 Micron 0.5 - 10 Bar	✓	FR011	MX2-3/8-FR2000	MX2-1/2-FR2000	MX2-3/4-FR0000	MX3-3/4-FR2000	MX3-1-FR2000
25 Micron 0 - 4 Bar	☎	FR011	MX2-3/8-FR2040	MX2-1/2-FR2040	MX2-3/4-FR0040	MX3-3/4-FR2040	MX3-1-FR2040
25 Micron 0 - 7 Bar (MX2 only)	☎	FR011	MX2-3/8-FR2070	MX2-1/2-FR2070	MX2-3/4-FR0070	-	-
Automatic Drain - Self Relieving							
25 Micron 0.5 - 10 Bar	✓	FR018	MX2-3/8-FR0300	MX2-1/2-FR0300	MX2-3/4-FR0300	MX3-3/4-FR0300	MX3-1-FR0300
25 Micron 0 - 4 Bar	☎	FR018	MX2-3/8-FR0340	MX2-1/2-FR0340	MX2-3/4-FR0340	MX3-3/4-FR0340	MX3-1-FR0340
25 Micron 0 - 7 Bar (MX2 only)	☎	FR018	MX2-3/8-FR0370	MX2-1/2-FR0370	MX2-3/4-FR0370	-	-
Semi Auto Drain - Self Relieving							
25 Micron 0.5 - 10 Bar	✓	FR03	MX2-3/8-FR0004	MX2-1/2-FR0004	MX2-3/4-FR0004	MX3-3/4-FR0004	MX3-1-FR0004
25 Micron 0 - 4 Bar	☎	FR03	MX2-3/8-FR0042	MX2-1/2-FR0042	MX2-3/4-FR0042	MX3-3/4-FR0042	MX3-1-FR0042
25 Micron 0.5 - 10 Bar (MX2 only)	☎	FR03	MX2-3/8-FR0073	MX2-1/2-FR0073	MX2-3/4-FR0073	-	-
Semi Auto Drain - Non-Relieving							
25 Micron 0.5 - 10 Bar	☎	FR10	MX2-3/8-FR2004	MX2-1/2-FR2004	MX2-3/4-FR2004	MX3-3/4-FR2004	MX3-1-FR2004
25 Micron 0 - 4 Bar	☎	FR10	MX2-3/8-FR2042	MX2-1/2-FR2042	MX2-3/4-FR2042	MX3-3/4-FR2042	MX3-1-FR2042
25 Micron 0 - 7 Bar (MX2 only)	☎	FR10	MX2-3/8-FR2073	MX2-1/2-FR2073	MX2-3/4-FR2073	-	-
Automatic Drain - Self Relieving							
25 Micron 0.5 - 10 Bar	✓	FR05	MX2-3/8-FR0304	MX2-1/2-FR0304	MX2-3/4-FR0304	MX3-3/4-FR0304	MX3-1-FR0304
25 Micron 0 - 4 Bar	☎	FR05	MX2-3/8-FR0342	MX2-1/2-FR0342	MX2-3/4-FR0342	MX3-3/4-FR0342	MX3-1-FR0342
25 Micron 0 - 7 Bar (MX2 only)	☎	FR05	MX2-3/8-FR0373	MX2-1/2-FR0373	MX2-3/4-FR0373	-	-
Accessories							
		3/8	1/2	3/4	3/4		
		S6510 10-3/8	S6510 12-1/2	S6510 16-3/4	S6510 16-3/4		
		S6520 10-3/8	S6520 12-1/2	-	-		
		MX2-S	MX2-S	MX2-S	MX3-S	MX3-S	
		M053-P12	M053-P12	M053-P12	M063-P12	M063-P12	


Please see page 206 for additional Series MX accessories

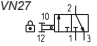
Series MX Lockable Isolation 3/2-Way Valves

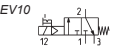
Connections: MX2=3/8, 1/2, 3/4 MX3=3/4, 1


Modular


Manual, electro-pneumatic, servo-pilot and pneumatic control



VN27 

EV10 

EV53 

YES1 

CODING EXAMPLE




MX	2	-	3/8	-	V	01	-	LH
-----------	----------	----------	------------	----------	----------	-----------	----------	-----------

MX SERIES: MX	V V = 3/2 way valve
2 SIZE: 2 = 3/8 - 1/2 - 3/4 3 = 3/4 - 1	01 DESIGN TYPE: 01 = lockable manual control 16 = electro-pneumatic control 17 = servo-pilot control 36 = pneumatic control
3/8 CONNECTIONS: 3/8, 1/2, 3/4, 1	LH FLOW DIRECTION: = from left to right (standard) LH = from right to left

✓ Ex Stock

✍ UK Assembly

☎ Please Call Sales Office


	MX2			MX3			
	Availability	Symbol	3/8	1/2	3/4	3/4	1
Lockable Manual Control	✓	VN27	MX2-3/8-V01	MX2-1/2-V01	MX2-3/4-V01	MX3-3/4-V01	MX3-1-V01
Electro-Pneumatic Control	✓	EV10	MX2-3/8-V16	MX2-1/2-V16	MX2-3/4-V16	MX3-3/4-V16	MX3-1-V16
Servo-Pilot Control	✓	EV53	MX2-3/8-V17	MX2-1/2-V17	MX2-3/4-V17	MX3-3/4-V17	MX3-1-V17
Pneumatic Control	✓	YES1	MX2-3/8-V36	MX2-1/2-V36	MX2-3/4-V36	MX3-3/4-V36	MX3-1-V36
Accessories							
			3/8	1/2	3/4	3/4	
			S6510 10-3/8	S6510 12-1/2	S6510 16-3/4	S6510 16-3/4	
			S6520 10-3/8	S6520 12-1/2	-	-	
	Note: Required for Electro-Pneumatic Control Only		U7*	U7*	U7*	U7*	U7*
Please see page 129 for voltage options							

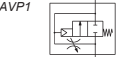
Please see page 206 for additional Series MX accessories

Series MX Soft Start Valves

Connections: MX2=3/8, 1/2, 3/4 MX3=3/4, 1

Modular



AVP1 

CODING EXAMPLE

MX	2	-	3/8	-	AV	-	LH
-----------	----------	----------	------------	----------	-----------	----------	-----------

MX SERIES: MX	AV AV = soft start valve
2 SIZE: 2 = 3/8 - 1/2 - 3/4 3 = 3/4 - 1	LH FLOW DIRECTION: = from left to right (standard) LH = from right to left
3/8 CONNECTIONS: 3/8, 1/2, 3/4, 1	

✓ Ex Stock

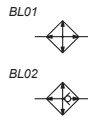
✍ UK Assembly

☎ Please Call Sales Office

	MX2			MX3		
	Availability	3/8	1/2	3/4	3/4	1
Soft Start Valve	✓	MX2-3/8-AV	MX2-1/2-AV	MX2-3/4-AV	MX3-3/4-AV	MX3-1-AV

Series MX Take-off Blocks

Connections: MX2=1/2 MX3=1
Modular



- ✓ Ex Stock
- ✎ UK Assembly
- ☎ Please Call Sales Office

CODING EXAMPLE

MX 2 - 1/2 - B 00 - LH

MX	SERIES: MX	
2	SIZE: 2 = 1/2 3 = 1	00 DESIGN TYPE: 00 = without no return valve (standard) 01 = with no return valve 02 = without no return valve, with double O-ring seat
1/2	CONNECTIONS: 1/2, 1	LH FLOW DIRECTION: = from left to right (standard) LH = from right to left
B	= Take-off block	

	Availability	Symbol	MX2	MX3
Take-off Blocks			1/2	1
Without no return valve	✓	BL01	MX2-1/2-B00	MX3-1-B00
With no return valve	✓	BL02	MX2-1/2-B01	MX3-1-B01

Please see page 206 for Series MX Accessories

FRL Series MX Assembled

Connections MX2=3/8, 1/2, 3/4 MX3=3/4, 1
Assembly through rapid clamps



The FRL Series MX can be easily assembled through rapid clamps which allow the connection among single components creating an unlimited number of compositions.
The FRL groups Series MX are also available in the already mounted version (with a single code).

Please see page 206 for additional Series MX accessories

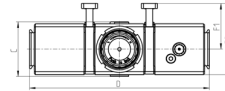
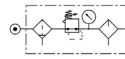
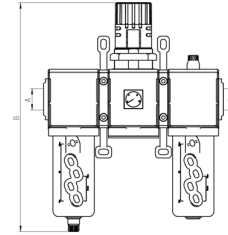
CODING EXAMPLE

MX 2 - 3/8 - 000014 - LH

MX	SERIES: MX	
2	SIZE: 2 = 3/8 - 1/2 - 3/4 3 = 3/4 - 1	000014 GROUP COMPOSITION (WITH BUILT IN PRESSURE GAUGE): 000014 = F00 + R004 + L00 000015 = FR0004 + L00 000016 = V01 + FR0004 + L00 000017 = V01 + FR0004 000018 = FR0004 + V16 + AV 000019 = FR0004 + L00 + V16 + AV 000020 = V01 + FR0004 + V16 + AV 000021 = V01 + FR0004 + L00 + V16 + AV + PRESS. NO 000022 = V01 + FR0004 + L00 + V16 + AV + PRESS. NC 000023 = V01 + FR0004 + V16 + AV + PRESS. NO 000024 = V01 + FR0004 + V16 + AV + PRESS. NC GROUP COMPOSITION (WITH EXTERNAL PRESSURE GAUGE): 000025 = F00 + R000 + L00 000026 = FR0000 + L00 000027 = V01 + FR0000 + L00 000028 = V01 + FR0000 000029 = FR0000 + V16 + AV 000030 = FR0000 + L00 + V16 + AV 000031 = V01 + FR0000 + V16 + AV 000032 = V01 + FR0000 + L00 + V16 + AV + PRESS. NO 000033 = V01 + FR0000 + L00 + V16 + AV + PRESS. NC 000034 = V01 + FR0000 + V16 + AV + PRESS. NO 000035 = V01 + FR0000 + V16 + AV + PRESS. NC 000036 = F13 + FC03
3/8	CONNECTIONS: 3/8 = 3/8 1/2 = 1/2 3/4 = 3/4 1 = 1	
LH	FLOW DIRECTION: = from left to right (standard) LH = from right to left	

Composition of the assembled group 000014 and 000025

Components:
Filter
Regulator
Lubricator
Pressure Gauge
Bracket



- ✓ Ex Stock
- ✎ UK Assembly
- ⓞ Please Call Sales Office

WITH BUILT IN PRESSURE GAUGE

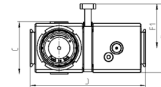
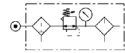
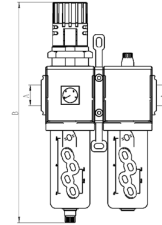
Part Number	Availability	A	B	C	D	F1	F2
MX2-3/8-000014	✎	3/8	289	74.5	210	70	104.5
MX2-1/2-000014	✎	1/2	289	74.5	210	70	104.5
MX2-3/4-000014	✎	3/4	289	74.5	210	70	104.5
MX3-3/4-000014	✎	3/4	345	81	268.5	68	106
MX3-1-000014	✎	1	345	81	268.5	68	106

WITH EXTERNAL PRESSURE GAUGE

Part Number	Availability	A	B	C	D	F1	F2
MX2-3/8-000025	✎	3/8	289	74.5	210	70	104.5
MX2-1/2-000025	✎	1/2	289	74.5	210	70	104.5
MX2-3/4-000025	✎	3/4	289	74.5	210	70	104.5
MX3-3/4-000025	✎	3/4	345	81	268.5	68	106
MX3-1-000025	✎	1	345	81	268.5	68	106

Composition of the assembled group 000015 and 000026

Components:
Filter-regulator
Lubricator
Pressure Gauge
Bracket



- ✓ Ex Stock
- ✎ UK Assembly
- ⓞ Please Call Sales Office

WITH BUILT IN PRESSURE GAUGE

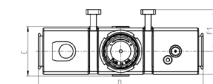
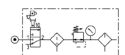
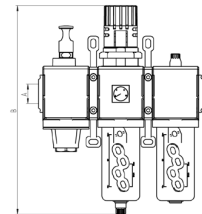
Part Number	Availability	A	B	C	D	F1	F2
MX2-1/2-000015	✎	3/8	289	74.5	140	70	104.5
MX2-3/8-000015	✎	1/2	289	74.5	140	70	104.5
MX2-3/4-000015	✎	3/4	289	74.5	140	70	104.5
MX3-3/4-000015	✎	3/4	345	81	179	68	106
MX3-1-000015	✎	1	345	81	179	68	106

WITH EXTERNAL PRESSURE GAUGE

Part Number	Availability	A	B	C	D	F1	F2
MX2-1/2-000026	✎	3/8	289	74.5	140	70	104.5
MX2-3/8-000026	✎	1/2	289	74.5	140	70	104.5
MX2-3/4-000026	✎	3/4	289	74.5	140	70	104.5
MX3-3/4-000026	✎	3/4	345	81	179	68	106
MX3-1-000026	✎	1	345	81	179	68	106

Composition of the assembled group 000016 and 000027

Components:
Lockable isolation
Filter-regulator
Lubricator
Pressure Gauge
Bracket



- ✓ Ex Stock
- ✎ UK Assembly
- ⓞ Please Call Sales Office

WITH BUILT IN PRESSURE GAUGE

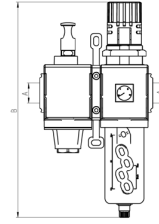
Part Number	Availability	A	B	C	D	F1	F2
MX2-3/8-000016	✎	3/8	289	74.5	210	70	104.5
MX2-1/2-000016	✎	1/2	289	74.5	210	70	104.5
MX2-3/4-000016	✎	3/4	289	74.5	210	70	104.5
MX3-3/4-000016	✎	3/4	345	81	268.5	68	106

WITH EXTERNAL PRESSURE GAUGE

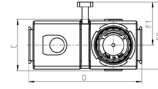
Part Number	Availability	A	B	C	D	F1	F2
MX2-3/8-000027	✎	3/8	289	74.5	210	70	104.5
MX2-1/2-000027	✎	1/2	289	74.5	210	70	104.5
MX2-3/4-000027	✎	3/4	289	74.5	210	70	104.5
MX3-3/4-000027	✎	3/4	345	81	268.5	68	106

Composition of the assembled group 000017 and 000028

Components:
 Lockable isolation 3/2 valve
 Filter-regulator
 Pressure Gauge
 Bracket



- ✓ Ex Stock
- ✎ UK Assembly
- ⌚ Please Call Sales Office

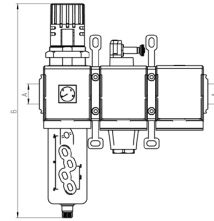


WITH BUILT IN PRESSURE GAUGE							
Part Number	Availability	A	B	C	D	F1	F2
MX2-3/8-000017	✎	3/8	289	74.5	140	70	104.5
MX2-1/2-000017	✎	1/2	289	74.5	140	70	104.5
MX2-3/4-000017	✎	3/4	289	74.5	140	70	104.5
MX3-3/4-000017	✎	3/4	345	81	179	68	106
MX3-1-000017	✎	1	345	81	179	68	106

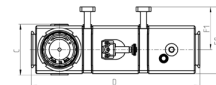
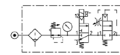
WITH EXTERNAL PRESSURE GAUGE							
Part Number	Availability	A	B	C	D	F1	F2
MX2-3/8-000028	✎	3/8	289	74.5	140	70	104.5
MX2-1/2-000028	✎	1/2	289	74.5	140	70	104.5
MX2-3/4-000028	✎	3/4	289	74.5	140	70	104.5
MX3-3/4-000028	✎	3/4	345	81	179	68	106
MX3-1-000028	✎	1	345	81	179	68	106

Composition of the assembled group 000018 and 000029

Components:
 Filter-regulator
 Lockable isolation 3/2 valve
 Soft start valve
 Pressure Gauge
 Bracket



- ✓ Ex Stock
- ✎ UK Assembly
- ⌚ Please Call Sales Office

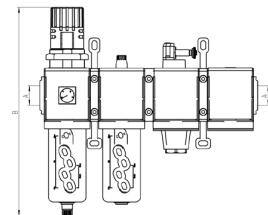


WITH BUILT IN PRESSURE GAUGE							
Part Number	Availability	A	B	C	D	F1	F2
MX2-3/8-000018	✎	3/8	289	74.5	210	70	104.5
MX2-1/2-000018	✎	1/2	289	74.5	210	70	104.5
MX2-3/4-000018	✎	3/4	289	74.5	210	70	104.5
MX3-3/4-000018	✎	3/4	345	81	268.5	68	106
MX3-1-000018	✎	1	345	81	268.5	68	106

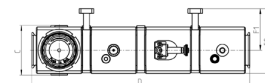
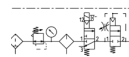
WITH EXTERNAL PRESSURE GAUGE							
Part Number	Availability	A	B	C	D	F1	F2
MX2-3/8-000029	✎	3/8	289	74.5	210	70	104.5
MX2-1/2-000029	✎	1/2	289	74.5	210	70	104.5
MX2-3/4-000029	✎	3/4	289	74.5	210	70	104.5
MX3-3/4-000029	✎	3/4	345	81	268.5	68	106
MX3-1-000029	✎	1	345	81	268.5	68	106

Composition of the assembled group 000019 and 000030

Components:
 Filter-regulator
 Lubricator
 Lockable isolation 3/2 valve
 Soft start valve
 Pressure Gauge
 Bracket



- ✓ Ex Stock
- ✎ UK Assembly
- ⌚ Please Call Sales Office

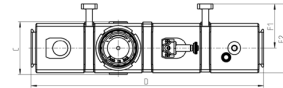
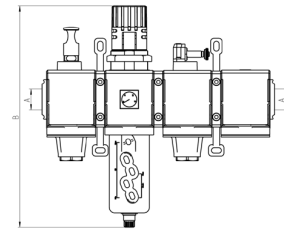
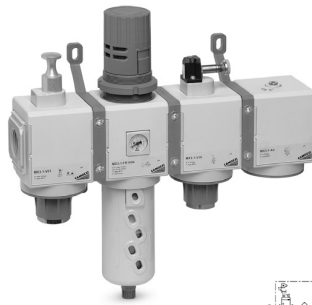


WITH BUILT IN PRESSURE GAUGE							
Part Number	Availability	A	B	C	D	F1	F2
MX2-3/8-000019	✎	3/8	289	74.5	280	70	104.5
MX2-1/2-000019	✎	1/2	289	74.5	280	70	104.5
MX2-3/4-000019	✎	3/4	289	74.5	280	70	104.5
MX3-3/4-000019	✎	3/4	345	81	358	68	106
MX3-1-000019	✎	1	345	81	358	68	106

WITH EXTERNAL PRESSURE GAUGE							
Part Number	Availability	A	B	C	D	F1	F2
MX2-3/8-000030	✎	3/8	289	74.5	280	70	104.5
MX2-1/2-000030	✎	1/2	289	74.5	280	70	104.5
MX2-3/4-000030	✎	3/4	289	74.5	280	70	104.5
MX3-3/4-000030	✎	3/4	345	81	358	68	106
MX3-1-000030	✎	1	345	81	358	68	106

Composition of the assembled group 000020 and 000031

- Components:
 Lockable isolation 3/2 valve
 Filter-regulator
 Lockable isolation 3/2 valve
 Soft start valve
 Pressure Gauge
 Bracket



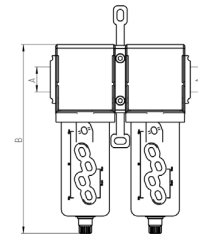
- ✓ Ex Stock
- ✎ UK Assembly
- ⌚ Please Call Sales Office

WITH BUILT IN PRESSURE GAUGE							
Part Number	Availability	A	B	C	D	F1	F2
MX2-3/8-000020	✎	3/8	289	74.5	280	70	104.5
MX2-1/2-000020	✎	1/2	289	74.5	280	70	104.5
MX2-3/4-000020	✎	3/4	289	74.5	280	70	104.5
MX3-3/4-000020	✎	3/4	345	81	358	68	106
MX3-1-000020	✎	1	345	81	358	68	106

WITH EXTERNAL PRESSURE GAUGE							
Part Number	Availability	A	B	C	D	F1	F2
MX2-3/8-000031	✎	3/8	289	74.5	280	70	104.5
MX2-1/2-000031	✎	1/2	289	74.5	280	70	104.5
MX2-3/4-000031	✎	3/4	289	74.5	280	70	104.5
MX3-3/4-000031	✎	3/4	345	81	358	68	106
MX3-1-000031	✎	1	345	81	358	68	106

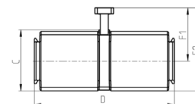
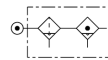
Composition of the assembled group 000036

- Components:
 Filter
 Coalescing filter
 Bracket



- ✓ Ex Stock
- ✎ UK Assembly
- ⌚ Please Call Sales Office

FILTER SET							
Part Number	Availability	A	B	C	D	F1	F2
MX2-3/8-000036	✎	3/8	210	72	140	70	104.5
MX2-1/2-000036	✎	1/2	210	72	140	70	104.5
MX2-3/4-000036	✎	3/4	210	72	140	70	104.5
MX3-3/4-000036	✎	3/4	231	78	179	68	106
MX3-1-000036	✎	1	231	78	179	68	106



Please see page 206 for Series MX Accessories

Series MX Accessories for FRL

- ✓ Ex Stock
- ✎ UK Assembly
- ☎ Please Call Sales Office

Rapid Clamp Kit for Series MX - Size 2

Kit MX2-X supplied with: 1 rapid clamp, 1 O-ring OR 3125**, 2 hexagonal nuts M5, 2 screws M5x69.

Kit MX2-Z supplied with: 1 rapid clamp, 1 O-ring OR 3125**, 1 hexagonal nut M5, 1 screw M5x69, 1 screw M5x85 for wall fixing.

** it can be ordered separately (cod. 160-39-11/19)

Materials: technopolymer clamp, NBR O-ring, zinc-plated stainless steel nuts and screws.

Part Number	Availability
MX2-X	✓
MX2-Z*	✓

*kit with wall fixing screw



Rapid Clamp Kit for Series MX - Size 3

Kit MX3-X supplied with: 1 rapid clamp, 1 O-ring OR 3150 **, 2 square nuts M6, 2 screws M6x75.

Kit MX3-Z supplied with: 1 rapid clamp, 1 O-ring OR 3150 **, 1 square nut M6, 1 screw M6x75, 1 screw M6x90 for wall fixing.

** it can be ordered separately (cod. C401-F33)

Materials: technopolymer clamp, NBR O-ring, zinc-plated stainless steel nuts and screws.

Part Number	Availability
MX3-X	✓
MX3-Z	✓



Rapid Clamp Kit with wall fixing brackets for Series MX - Size 2

The kit MX2-Y is supplied with:

1 wall rapid clamp, 1 O-ring OR 3125 **, 2 hexagonal nuts, 2 screws M5x69.

** it can be separately ordered (cod. 160-39-11/19)

Materials: technopolymer clamp, NBR O-ring, zinc-plated stainless steel nuts and screws.

Part Number	Availability
MX2-Y	✓



Rapid Clamp Kit with wall fixing brackets for Series MX - Size 3

The kit MX3-Y is supplied with:

1 wall rapid clamp, 1 O-ring OR 3150 **, 2 square nuts M6, 2 screws M6x75

** it can be also separately ordered (cod. C401-F33)

Materials: technopolymer clamp, NBR O-ring, zinc-plated stainless steel nuts and screws.

Part Number	Availability
MX3-Y	✓



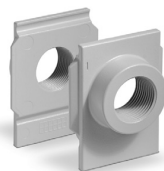
Terminal Flanges (IN/OUT) for Series MX

The kit is supplied with:

- 1 flange INLET side
- 1 flange OUTLET side

Part Number	Availability
MX2-3/8-FL	✓
MX2-1/2-FL	✓
MX2-3/4-FL	✓
MX3-3/4-FL	✓
MX3-1-FL	✓

Materials: painted aluminium flanges.



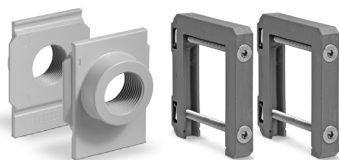
Fixing bracket for regulators Series MX

The kit is supplied with 1 zinc-plated stainless steel bracket

Part Number	Availability
MX2-S	✓
MX3-S	✓



Rapid clamps kit + flanges for Series MX

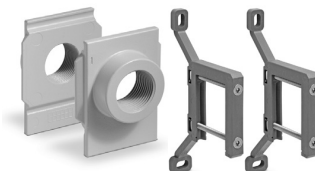


Part Number	Availability
MX2-3/8-HH	✓
MX2-1/2-HH	✓
MX2-3/4-HH	✓
MX2-3/8-JJ*	✓
MX2-1/2-JJ*	✓
MX2-3/4-JJ*	✓

Part Number	Availability
MX3-3/4-HH	✓
MX3-1-HH	✓
MX3-3/4-JJ*	✓
MX3-1-JJ*	✓

*kit with wall fixing screw

Rapid clamps kit with wall fixing brackets + flanges for Series MX



Part Number	Availability
MX2-3/8-KK	✓
MX2-1/2-KK	✓
MX2-3/4-KK	✓

Part Number	Availability
MX3-3/4-KK	✓
MX3-1-KK	✓