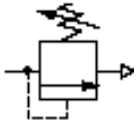


Air line equipment

Excelon modular system

V72G, V74G Pressure relief valves

G¹/₄ to G³/₄



Excelon design allows in-line installation or modular installation with other Excelon products

Push to lock adjusting knob with tamper resistant accessory

Helps protect air operated equipment from over pressure by retarding excessive pressure build up

Norgren pressure relief valves comply with category 0(S.E.P.) and category 1 of the Pressure Equipment Directive 97/23/EC. If categories 2, 3 or 4 products are required contact our Technical Services.

Technical data

Medium:

Compressed air

Gauge ports:

G¹/₈

Relief port:

G¹/₄ (V72G), G¹/₂ (V74G)

Ambient temperature:

-34° to +65°C (V72G)

-34° to +80°C (V74G)

Consult our Technical Service for use below +2°C

Materials

V72G:

Body: zinc body

Bonnet: acetal

Valve: brass

Elastomers: neoprene

Bottom plug: acetal

V74G:

Body & bonnet: aluminium

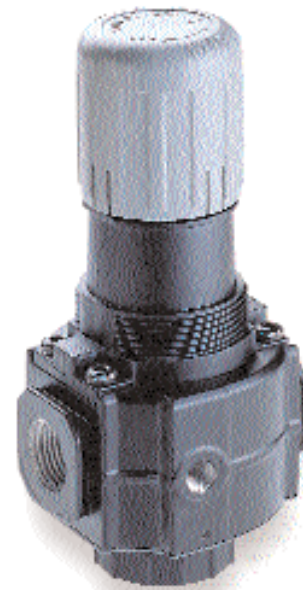
Valve: aluminium and nitrile

Elastomers: nitrile

Bottom plug: acetal



V72G



V74G

| Port size | kg | Model | Service kit |
|-------------------------------|------|--------------|-------------|
| G ¹ / ₄ | 0,33 | V72G-2GK-NMN | 4209-03 |
| G ³ / ₈ | 0,33 | V72G-3GK-NMN | 4209-03 |
| G ³ / ₈ | 0,69 | V74G-3GK-NMN | 4384-700 |
| G ¹ / ₂ | 0,68 | V74G-4GK-NMN | 4384-700 |
| G ³ / ₄ | 0,67 | V74G-6GK-NMN | 4384-700 |

Note: for Excelon 73 combinations use V74G.

Models listed include ISO G parallel threads, knob adjustment, and a 0,3 to 10 bar relief pressure adjustment range.

Options selector

V7★G-★★★-N★★

| Series | Substitute | Gauge | Substitute |
|----------------|------------|-----------------------------------|------------|
| 72 | 2 | With | G |
| 73 | 3 | Without | N |
| 74 | 4 | | |
| Port size | Substitute | Relief pressure adjustment range* | Substitute |
| 1/4" (72) | 2 | 0,3 ... 4 bar | F |
| 3/8" | 3 | 0,3 ... 10 bar | M |
| 1/2" (74) | 4 | 0,7 ... 17 bar (74)** | S |
| 3/4" (74) | 6 | 0,3 ... 2 bar (72) | C |
| Threads | Substitute | Adjustment | Substitute |
| PTF | A | Knob | K |
| ISO Rc taper | B | T-bar | T |
| ISO G parallel | G | | |

* Relief valve can be adjusted to pressures in excess of, and less than, those specified. Do not use these units to control pressures outside of the specified ranges.

**Units with 17 bar relief pressure range are available only with the T-bar adjustment; therefore substitute T at the 7th position and S at the 9th position.

Accessories

| Series | Port size | Wall mounting bracket | Neck mounting bracket | Gauge 0 ... 10 bar† | Panel nut | Tamper resistant cover and seal wire | Quikmount pipe adaptors (quantity of 1) | Quikclamp | Quikclamp and Quikclamp wall bracket |
|--------|-------------------------------|-----------------------|-----------------------|---------------------|-----------|--------------------------------------|---|-----------|--------------------------------------|
| V72G | G ¹ / ₄ | 4224-50 | 74316-50 | 18-013-989 | 4248-89 | 4255-51 | 4215-08 | 4214-51 | 4214-52 |
| | G ³ / ₈ | | | | | | 4215-09 | | 4213-89* |
| V74G | G ³ / ₈ | | | | | | 4315-10 | | 4314-52 |
| | G ¹ / ₂ | 4324-50 | 4368-51 | 18-013-013 | 4348-89 | 4355-51 | 4315-11 | 4314-51 | 4313-50* |
| | G ³ / ₄ | | | | | | 4315-12 | | |

* Bracket only. # Other pressure ranges available – see page 486

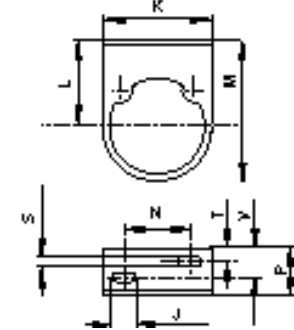
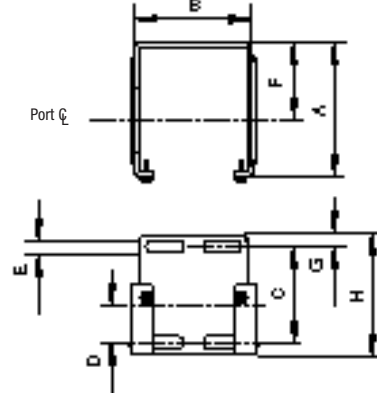
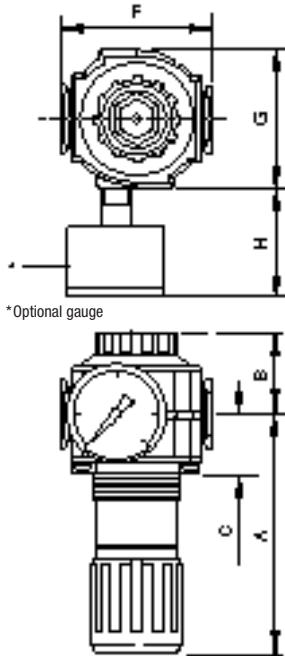
Excelon modular system

V72G, V74G Pressure relief valves

G $\frac{1}{4}$ to G $\frac{3}{4}$

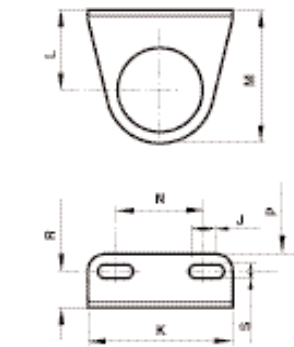
Bracket mounting

Neck mounting bracket (72)



| Series | A | B | C | D | E | F | G | H |
|--------|----|----|----|------|---|----|---|----|
| 72 | 60 | 42 | 39 | 18,6 | 4 | 38 | 6 | 51 |
| 74 | 79 | 69 | 50 | 20 | 5 | 51 | 6 | 61 |

Neck mounting bracket (74)



| Series | A | B | C | F | G | H | Panel Ø | Panel depth |
|--------|-----|----|----|----|----|----|---------|-------------|
| 72 | 73 | 25 | 26 | 50 | 48 | 35 | 40 | 0 ... 4 |
| 74 | 127 | 43 | 31 | 80 | 74 | 56 | 52 | 2 ... 6 |

| Series | J | K | L | M | N | P | R | S | T | V |
|--------|-----|----|----|------|----|----|----|-----|---|----|
| 72 | 8,5 | 49 | 38 | 63,5 | 30 | 24 | - | 4,4 | 7 | 10 |
| 74 | 24 | 89 | 52 | 86 | 56 | 35 | 23 | 7 | - | - |

Flow characteristics

