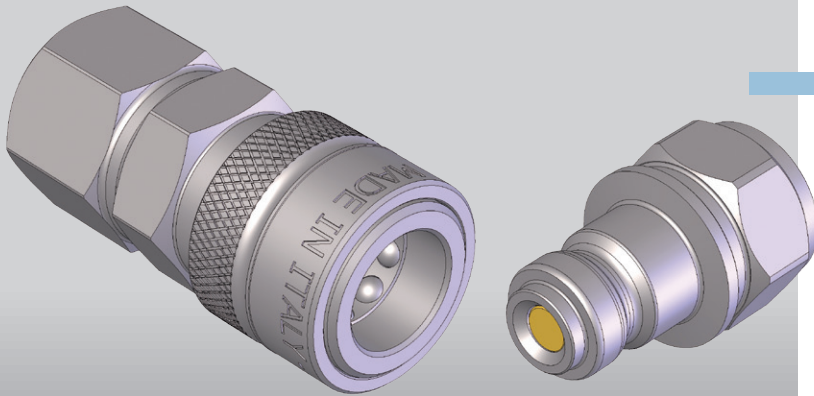


**1000 bar/115**  
**ALTISSIMA PRESSIONE**  
**UHP COUPLINGS**  
**HÖCHSTDRUCK**  
**ULTRA HAUTE PRESSION**



### Caratteristiche tecniche

- Occlusione: valvola
- Aggancio: sfere radiali
- Materiale: acciaio ad alta resistenza
- Finitura: Zn-Fe (Cr III)
- Filettature: BSP - NPT
- Guarnizioni standard: miscela speciale
- Temperatura d'esercizio: -35 °C +130 °C
- Pressioni di esercizio: 1000 bar
- Fattore di sicurezza: 1:2,5
- Collaudo: in elio, 100% a bassa e alta pressione
- Connessione in pressione: non consentita

Nominal size				Max working pressure	Rated flow	Max flow rate	Min burst pressure			Fluid spillage
DNP	BG	ISO	mm				Male	Female	Coupled	
06	1	6.3	2,5	100 MPa	6 l/min	6 l/min	250 MPa	250 MPa	250 MPa	0,008 cc

1 MPa = 145,04 psi • 1 l = 0,264 gal

### Technical data

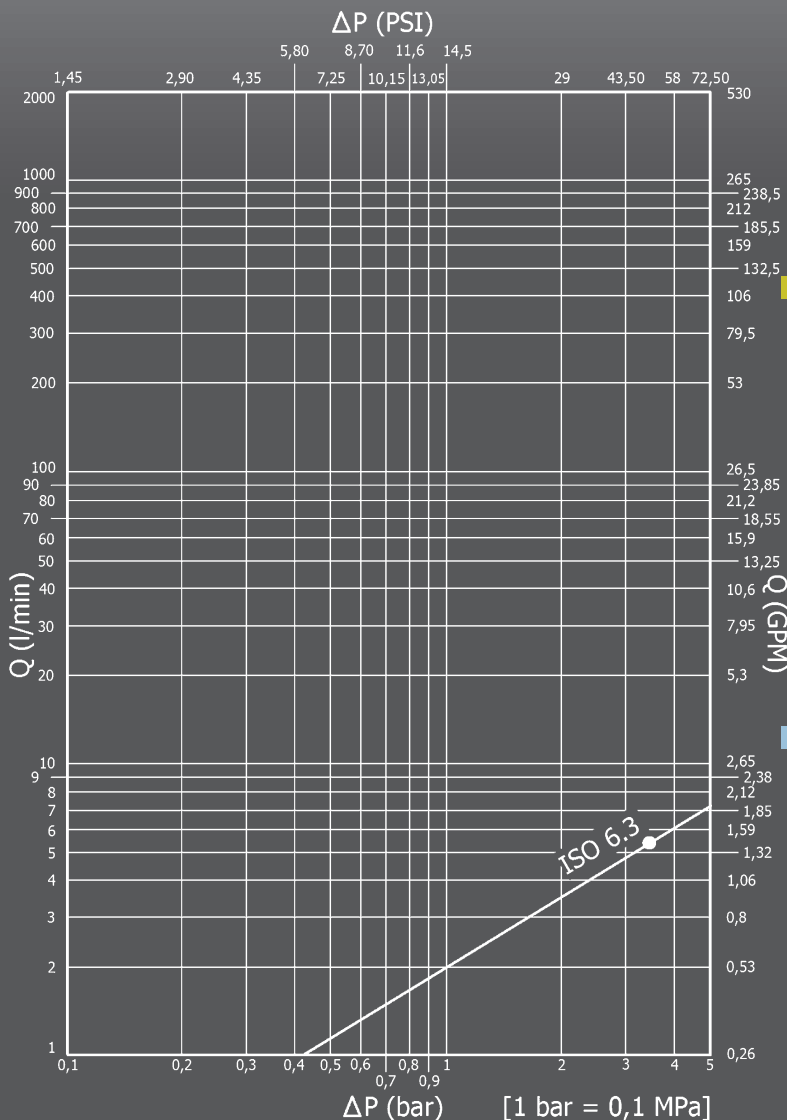
- Occlusion: poppet
- Locking: radial balls
- Material: high resistance steel
- Finishing: Zn-Fe (Cr III)
- Threads: BSP - NPT
- Standard seals: special compound
- Working temperature: -35 °C +130 °C
- Working pressure: 1000 bar
- Safety factor: 1:2,5
- Test: with Helium, 100% at low and high pressure
- Connection under pressure: not allowed

### Technische Merkmale

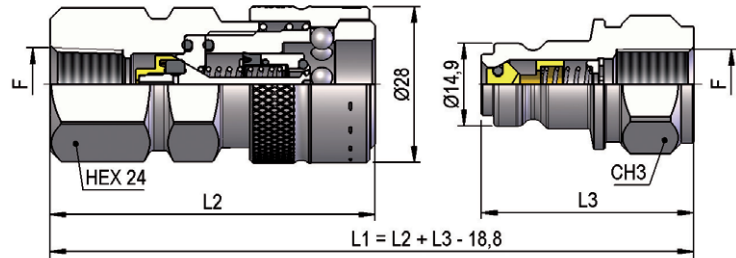
- Verschluss: ventil
- Kupplung: Radialkugeln
- Werkstoff: hochwertiger Stahl
- Ausführung: Zn-Fe (Cr III)
- Gewinde: BSP - NPT
- Standard-Dichtungen: Spezialcompound
- Betriebstemperatur: -35 °C +130 °C
- Betriebsdruck: 1000 bar
- Sicherheitsfaktor: 1:2,5
- Test: mit Helium, 100% bei niedrigen und hohen Druck
- Kuppeln unter Druck: nicht möglich

### Caracteristiques techniques

- Obturation: clapet
- Accrochage: billes radiales
- Matériel: acier à haute résistance
- Traitement: Zn-Fe (Cr III)
- Taraudage: BSP - NPT
- Joints standard: composé spécial
- Température de service: -35 °C +130 °C
- Pression de service: 1000 bar
- Facteur de sécurité: 1:2,5
- Test: avec hélium, 100% à basse et haute pression
- Connexion sous pression: pas possible

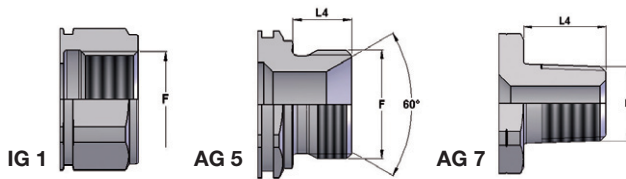


**PCJ5 DN06 - BG 1 - ISO 6.3**



THREADS	L2	CH3	L3	L4	F	STANDARD	FEMMINA - FEMALE - MUFFE - FEMELLE			MASCHIO - MALE - STECKER - MALE		
							COD. F	Weight (g)	Packaging (pcs.)	COD. M	Weight (g)	Packaging (pcs.)
<b>IG 1</b>	54,3	22	38,1		BSP 1/8"	DIN 3852-2-X	PCJ5.0604.002	176	100	PCJ5.0604.003	78	150
	61,3	22	38,1		BSP 1/4"	DIN 3852-2-X	PCJ5.0606.002	195	100	PCJ5.0606.003	71	150
	58,3	22	35,7		NPT 1/4"	ANSI B1.20.1	PCJ5.0606.012	186	100	PCJ5.0606.013	67	150
	63,3	24	39,6		BSP 3/8"	DIN 3852-2-X	PCJ5.0610.002	193	100	PCJ5.0610.003	84	150
	60,3	24	39,6		NPT 3/8"	ANSI B1.20.1	PCJ5.0610.012	185	100	PCJ5.0610.013	78	150
<b>AG 7</b>	62,3	22	63,2	14	NPT 1/4"	ANSI B1.20.1	PCJ5.0606.022	172	100	PCJ5.0606.023	122	100
<b>AG 5</b>	61,3	22	48,8	12	BSP 1/4"	DIN 3852-2-A	PCJ5.0606.212	171	100	PCJ5.0606.213	90	150
	61,3	22	61,1	12	BSP 3/8"	DIN 3852-2-A	PCJ5.0610.212	174	100	PCJ5.0610.213	126	100

**THREADS**



**PCJ5 - ACCESSORI / ACCESSORIES / ZUBEHÖR / ACCESSOIRES**

**PLASTIC CAPS**

NOMINAL SIZE		FEMALE DUST PLUG				MALE DUST CAP				COLOUR	MATERIAL			
DNP	BG	ISO	COD. F	Dimensions			Weight (g)	COD. M	Dimensions			Weight (g)		
				D	L	D1			D	L	D1			
06	1	6.3	SPCJ.06002	29	110	20,5	16	SPCJ.06003	29	110	22,5	13		PVC

