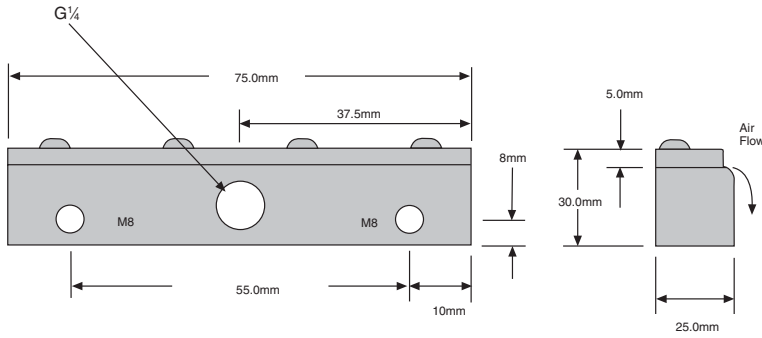




ALUMINIUM STRIP AIRMOVER SE75



Material: Aluminium/Zinc plated steel

Weight: 0.16Kg

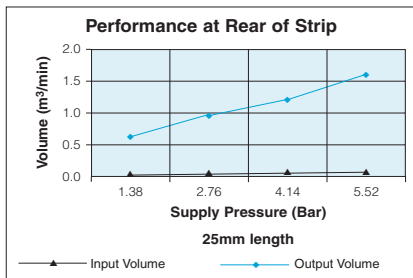
Standard Gap: 0.05-0.10mm

dB(A) at: 5.5 bar is 80

Shims: Not Applicable

Standard Inlet Threads: G¹/₄

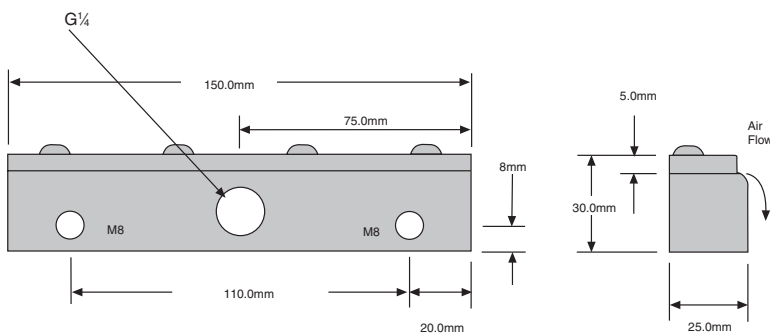
Options: ¹/₄" NPT
Please specify on order ¹/₄" NPTF



Bar	Vol in m ³ /min	Vol out m ³ /min
1.38	0.034	0.651
2.76	0.054	0.963
4.14	0.074	1.218
5.52	0.093	1.642

per 25mm length

ALUMINIUM STRIP AIRMOVER SE150



Material: Aluminium/Zinc plated steel

Weight: 0.324Kg

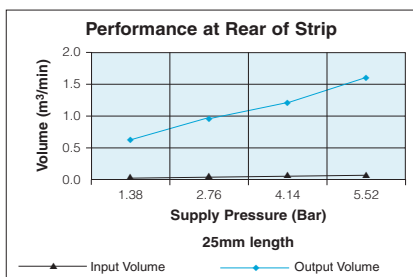
Standard Gap: 0.05-0.10mm

dB(A) at: 5.5 bar is 80

Shims: Not Applicable

Standard Inlet Threads: G¹/₄

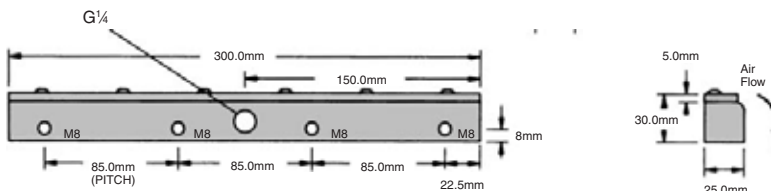
Options: ¹/₄" NPT
Please specify on order ¹/₄" NPTF



Bar	Vol in m ³ /min	Vol out m ³ /min
1.38	0.034	0.651
2.76	0.054	0.963
4.14	0.074	1.218
5.52	0.093	1.642

per 25mm length

SE300 ALUMINIUM STRIP AIRMOVER



Material: Aluminium/Zinc plated steel

Weight: 0.7Kg

Standard Gap: 0.05-0.10mm

dB(A) at: 5.5 bar is 80

Shims: Not Applicable

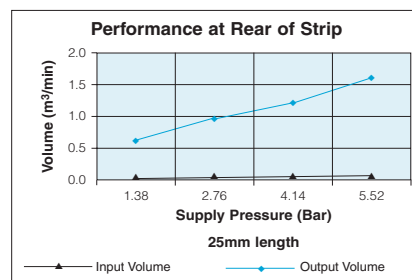
Standard Inlet Threads: G $\frac{1}{4}$

Options: $\frac{1}{4}$ " NPT

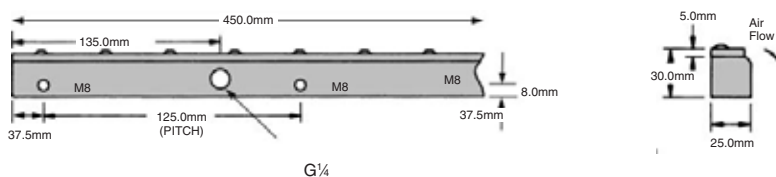
Please specify on order $\frac{1}{4}$ " NPTF

Bar	Vol in m ³ /min	Vol out m ³ /min
1.38	0.034	0.651
2.76	0.054	0.963
4.14	0.074	1.218
5.52	0.093	1.642

per 25mm length



SE450 ALUMINIUM STRIP AIRMOVER



Material: Aluminium/Zinc plated steel.

Weight: 1.0Kg

Standard Gap: 0.05-0.10mm

dB(A) at: 5.5 bar is 80

Shims: Not Applicable

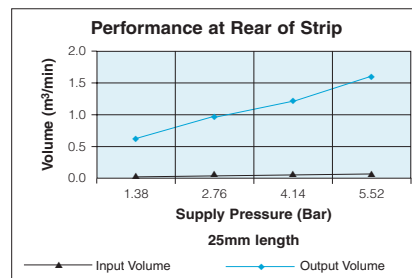
Standard Inlet Threads: G $\frac{1}{4}$

Options: $\frac{1}{4}$ " NPT

Please specify on order $\frac{1}{4}$ " NPTF

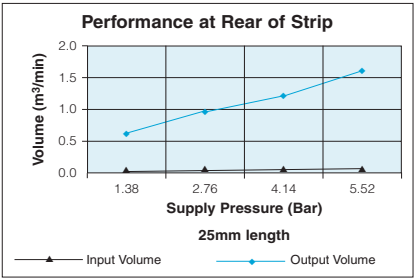
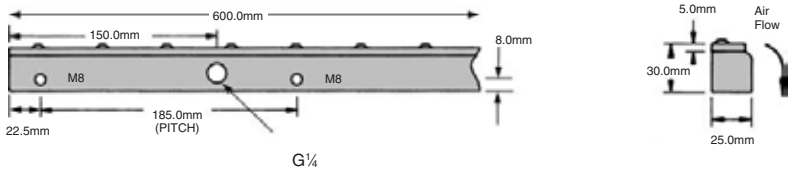
Bar	Vol in m ³ /min	Vol out m ³ /min
1.38	0.034	0.651
2.76	0.054	0.963
4.14	0.074	1.218
5.52	0.093	1.642

per 25mm length





ALUMINIUM STRIP AIRMOVER SE600

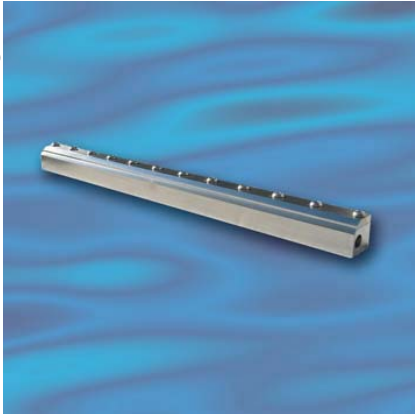
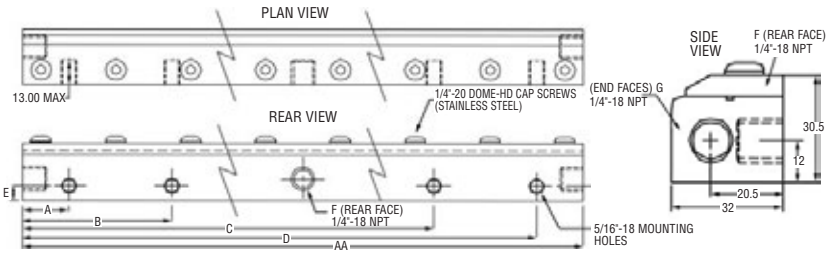


Bar	Vol in m³/min	Vol out m³/min
1.38	0.034	0.651
2.76	0.054	0.963
4.14	0.074	1.218
5.52	0.093	1.642

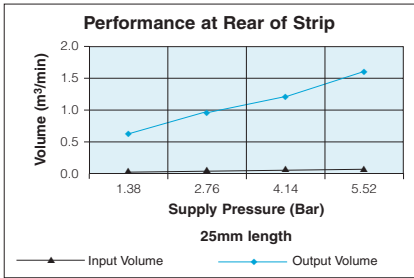
per 25mm length

Material: Aluminium/Zinc plated steel.
Weight: 1.35Kg
Standard Gap: 0.05-0.10mm
dB(A) at: 5.5 bar is 80
Shims: Not Applicable
Standard Inlet Threads: G $\frac{1}{4}$
Options: $\frac{1}{4}$ " NPT
Please specify on order $\frac{1}{4}$ " NPTF

ALUMINIUM STRIP AIRMOVER SE750



PART NO. (Stainless Steel)	AA	A	B	C	D	E	F # of Rear Inlets	G # of Side Inlets
Model SE750	30" 761mm	1.4" 35mm	8.9" 227mm	19.1" 485mm	28.6" 727mm	0.3" 8mm	2	2



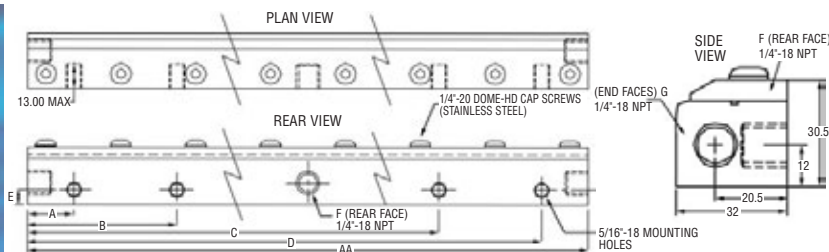
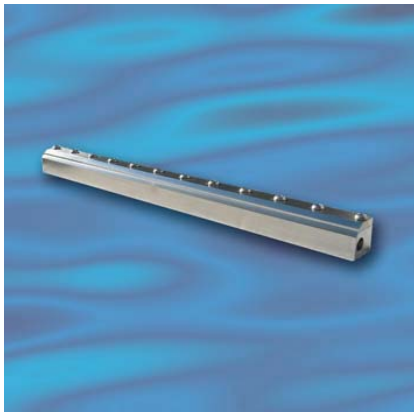
Bar	Vol in m³/min	Vol out m³/min
1.38	0.034	0.651
2.76	0.054	0.963
4.14	0.074	1.218
5.52	0.093	1.642

per 25mm length

Material: Aluminium/Zinc plated steel.
Weight: 3.6Kg
Standard Gap: 0.05-0.10mm
dB(A) at: 5.5 bar is 80
Shims: Not Applicable
Standard Inlet Threads: G $\frac{1}{4}$
Options: $\frac{1}{4}$ " NPT
Please specify on order $\frac{1}{4}$ " NPTF



SE900 ALUMINIUM STRIP AIRMOVER



PART NO. (Stainless Steel)	AA	A	B	C	D	E	F # of Rear Inlets	G # of Side Inlets
Model SE900	36" 914mm	1.4" 35mm	10.9" 277mm	26.9" 683.5mm	34.6" 879mm	0.3" 8mm	2	2

Material: Aluminium/Zinc.

Weight: 4.3Kg

Standard Gap: 0.05-0.10mm

dB(A) at: 5.5 bar is 80

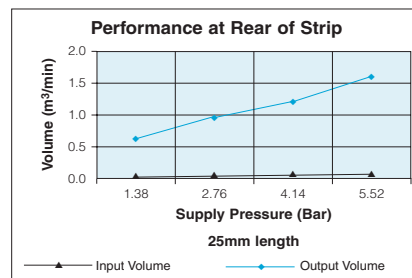
Shims: Not Applicable

Standard Inlet Threads: G $\frac{1}{4}$

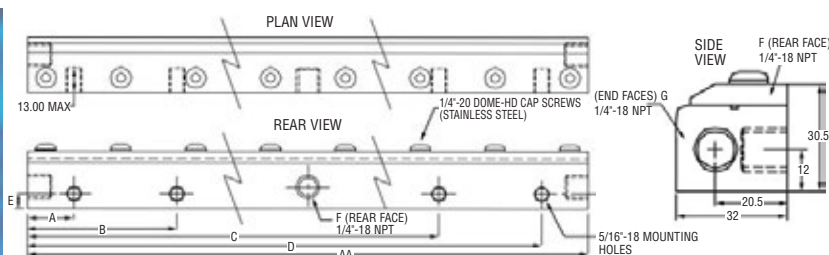
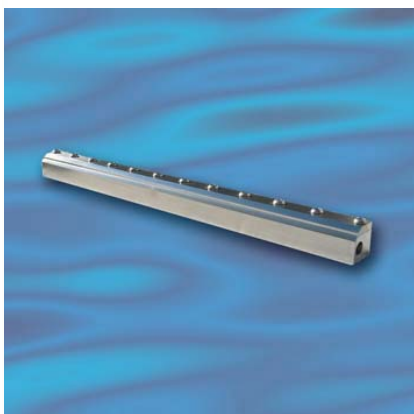
Options: $\frac{1}{4}$ " NPT
Please specify on order $\frac{1}{4}$ " NPTF

Bar	Vol in m ³ /min	Vol out m ³ /min
1.38	0.034	0.651
2.76	0.054	0.963
4.14	0.074	1.218
5.52	0.093	1.642

per 25mm length



SE75SS STAINLESS STEEL STRIP AIRMOVER



PART NO. (Stainless Steel)	AA	A	B	C	D	E	F # of Rear Inlets	G # of Side Inlets
Model SE75SS	3" 76mm	0.6" 16mm	-	-	2.4" 60mm	0.3" 8mm	1	2

Material: Stainless Steel (Grade 304)

Weight: 0.37

Standard Gap: 0.05-0.10mm

dB(A) at: 5.5 bar is 80

Shims: Not Applicable

Standard Inlet Threads: G $\frac{1}{4}$

Options: $\frac{1}{4}$ " NPT
Please specify on order $\frac{1}{4}$ " NPTF

Bar	Vol in m ³ /min	Vol out m ³ /min
1.38	0.034	0.651
2.76	0.054	0.963
4.14	0.074	1.218
5.52	0.093	1.642

per 25mm length

