

# ISO 6432 STAINLESS STEEL MINI CYLINDERS

## Cylinder Mountings

### Ordering Codes

F — KA      10      LB

Bore size

Style

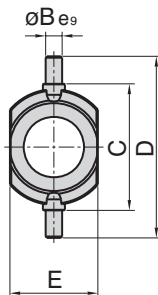
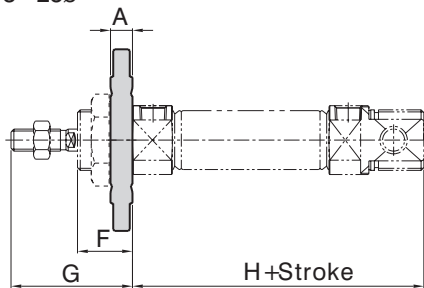
LB	Foot
FA	Flange
SDB	Rear Hinge
TC	Front Trunion



Bore	Mounting			
	LB	FA	SDB	TC
8 - 40	SPCC			SUS304

# TC

8 - 25ø



Bore/Item	8	10	12	16	20	25	32	40
A	6	6	8	8	8	8	11	12
B	4	4	6	6	6	6	9	10
C	26	26	38	38	46	46	54	64
D	38	38	58	58	66	66	74	84
E	20	20	25	25	32	32	45	55
F	12	12	17	17	20	22	30	35
G	28	28	38	38	44	50	58	69
H	58	58	67	73	82	87	82	101

32 - 40ø

