

## Valve plugs for self-assembly

# FESTO



Festo core product range  
Covers 80% of your automation tasks

Worldwide:

Always in stock

Superb:

Festo quality at an attractive price

Easy:

Simplified procurement and warehousing

★ Generally ready for shipping ex works in 24 hours  
In stock at 13 Service Centres worldwide  
More than 2200 products

★ Generally ready for shipping ex works in 5 days  
Assembled for you at 4 Service Centres worldwide  
Up to  $6 \times 10^{12}$  variants per product family

Just look  
for the  
star!

## Product range overview

Function	Design	Type	Number of pins/wires	→ Page/Internet
Plug	<b>Electrical connection 1, socket type A</b>			
	To EN 175301-803	MSSD-C	3-pin	4
		MSSD-N		
		MSSD-C	4-pin	6
	<b>Electrical connection 1, socket type B</b>			
	To EN 175301-803	MSSD-V	3-pin	8
	To industry standard, 11 mm	MSSD-F	3-pin	10
	<b>Electrical connection 1, socket type C</b>			
	To EN 175301-803	MSSD-EB	3-pin	12
			4-pin	14
	To industry standard, 9.4 mm	MSSD-E	3-pin	16
	<b>Electrical connection 1, socket plug pattern ZB/ZC</b>			
	–	MSSD-ZBZC	4-pin	18

## Type codes

<b>001</b>	<b>Series</b>	
<b>MSSD</b>	Plug socket	

<b>002</b>	<b>Electrical connection 1, connection technology</b>	
<b>C</b>	Type A to EN 175301-803	
<b>F</b>	Type B as per industry standard 11 mm	
<b>E</b>	Type C as per industry standard 9.4 mm	
<b>EB</b>	Type C to EN 175301-803	
<b>N</b>	Type A to EN 175301-803	
<b>V</b>	Type B to EN 175301-803	
<b>ZBZC</b>	Connection pattern ZB/ZC	

<b>003</b>	<b>Electrical connection 1, number of pins/wires</b>	
	Standard	
<b>4P</b>	4-pin	

<b>004</b>	<b>Electrical connection 2, connection technology</b>	
	Standard	
<b>S</b>	Insulation displacement connector	

<b>005</b>	<b>Cable connector</b>	
	Standard	
<b>M12</b>	M12	
<b>M14</b>	M14	
<b>M16</b>	M16	
<b>TY</b>	Pg11	

<b>006</b>	<b>Operating voltage range</b>	
	Standard	
<b>24DC</b>	0 ... 30 V DC, 0 ... 24 V AC	
<b>24VDC</b>	0 ... 30 V DC, 0 ... 24 V AC	

<b>007</b>	<b>Version</b>	
	Standard	
<b>SD</b>	Special design	

<b>008</b>	<b>EU certification</b>	
	None	
<b>EX2</b>	II 3GD	

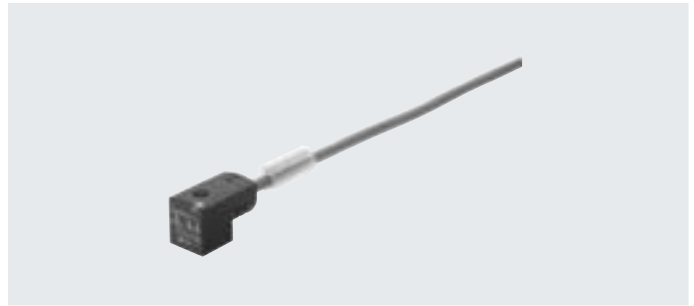
## Data sheet

### Plug socket

#### MSSD-C

#### MSSD-N

- For valves with D solenoid coil
- For valves with N1 solenoid coil
- For valves with H solenoid coil
- For valve series VZWM-L
- Cable connection with screw terminal



General technical data				
Type	MSSD-C	MSSD-C-M16	MSSD-N	MSSD-C-TY-24DC
Based on standard	–	–	EN 175301-803	–
Electrical connection 1				
Connection type	Socket	Socket	Socket	–
Cable outlet	Angled	Angled	Angled	–
Design	Rectangular	Rectangular	Rectangular	–
Connection technology	Plug pattern type A to DIN EN 175301-803	Plug pattern type A to DIN EN 175301-803	Plug pattern type A to EN 175301-803	–
Number of pins/wires	3	3	3	–
Type of mounting	On solenoid valve with M3 central screw	On solenoid valve with M3 central screw	On solenoid valve with M3 central screw	–
Contact durability	–	50	–	–
Electrical connection 2				
Connection technology	–	–	Screw terminal	–
Cable connector	Pg9	M16	M20x1.5	–
Cable diameter [mm]	6 ... 8	6 ... 8	8 ... 10	–
Nominal conductor cross section [mm <sup>2</sup> ]	1.5	1.5	1.5	–

Technical data – Electrical components				
Type	MSSD-C	MSSD-C-M16	MSSD-N	MSSD-C-TY-24DC
Operating voltage range	[V DC]	–	0 ... 24	–
	[V AC]	–	0 ... 250	–
Current load at 40°C	[A]	–	16	–

Materials				
Type	MSSD-C	MSSD-C-M16	MSSD-N	MSSD-C-TY-24DC
Housing	Polymer	Reinforced PA	Reinforced PA	–
Housing colour	Black	–	Black	–
Screws	–	–	Steel	–
Seals	–	HNBR	VMQ	–
Note on materials	RoHS-compliant	RoHS-compliant	RoHS-compliant	–
	–	–	Contains paint-wetting impairment substances	–

## Data sheet

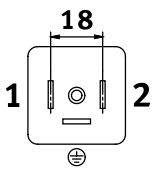
Operating and environmental conditions				
Type	MSSD-C	MSSD-C-M16	MSSD-N	MSSD-C-TY-24DC
Ambient temperature [°C]	-25 ... +90	-20 ... +115	-25 ... +80	-40 ... +90
CE marking (see declaration of conformity)	To EU Low Voltage Directive <sup>1)</sup>	-	-	-
Degree of protection	IP65	IP65	IP65	IP65
	-	To IEC 60529	-	To IEC 60529
Note on degree of protection	-	-	In assembled state	-
Maritime classification <sup>2)</sup>	See certificate	-	-	-

- 1) For information about the area of use, see the EC declaration of conformity at: [www.festo.com/sp](http://www.festo.com/sp) → Certificates.  
If the devices are subject to usage restrictions in residential, commercial or light-industrial environments, further measures for the reduction of the emitted interference may be necessary.
- 2) Additional information is available at [www.festo.com/sp](http://www.festo.com/sp) → Certificates.

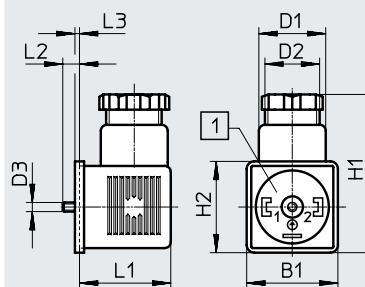
### Dimensions

Download CAD data → [www.festo.com](http://www.festo.com)

#### Pin allocation

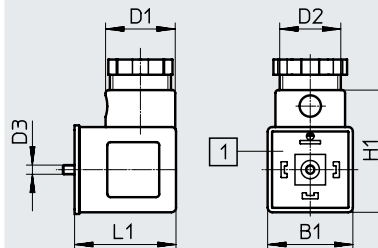


#### MSSD-C



- [1] Insert can be repositioned by 90°

#### MSSD-N



- [1] Plug pattern type A to EN 175301-803

Type	B1	D1 ∅	D2 ∅	D3 ∅	H1	H2	L1	L2	L3
MSSD-C	28	22	PG9	M3	52	28	26.5	5.5	1.5
MSSD-C-M16	27	22	M16x 1.5	M3	52	27	27	5.5	1.5
MSSD-C-TY-24DC	30	22	PG11	M3	52	30	30	5.5	1.5
MSSD-N	27.9	22.8	M20x1.5	M3	40	-	33.2	-	-

### Ordering data

Description	Signal status indication	Nominal conductor cross section [mm <sup>2</sup> ]	Weight [g]	Part no.	Type
Socket, plug pattern type A to EN 175301-803, 3-pin, angled	-	6 ... 8	22	<b>34583</b>	<b>MSSD-C</b>
		8 ... 10	38	<b>539709</b>	<b>MSSD-C-M16</b>
		8 ... 10	30	<b>★ 550067</b>	<b>MSSD-N</b>
	LED	≤ 1.5	-	<b>177617</b>	<b>MSSD-C-TY-24DC</b>

Festo core product range



Generally ready for shipping ex works in 24 hours  
Generally ready for shipping ex works in 5 days

## Data sheet

### Plug socket MSSD-C

- For valves with D and N1 solenoid coils
- Cable connection using screw terminal or insulation displacement technology



### Special features of insulation displacement technology (MSSD-C-S-M16)

With these plug sockets, the cable is no longer connected using individual clamping screws.

Instead, the flying leads are pressed into the patented insulation displacement contact when the screw is tightened.

- Strip the cable sheath
- Push it in
- Screw it in tightly
- Finished

### General technical data

Type	MSSD-C-4P	MSSD-C-S-M16
<b>Electrical connection 1</b>		
Connection type	Socket	Socket
Cable outlet	Angled	Angled
Design	Rectangular	Rectangular
Connection technology	Plug pattern type A to DIN EN 175301-803	Plug pattern type A to DIN EN 175301-803
Number of pins/wires	3	4
Type of mounting	On solenoid valve with M3 central screw	On solenoid valve with M3 central screw
Contact durability	–	10
<b>Electrical connection 2</b>		
Connection technology	Screw terminal	Insulation displacement connector
Cable connector	Pg9	–
Cable diameter [mm]	6 ... 8	5.5 ... 8
Nominal conductor cross section [mm <sup>2</sup> ]	≤ 1.5	0.5 ... 1

### Materials

Type	MSSD-C-4P	MSSD-C-S-M16
Housing	Polymer	PA
Housing colour	Black	Black
Note on materials	RoHS-compliant	RoHS-compliant

### Operating and environmental conditions

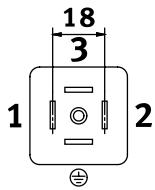
Type	MSSD-C-4P	MSSD-C-S-M16
Ambient temperature [°C]	–25 ... +90	–20 ... +90
Degree of protection	IP65	IP67
	–	To IEC 60529

Data sheet

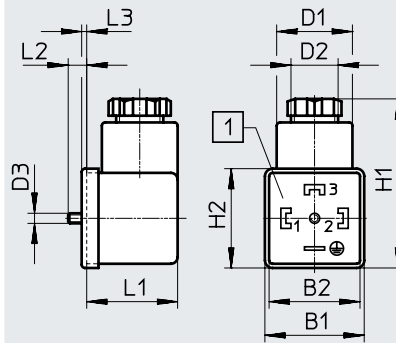
Dimensions

Pin allocation

Download CAD data → [www.festo.com](http://www.festo.com)

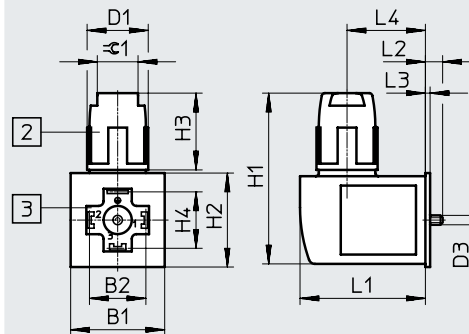


MSSD-C-4P



[1] Insert can be repositioned by 90°

MSSD-C-S-M16



[2] Union nut M16x1

[3] Connection side can be repositioned by 90°

Type	B1	B2	D1 ∅	D2 ∅	D3 ∅	H1	H2	H3	H4	L1	L2	L3	L4	⌀1
MSSD-C-4P	29.5	27	23.8	Pg9	M3	49	29.5	42	-	27	5.5	1.5	-	-
MSSD-C-S-M16	30	18	19.5	-	M3	54.5	30	24.5	18	40	5.5	1.5	25	13

Ordering data

Description	Cable connection	Weight [g]	Part no.	Type
Socket, plug pattern type A to DIN EN 175301-803, 4-pin, angled	Screw terminal	22	171157	MSSD-C-4P
	Insulation displacement connector	38	192748	MSSD-C-S-M16

## Data sheet

### Plug socket MSSD-V

- For valve with V solenoid coil
- Cable connection with screw terminal



General technical data		
Type	MSSD-V-M16	MSSD-V
<b>Electrical connection 1</b>		
Connection type	Socket	Socket
Cable outlet	Angled	Angled
Design	Rectangular	Rectangular
Connection technology	Plug pattern type B to DIN EN 175301-803	Plug pattern type B to DIN EN 175301-803
Number of pins/wires	3	3
Type of mounting	On solenoid valve with M3 central screw	On solenoid valve with M3 central screw
Contact durability	50	–
<b>Electrical connection 2</b>		
Connection technology	Screw terminal	Screw terminal
Cable connector	M16x1.5	Pg9
Cable diameter [mm]	6 ... 8	6 ... 8
Nominal conductor cross section [mm <sup>2</sup> ]	0.75	Max. 1.5
<b>Materials</b>		
Type	MSSD-V-M16	MSSD-V
Housing	Reinforced PA	Polymer
Housing colour	–	Black
Seals	HNBR	–
<b>Operating and environmental conditions</b>		
Type	MSSD-V-M16	MSSD-V
Ambient temperature [°C]	–20 ... +115	–25 ... +90
CE marking (see declaration of conformity) <sup>1)</sup>	–	To EU Low Voltage Directive
Degree of protection	IP65 To IEC 60529	IP65 –

1) Additional information is available at [www.festo.com/sp](http://www.festo.com/sp) → Certificates.

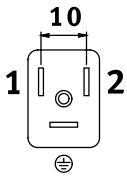


## Data sheet

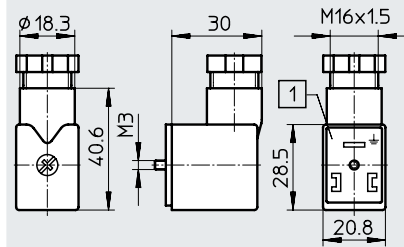
### Dimensions

Download CAD data → [www.festo.com](http://www.festo.com)

#### Pin allocation

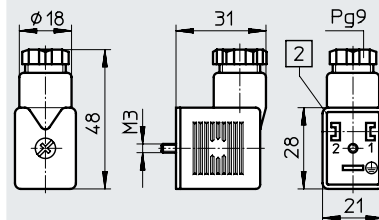


#### MSSD-V-M16



[1] Insert can be repositioned by 180°

#### MSSD-V



[1] Insert can be repositioned by 180°

### Ordering data

Description	Cable connection	Nominal conductor cross section [mm <sup>2</sup> ]	Weight [g]	Part no.	Type
Socket, plug pattern type B to DIN EN 175301-803, 3-pin, angled	Screw terminal	Max. 0.75	35 g	<b>539713</b>	<b>MSSD-V-M16</b>
		Max. 1.5	18 g	<b>33295</b>	<b>MSSD-V</b>

## Data sheet

### Plug socket MSSD-F

- For valves with F solenoid coils
- Cable connection using screw terminal or insulation displacement technology



General technical data				
Type	MSSD-F-M16	MSSD-F	MSSD-F-S-M16	
<b>Electrical connection 1</b>				
Connection type	Socket	Socket	Socket	
Cable outlet	Angled	Angled	Angled	
Design	Rectangular	Rectangular	Rectangular	
Connection technology	Plug pattern type B to industry standard 11 mm	Plug pattern type B to industry standard 11 mm	Plug pattern type B to industry standard 11 mm	
Number of pins/wires	3	3	3	
Type of mounting	On solenoid valve with M3 central screw	On solenoid valve with M3 central screw	On solenoid valve with M3 central screw	
Note on cable outlet	Can be repositioned by 180°	–	–	
Contact durability	50	–	10	
Protective earth connection	Present	–	–	
<b>Electrical connection 2</b>				
Connection technology	Screw terminal	Screw terminal	Insulation displacement connector	
Cable connector	M16x1.5	Pg9	M16x1.5	
Cable diameter [mm]	6 ... 8	6 ... 8	5.5 ... 8	
Nominal conductor cross section [mm <sup>2</sup> ]	Max. 0.75	Max. 1.5	0.5 ... 1	
<b>Technical data – Electrical components</b>				
Type	MSSD-F-M16	MSSD-F	MSSD-F-S-M16	
Operating voltage range	[V DC]	0 ... 250	–	
	[V AC]	0 ... 250	–	
Surge resistance [kV]	2	–	–	
Current load at 40°C [A]	6	–	–	
<b>Materials</b>				
Type	MSSD-F-M16	MSSD-F	MSSD-F-S-M16	
Housing	Reinforced PA	Polymer	PA	
Housing colour	Black	Black	Black	
Seals	HNBR	–	–	
Note on materials	RoHS-compliant	–	–	

Data sheet

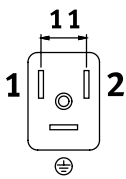
Operating and environmental conditions		MSSD-F-M16	MSSD-F	MSSD-F-S-M16
Type		MSSD-F-M16	MSSD-F	MSSD-F-S-M16
Ambient temperature [°C]		-20 ... +115	-25 ... +90	-25 ... +90
Corrosion resistance class CRC <sup>1)</sup>		1	-	-
Pollution degree		3	-	-
CE marking (see declaration of conformity) <sup>2)</sup>		-	To EU Low Voltage Directive	-
Degree of protection		IP65	IP65	IP67
Note on degree of protection		In assembled state	In assembled state	In assembled state

- 1) Corrosion resistance class CRC 1 to Festo standard FN 940070  
 Low corrosion stress. Dry indoor application or transport and storage protection. Also applies to parts behind coverings, in the non-visible interior area, and parts which are covered in the application (e.g. drive trunnions).  
 2) Additional information is available at [www.festo.com/sp](http://www.festo.com/sp) → Certificates.

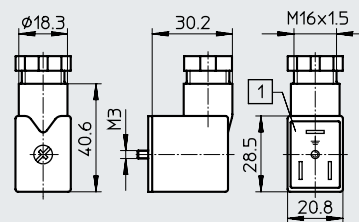
Dimensions

Download CAD data → [www.festo.com](http://www.festo.com)

Pin allocation

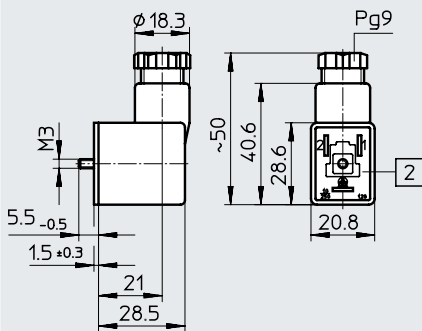


MSSD-F-M16



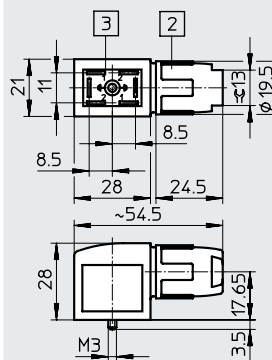
[1] Insert can be repositioned by 180°

MSSD-F



[2] Insert can be repositioned by 180°

MSSD-F-S-M16



- [2] Union nut M16x1
- [3] Connection side can be repositioned by 90°

With these plug sockets, instead of the cable being connected using individual clamping screws, the flying leads are pressed into the patented insulation displacement contact when the screw is tightened:

- Strip the cable sheath
- Push it in
- Screw it in tightly
- Finished

Ordering data

Description	Cable connection	Nominal conductor cross section [mm <sup>2</sup> ]	Weight [g]	Part no.	Type
Socket, plug pattern type B, to industry standard, 11 mm, 3-pin, angled	Screw terminal	Max. 0.75	35	539710	MSSD-F-M16
		Max. 1.5	17	★ 34431	MSSD-F
	Insulation displacement connector	0.5 ... 1	35	192746	MSSD-F-S-M16

Festo core product range



Generally ready for shipping ex works in 24 hours  
 Generally ready for shipping ex works in 5 days

## Data sheet

### Plug socket MSSD-EB

- For valves with EB and N2 solenoid coils



General technical data				
Type	MSSD-EB-M12-24VDC-SD-EX	MSSD-EB	MSSD-EB-M12	
<b>Electrical connection 1</b>				
Connection type	Socket	Socket	Socket	
Cable outlet	Angled	Angled	Angled	
Design	Rectangular	Rectangular	Rectangular	
Connection technology	Plug pattern type C, to DIN EN 175301-803	Plug pattern type C, to DIN EN 175301-803	Plug pattern type C, to DIN EN 175301-803	
Number of pins/wires	3	3	3	
Type of mounting	On solenoid valve with M2.5 central screw	On solenoid valve with M2.5 central screw	On solenoid valve with M2.5 central screw	
Note on cable outlet	Can be repositioned by 180°	–	–	
Contact durability	–	–	50	
<b>Electrical connection 2</b>				
Connection technology	Screw terminal	Screw terminal	Insulation displacement connector	
Cable connector	M12	Pg7	M12	
Cable diameter [mm]	4 ... 6	6 ... 8	4 ... 6	
Nominal conductor cross section [mm <sup>2</sup> ]	0.25 ... 0.5	≤ 0.75	1.5	

Technical data – Electrical components				
Type	MSSD-EB-M12-24VDC-SD-EX	MSSD-EB	MSSD-EB-M12	
Nominal operating voltage	[V DC]	–	300	–
	[V AC]	–	250	–
Operating voltage range	[V DC]	0 ... 30	–	–
	[V AC]	0 ... 24	–	–
Surge resistance	[kV]	0.8	4	–
Current load at 40°C	[A]	6	6	–

Materials				
Type	MSSD-EB-M12-24VDC-SD-EX	MSSD-EB	MSSD-EB-M12	
Housing	Reinforced PA	Polymer	Reinforced PA	
Housing colour	–	Black	–	
Seals	HNBR	NBR	HNBR	
Note on materials	RoHS-compliant	–	–	

## Data sheet

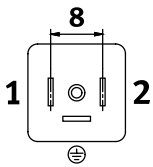
Operating and environmental conditions		MSSD-EB-M12-24VDC-SD-EX	MSSD-EB	MSSD-EB-M12
Type				
Ambient temperature	[°C]	-25 ... +125	-45 ... +90	-40 ... +125
Pollution degree		3	3	-
CE marking (see declaration of conformity) <sup>1)</sup>		-	To EU Low Voltage Directive	-
Degree of protection		IP65 To IEC 60529	IP65 To IEC 60529	IP65 To IEC 60529

1) Additional information is available at [www.festo.com/sp](http://www.festo.com/sp) → Certificates.

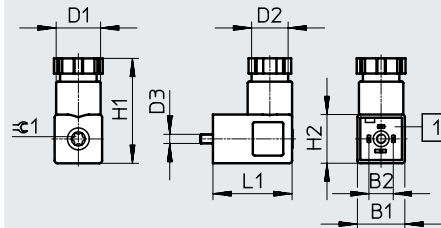
### Dimensions

Download CAD data → [www.festo.com](http://www.festo.com)

#### Pin allocation

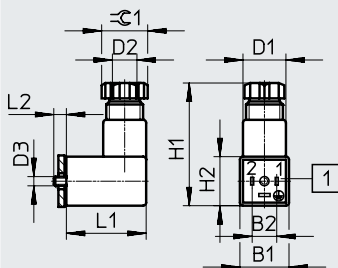


#### MSSD-EB-M12-24VDC-SD-EX



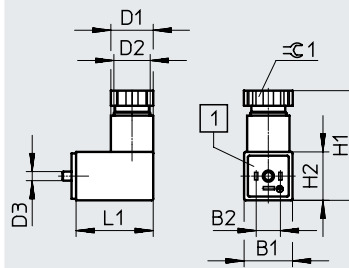
[1] Insert can be repositioned by 90°

#### MSSD-EB



[1] Insert can be repositioned by 90°

#### MSSD-EB-M12



[1] Insert can be repositioned by 90°

Type	B1	B2	D1 ∅	D2 ∅	D3 ∅	H1	H2	L1	L2	⊘ 1
MSSD-EB-M12-24VDC-SD-EX	15.6	8	14.6	M12x1.5	2.5	34.5	16	26	-	T8
MSSD-EB	15.5	8	15	Pg7	2.5	40	15.5	26	4.1	13
MSSD-EB-M12	15.5	8	15	M12x1.5	M2.5	33	15.5	25.5	-	13

### Ordering data

Description	Cable connection	Nominal conductor cross section [mm <sup>2</sup> ]	Weight [g]	Part no.	Type
Socket, plug pattern type C to DIN EN 175301-803, 3-pin, angled	Screw terminal	0.25 ... 0.5	-	570367	MSSD-EB-M12-24VDC-SD-EX
		≤ 0.75	11 g	★ 151687	MSSD-EB
		1.5	11 g	539712	MSSD-EB-M12

Festo core product range



Generally ready for shipping ex works in 24 hours  
Generally ready for shipping ex works in 5 days

## Data sheet

### Plug socket MSSD-EB

- For valves with EB and N2 solenoid coils



#### General technical data

##### Electrical connection 1

Connection type	Socket
Cable outlet	Angled
Design	Rectangular
Connection technology	Plug pattern type C
Number of pins/wires	4
Type of mounting	On solenoid valve with M2.5 central screw
Contact durability	10

##### Electrical connection 2

Connection technology	Insulation displacement connector
Cable diameter [mm]	4 ... 6

#### Materials

Housing	Reinforced PA
Housing colour	Black

#### Operating and environmental conditions

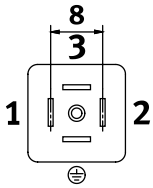
Ambient temperature [°C]	-25 ... +90
Degree of protection	IP67
	To IEC 60529

## Data sheet

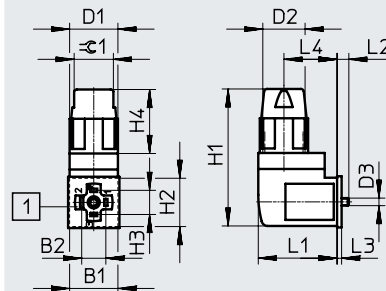
### Dimensions

Download CAD data → [www.festo.com](http://www.festo.com)

#### Pin allocation



#### MSSD-EB-S-M14



[1] Insert can be repositioned by 90°

With these plug sockets, instead of the cable being connected using individual clamping screws, the flying leads are pressed into the patented insulation displacement contact when the screw is tightened.

- Strip the cable sheath
- Push it in
- Screw it in tightly
- Finished

Type	B1	B2	D1 ∅	D2	D3 ∅	H1	H2	H3	H4	L1	L2	L3	L4	±0.1
MSSD-EB-S-M14	16	8	16	M14x1	2.5	45	16	8	21.2	26	4	1.5	17.6	13

#### Ordering data

Description	Cable connection	Nominal conductor cross section [mm <sup>2</sup> ]	Weight [g]	Part no.	Type
Socket, plug pattern type C to DIN EN 175301-803, 4-pin, angled	Insulation displacement connector	0.25 ... 0.5	17	<b>192745</b>	<b>MSSD-EB-S-M14</b>

Plug, socket type C, industry standard, 9.4 mm

## Data sheet

### Plug socket MSSD-E

- For valves with E solenoid coils



General technical data		
Type	MSSD-E	MSSD-E-M12
<b>Electrical connection 1</b>		
Connection type	Socket	Socket
Cable outlet	Angled	Angled
Design	Rectangular	Rectangular
Connection technology	Plug pattern type C to industry standard, 9.4 mm	Plug pattern type C to industry standard, 9.4 mm
Number of pins/wires	3	3
Type of mounting	On solenoid valve with M3 central screw	On solenoid valve with M3 central screw
Contact durability	–	50
<b>Electrical connection 2</b>		
Connection technology	Screw terminal	Screw terminal
Cable connector	Pg7	M12
Cable diameter [mm]	6 ... 8	4 ... 6
Nominal conductor cross section [mm <sup>2</sup> ]	0.75	0.75
<b>Technical data – Electrical components</b>		
Operating voltage range	[V DC]	0 ... 300
	[V AC]	0 ... 250
Current load at 40°C	[A]	6
<b>Materials</b>		
Type	MSSD-E	MSSD-E-M12
Housing	Reinforced PA	Reinforced PA
Housing colour	Black	Black
Seals	NBR	HNBR
Note on materials	–	RoHS-compliant
<b>Operating and environmental conditions</b>		
Type	MSSD-E	MSSD-E-M12
Ambient temperature [°C]	–25 ... +90	–20 ... +115
Corrosion resistance class CRC <sup>1)</sup>	–	1
Pollution degree	3	3
Degree of protection	IP65	IP65
Note on degree of protection	In assembled state	In assembled state

1) Corrosion resistance class CRC 1 to Festo standard FN 940070

Low corrosion stress. Dry indoor application or transport and storage protection. Also applies to parts behind coverings, in the non-visible interior area, and parts which are covered in the application (e.g. drive trunnions).

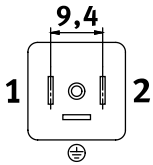


## Data sheet

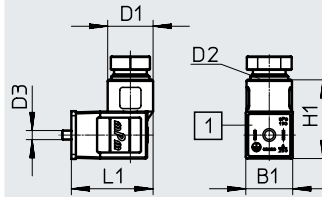
### Dimensions

Download CAD data → [www.festo.com](http://www.festo.com)

#### Pin allocation

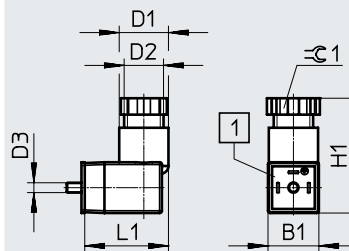


#### MSSD-E



[1] Insert can be repositioned by 90°

#### MSSD-E-M12



[1] Insert can be repositioned by 90°

Type	B1	D1 ∅	D2	D3	H1	L1	⌀ 1
MSSD-E	15.5	14	Pg7	M3	24.5	25	-
MSSD-E-M12	15.5	15	M12x 1.5	M3	33	25.5	13

### Ordering data

Description	Cable connection	Cable diameter [mm]	Weight [g]	Part no.	Type
Socket, plug pattern type C, to industry standard, 9.4 mm, 3-pin, angled	Screw terminal	6 ... 8	8	<b>14098</b>	<b>MSSD-E</b>
		4 ... 6	11	<b>539711</b>	<b>MSSD-E-M12</b>

## Data sheet

### Plug socket MSSD-ZBZC

- For valves with ZB and ZC solenoid coils



General technical data	
<b>Electrical connection 1</b>	
Connection type	Socket
Cable outlet	Angled
Design	Rectangular
Connection technology	Plug pattern ZB/ZC
Number of pins/wires	4
Type of mounting	On solenoid valve via self-tapping screw
<b>Electrical connection 2</b>	
Connection technology	Insulation displacement connector
Nominal conductor cross section [mm <sup>2</sup> ]	0.22 ... 0.34

Technical data – Electrical components		
Nominal operating voltage	[V DC]	24
Operating voltage range	[V DC]	3 ... 36

Materials	
Housing	PA
Note on materials	RoHS-compliant

Operating and environmental conditions		
Ambient temperature	[°C]	-10 ... +50
Corrosion resistance class CRC <sup>1)</sup>		1
Degree of protection		IP50
Note on degree of protection		In assembled state
Maritime classification <sup>2)</sup>		See certificate

1) Corrosion resistance class CRC 1 to Festo standard FN 940070

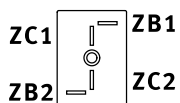
Low corrosion stress. Dry indoor application or transport and storage protection. Also applies to parts behind coverings, in the non-visible interior area, and parts which are covered in the application (e.g. drive trunnions).

2) Additional information is available at [www.festo.com/sp](http://www.festo.com/sp) → Certificates.

## Data sheet

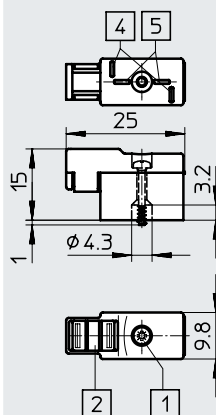
### Dimensions

Pin allocation



Download CAD data → [www.festo.com](http://www.festo.com)

MSSD-ZBZC



- [1] Retaining screw
- [2] Inscription label IBS-6x10
- [4] Plug pattern for ZB solenoid coil
- [5] Plug pattern for ZC solenoid coil

### Ordering data

Description	Cable connection	Nominal conductor cross section [mm <sup>2</sup> ]	Weight [g]	Part no.	Type
Socket, connection pattern ZB/ZC, 4-pin, angled	Insulation displacement connector	0.22 ... 0.34	11	<b>185521</b>	<b>MSSD-ZBZC</b>