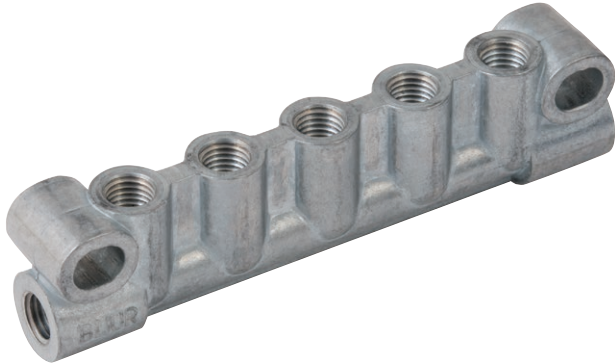





# Junction Bars



Junctions Bars	BDI PART #	TYPE	DIMENSIONS					
			OUTLETS	INLET	OUTLETS	A	B	C
 <p>M8X1</p>	20348-4	4 WAY	2	M8X1 (2)	M8X1 (2)	36mm	48mm	16mm
	20348-5	5 WAY	3	M8X1 (2)	M8X1 (3)	52mm	64mm	16mm
	20348-6	6 WAY	4	M8X1 (2)	M8X1 (4)	68mm	80mm	16mm
	20348-7	7 WAY	5	M8X1 (2)	M8X1 (5)	84mm	96mm	16mm
	20348-10	10 Way	8	M8X1 (2)	M8X1 (8)	132mm	144mm	16mm

Alum Zinc Die Cast

Single sided

2 Mounting Holes

AJB, QJM, ZJBM

### DRAWINGS

