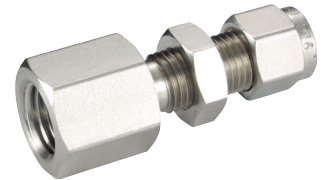
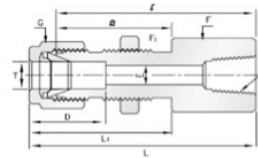


316 Stainless Steel Twin Ferrule Metric Tube Fittings



Bulkhead Female Connectors

Male Thread, NPT



PART NO	T mm	P (NPT)	E mm	F	F1	G	D	I	I1	L	L1	Panel Hole Drill Size	Max Panel Thickness
BFC-6-125N	6	1/8	4.8	15.8	15.8	14	15.3	39.6	27.7	46.90	35	11.5	10.2
BFC-6-250N	6	1/4	4.8	19.0	16.0	14	15.3	44.4	26.2	51.80	33.6	11.5	10.2
BFC-12-500N	12	1/2	9.5	27.0	24.0	22	22.8	55.4	31.8	66.50	41.9	19.5	12.7