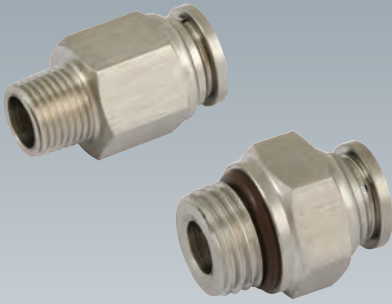
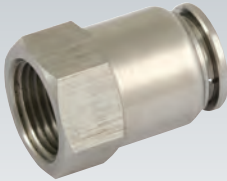


KELM™ One Touch All Stainless Steel Push-in Fittings

Male Studs



Female Studs



Male Stud Swivel Elbows



Female Stud Elbows



Speed Control Valves



Male Stud Centre Leg Tees



Product Name: One Touch All Stainless Steel

Product Range: Push-in Fittings

Features & Benefits:

- Convenient One Touch fittings provide instant connections
- Light manual pressure on the collet ring is all that is required to instantly disconnect each tube, no special tool is required
- Full stainless steel construction prevents corrosion and increases compatibility with more aggressive medias & environments

Construction:

- Body & Collet: 316 Stainless Steel
- O-ring: FKM (FDA Certified)

Application:

- Tube to Connect: PU, Nylon & PTFE
- Media: Compressed Air, Steam Water & Other Compatible Liquids

Seals:



All seals have FDA Certification

Temperature Range:

-20°C to +200°C
(dependent upon tubing specification)

Pressure:

10 bar
(dependent upon tubing specification)

Tube x Tube Connectors



Equal Straights



Equal Tees



Unequal Straights



Equal Bulkheads



Equal Elbows



Equal Ys

Stem Connectors



Plugs

