

# VACUUM FLOW CONTROLLERS

## Specification

Fluid	Air
Proof Pressure	1.5 Mpa
Maximum Operating Pressure	1.0 Mpa
Minimum Operating Pressure	0.1 Mpa
Ambient & Fluid Temperature	-5 to 60°C (No Freezing)
Number of needle turns	10 Turns (M3,M5 8 Turns)

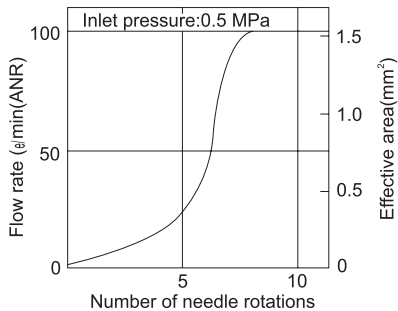


## Ordering Code

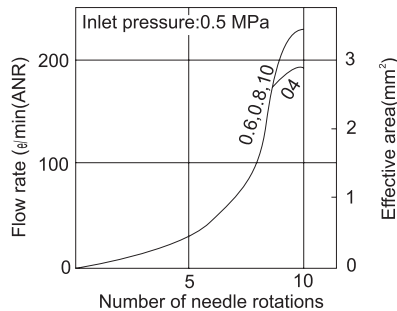
K	—	1	—	2	—	0	—	1	F	—	M	3	—	0	4
		Body Size		Style		Meter Control					Thread			O.D. mm Ø	
		1 : M3, M5		2 : Elbow		0 : Meter OUT					M3 : M3 x 0.5			04 : 04	
		2 : 1/8, 1/4		3 : Universal		1 : Meter IN					M5 : M5 x 0.8			06 : 06	
		3 : 3/8									M6 : M6 x 1.0			08 : 08	
		4 : 1/2									01 : R1/8			10 : 10	
											02 : R1/4			12 : 12	
											03 : R3/8				
											04 : R1/2				

## Flow Characteristics

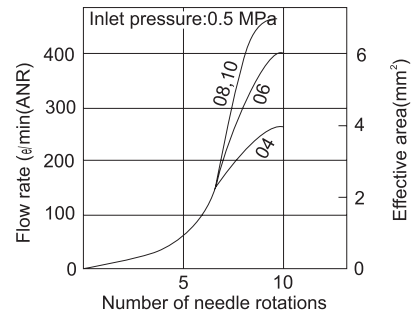
K-1201F-M3/M5, K-1211F-M3/M5,  
K-1301F-M3/M5, K-1311F-M3/M5



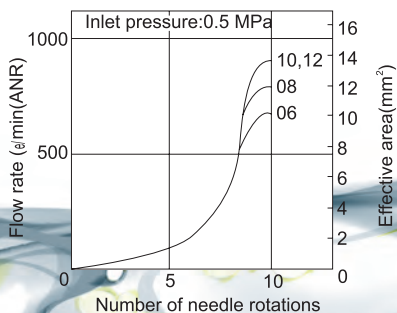
K-2201F-01, K-2211F-01,  
K-2301F-01, K-2311F-01



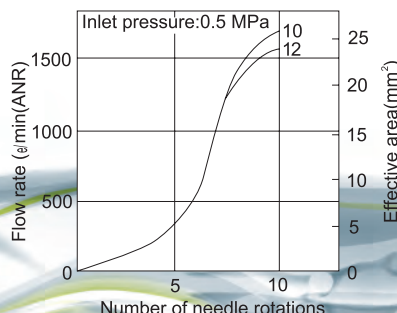
K-2201F-02, K-2211F-02,  
K-2301F-02, K-2311F-02



K-3201F-03, K-3211F-03,  
K-3301F-03, K-3311F-03



K-4201F-04, K-4211F-04,  
K-4301F-04, K-4311F-04

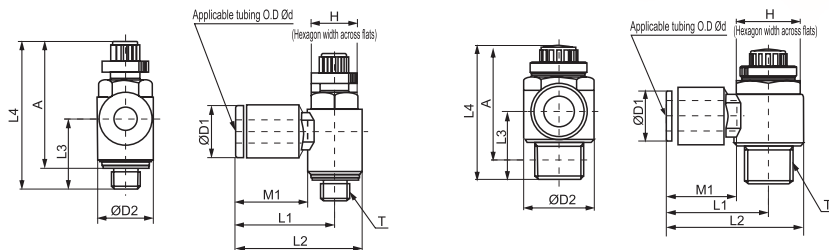


# VACUUM FLOW CONTROLLERS

## Dimensions

All sizes are in millimetres unless stated otherwise.

### Elbow



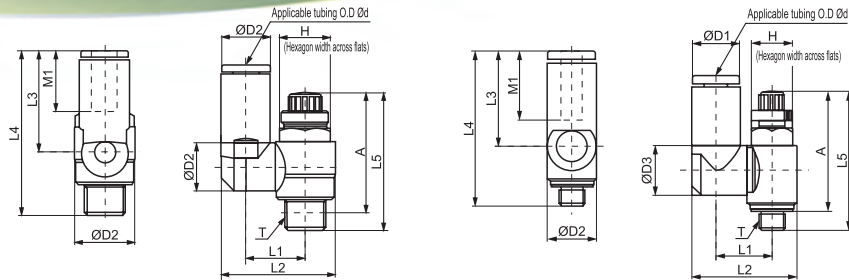
Model		O.D. mm	T	H	D1	D2	L1	L2	L3	L4		A		M1				
Meter OUT	Meter IN									Max	Min	Max	Min					
K-1201F-M3-04	K-1211F-M3-04	04	M3 x 0.5	5.5	9.3	9.6	17.3	22.1	12	26.6	24.1	24	21.5	12.7				
K-1201F-M5-04	K-1211F-M5-04	04	M5 x 0.8	8					12.3	28.6	25.8				25	22.2		
K-1201F-M5-06	K-1211F-M5-06	06	M5 x 0.8	1/8"	12 (12.7)	14.2	11.6	18.1	22.9	11.7	36.1	31.1	32.1	27.1	13.5			
K-2201F-01-04	K-2211F-01-04	04	9.3				20.4	27.5	14.3	36.1					31.1	32.1	27.1	12.7
K-2201F-01-06	K-2211F-01-06	06	11.6				20.4	27.5										13.5
K-2201F-01-08	K-2211F-01-08	08	15.2				25.3	32.4	18.5									
K-2201F-01-10	K-2211F-01-10	10	18.5	33.1	40.2	15	21											
K-2201F-02-04	K-2211F-02-04	04	1/4"	17 (17.5)	18.5	25.2	34.4	18.2	40.4	35.4	34.4	29.4	16					
K-2201F-02-06	K-2211F-02-06	06											12.8	25.2	36.4	17		
K-2201F-02-08	K-2211F-02-08	08											15.2	27.2	36.4	18.5		
K-2201F-02-10	K-2211F-02-10	10											18.5	33.9	43.2	20	21	
K-2201F-03-06	K-2211F-03-06	06	3/8"	19	23	27.8	39.3	20.9	46.5	41.5	40.2	35.2	17					
K-3201F-03-08	K-3211F-03-08	08											12.8	29.5	41	18.5		
K-3201F-03-10	K-3211F-03-10	10											15.2	31.8	43.3	21		
K-3201F-03-12	K-3211F-03-12	12											18.5	32.8	44.3	22		
K-4201F-04-10	K-4211F-04-10	10	1/2"	24 (23.8)	28.6	33.6	47.9	25.4	57.6	50.1	49.6	42.1	21					
K-4201F-04-12	K-4211F-04-12	12											20.9	34.6	48.9	22		

# VACUUM FLOW CONTROLLERS

## Dimensions

All sizes are in millimetres unless stated otherwise.

### Universal



Model		O.D. mm	T	H	D1	D2	D3	L1	L2	L3	L4	L5		A		M1	
Meter OUT	Meter IN											Max	Min	Max	Min		
K-1301F-M3-04	K-1311F-M3-04	04	M3 x 0.5	5.5	9.3	7.2	7.2	10.1	18.3	17.9	28.6	26.6	24.1	24	21.5	12.7	
K-1301F-M5-04	K-1311F-M5-04	04	M5 x 0.8	8	11.6	9.6	9.3	10.8	20.3	17.5	28.7	28.6	25.8	25	22.2	13.5	
K-1301F-M5-06	K-1311F-M5-06	06							21.4	20.6	31.8						
K-2301F-01-04	K-2311F-01-04	04	1/8"	12 (12.7)	9.3	14.2	10.9	14	24.9	17.5	31.8	36.1	31.1	32.1	27.1	12.7	
K-2301F-01-06	K-2311F-01-06	06							11.6	26.9	22.9					37.2	13.5
K-2301F-01-08	K-2311F-01-08	08							15.2	30.9	28.2					41.7	18.5
K-2301F-02-04	K-2311F-02-04	04	1/4"	17 (17.5)	10.4	18.5	10.9	16.2	30.6	21.9	40.1	40.4	35.4	34.4	29.4	16	
K-2301F-02-06	K-2311F-02-06	06			12.8	18.4	34	25.2	42.6	17							
K-2301F-02-08	K-2311F-02-08	08			15.2	18.3	35.2	28.2	45.6	18.5							
K-2301F-02-10	K-2311F-02-10	10			18.5	20.2	38.7	31	48.4	21							
	K-3311F-02-12	12			20.9	44.9	34.4	56.2	22								
K-3301F-03-06	K-3311F-03-06	06	3/8"	19	12.8	23	16.2	20.6	38.5	25.2	46.1	48.8	43.8	42.8	37.8	17	
K-3301F-03-08	K-3311F-03-08	08			15.2				39.7	28.2	49.1					18.5	
K-3301F-03-10	K-3311F-03-10	10			18.5				43.7	32.6	53.5					21	
K-3301F-03-12	K-4311F-03-12	12			20.9				44.9	34.4	55.3					22	
K-4301F-04-10	K-4311F-04-10	10	1/2"	24 (23.8)	18.5	28.6	16.2	25.8	49.4	32.6	58	57.6	50.1	49.6	42.1	21	
K-4301F-04-12	K-4311F-04-12	12			21.7				19.4	26.8	52					36.3	61.7