

# Pump TB-D Hand lever



## APPLICATION

For lubrication at friction points on presses, stamping presses, machine tools, conveyors, etc.

## PRODUCT CHARACTERISTICS

- Multi-line pump
- Hand lever actuation
- Output volume max. 0.5 cm<sup>3</sup>/stroke
- Discharge pressure max. 25 bar
- Lubricant: grease
- Surface signal grey RAL 7004



## FUNCTION

By pulling the hand lever the piston is raised and grease is forced into the inner bore of the piston.

During the upward motion of the latter the cross bore connects the inside chamber of the piston with the outlet ports one after the other. These ports are not on the same level and the ring groove of the cross port frees the way to the outlet ports alternatively.

When returning the hand lever to its original position the piston is lowered and lubricant is sucked into the required cap.

<b>A. PUMP TYPE</b>	<b>Code</b>
---------------------	-------------

TBH

<b>B. ANZAHL DER AUSLÄSSE</b>	<b>Code</b>
-------------------------------	-------------

1 outlet	01
2 outlets	02
4 outlets	04
5 outlets	05
6 outlets	06
8 outlets	08
Outlet X	10

<b>C. REVISION</b>	<b>Code</b>
--------------------	-------------

Status A	A
----------	---

<b>D. KINDS OF DRIVE</b>	<b>Code</b>
--------------------------	-------------

Hand lever	01
------------	----

<b>E. POSITION OF DRIVE</b>	<b>Code</b>
-----------------------------	-------------

without	0
---------	---

<b>F. RESERVOIR</b>	<b>Code</b>
---------------------	-------------

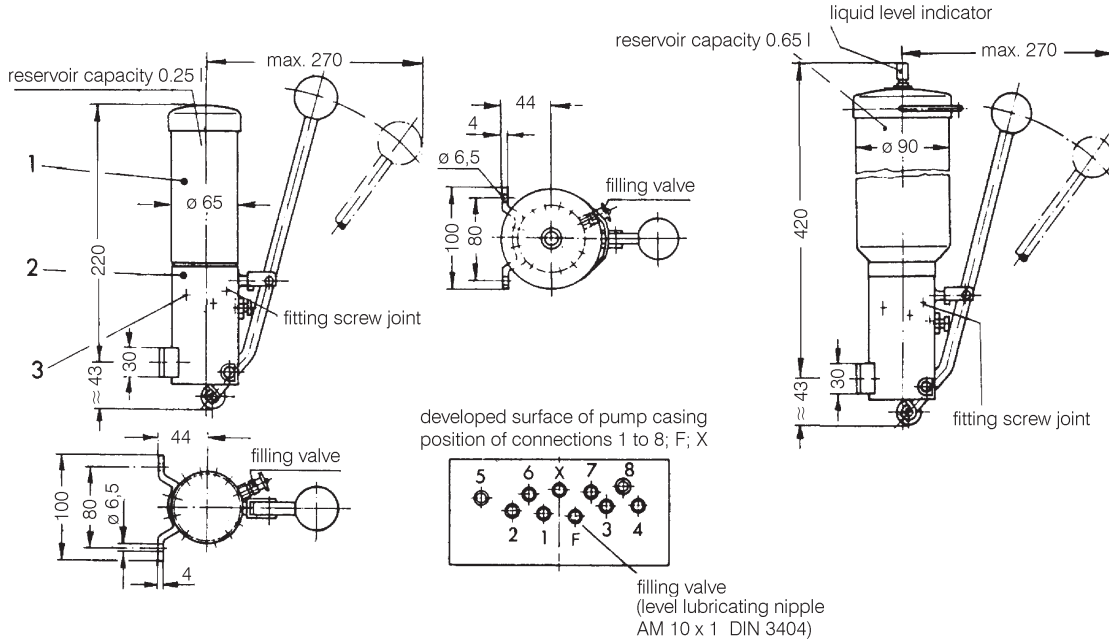
0.25 liters grease	A
0.65 liters grease	B

<b>G. ACCESSORIES</b>	<b>Code</b>
-----------------------	-------------

without	00
---------	----

## SPECIFICATION

Discharge pressure : \_\_\_\_\_ max. 25 bar  
 Number of outlets : \_\_\_\_\_ at choice 1, 2, 4, 5, 6 or 8  
 Operating force at 25 bar : \_\_\_\_\_ 200 N (20 kp)  
 Output volume per stroke : \_\_\_\_\_ outlet 1, 2, 4, 5, 6 or 8 each 0.5 cm<sup>3</sup>  
 Reservoir capacity : \_\_\_\_\_ 0.25 l or 0.65 liters  
 Lubricants :  
     Grease \_\_\_\_\_ up to NLGI class 2, DIN 51818  
 Service temperature : \_\_\_\_\_ - 20 °C up to + 80 °C



## EXAMPLE OF ORDER

Code											
T	B	H	0	1	A	0	1	O	A	0	0

<b>Pump type TB-D</b>	Code: TBH	
<b>Number of outlets</b> 1 outlet	Code: 01	
<b>Revision</b> Status A	Code: A	
<b>Kinds of drive</b> Hand lever	Code: 01	
<b>Position of drive</b> without	Code: O	
<b>Reservoir</b> 0.25 liters grease	Code: A	
<b>Accessories</b> without	Code: 00	