

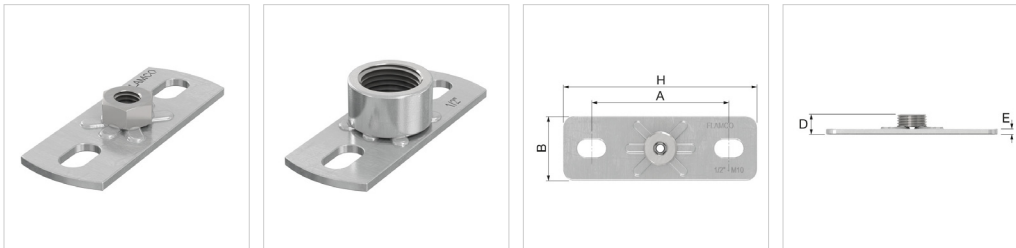
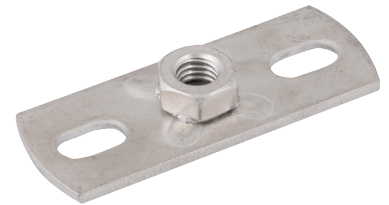
# Wall or Ceiling Mounted Pipe Clips



## Product Data Sheet (2017-10-13)

### GP Backplates 80 x 30

For a rigid wall or ceiling fastening of a clip by means of a threaded rod/pipe.



Type	Connection	Dimensions						###	Order Code
		A [mm]	B [mm]	H [mm]	D [mm]	E [mm]	Slotted hole [mm]		
SR2-L - R $\frac{3}{8}$ "	R $\frac{3}{8}$ "	54	30	80	15	3	9 x 16	50	39440
GP 8 / 10 - 80 x 30	M 8 / 10	54	30	80	18	3	9 x 16	50	39410
GP 8 - 80 x 30 *	M 8	54	30	80	11	3	9 x 16	50	39417
GP 10 - 80 x 30 *	M 10	54	30	80	13	3	9 x 16	50	39413
GP 12 - 80 x 30	M 12	54	30	80	15	3	9 x 16	50	39415
GP $\frac{1}{2}$ " - 80 x 30 *	$\frac{1}{2}$ " F	54	30	80	18	3	9 x 16	50	39418
GP $\frac{1}{2}$ " / M 10 - 80 x 30 *	$\frac{1}{2}$ " M / M 10 F	54	30	80	11	3	9 x 16	50	39409

\*Also available in stainless steel (Inox V 4 A, 1.4435).

### Advantages

- Slotted holes for fixing.
- Can also be used in fixed point constructions, in combination with KB clips or BVP bracket, fixed point.

### Technical information

- Electrolytically zinc plated.