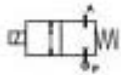


2/2 WAY DIRECT ACTING SOLENOID VALVE, G 1/8" - G 1/4"



normally closed

TYPE: D298/299

TECHNICAL SPECIFICATIONS

Media:	water, oil, air, aggressive fluids
Media temperature:	-10°C + +130°C
Ambient temperature:	-10°C + +50°C
Body material:	stainless steel (AISI 303 EN 10088-3)
Orifice material:	stainless steel (AISI 303 EN 10088-3)
Operator material:	stainless steel
Seal material:	FKM
Coil power:	AC 18VA (holding) AC 36VA (inrush) DC 14W
Protection class:	IP65 (with connector)

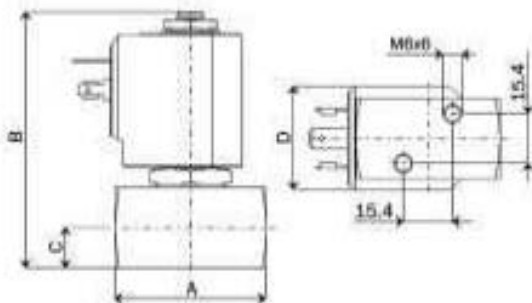
OPTIONS

Normally open (Ex code <u>RD298DVG</u>) with coils class "H" only
Silencing ring (Ex code <u>D298DVCΔ</u>)
EPDM seal for air and hot water MAX 120°C (Ex code <u>D299DEG</u>)



SELECTION TABLE	VALVE	G connection [ISO 228]	Nominal Diameter [mm]	Flow rate [l/min]	OPD			COILS	
					min [bar]	max AC [bar]	max DC [bar]	Code	[Volts/Hz]
	Code								
	D298DVC	1/8"	1.5	1.3	0	24	24	7250	24V DC
	D298DVG	1/8"	2.5	3.4	0	18	16	7200	24V 50/60Hz
	D298DVH	1/8"	3.0	4.5	0	15	8	7400	110V 50Hz - 120V 60Hz
	D299DVC	1/4"	1.5	1.3	0	24	24	7600	200V 50Hz - 220V 60Hz
	D299DVG	1/4"	2.5	3.4	0	18	16	7700	230V 50Hz - 240V 60Hz
	D299DVH	1/4"	3.0	4.5	0	15	8		
	D299DVL*	1/4"	4.0	6.0	0	8	5		
	D299DVN*	1/4"	5.0	7.5	0	5	2		

* NO version not available



DIMENSIONS & WEIGHTS	G connection	A	B	C	D	weight
	[ISO 228]	[mm]	[mm]	[mm]	[mm]	[Kg]
	1/8"	44	78.5	12.5	32	0.36
1/4"	44	78.5	12.5	32	0.36	