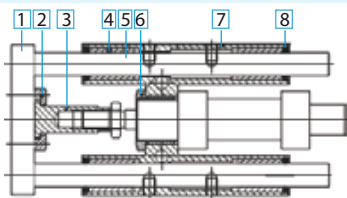


# Guide Units "H" Type

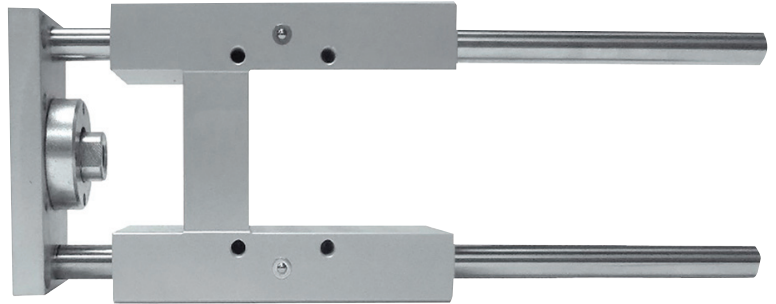


## ISO15552 Standard Cylinder Guides

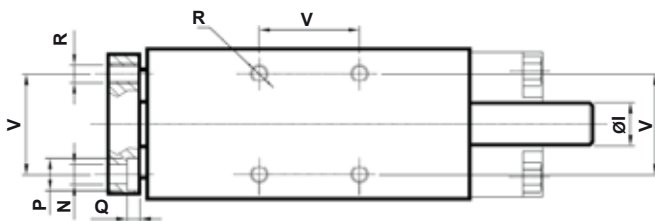
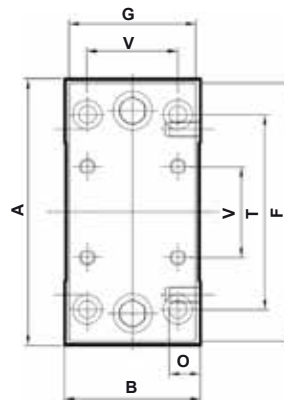
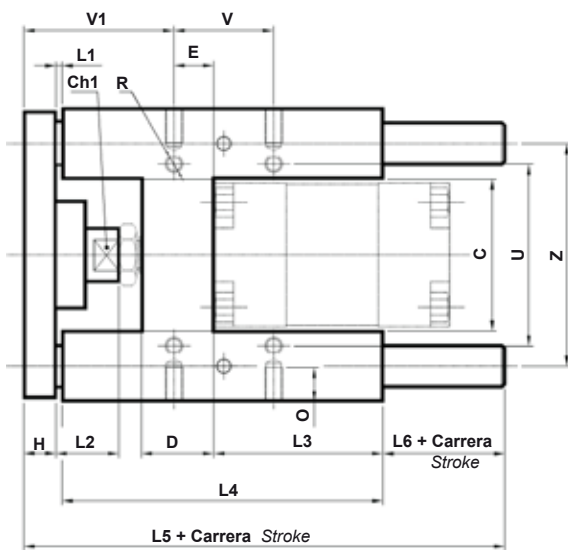
### Materials Sectional View



- 1 Aluminio / Aluminium
- 2 Acero / Steel
- 3 Acero / Steel
- 4 Rodamiento bolas: Acero / Ball bearing: Steel  
Casquillo bronce: Bronce / Slide bushing: Bronze
- 5 Acero cromado / Chromed steel
- 6 Acero / Steel
- 7 Aluminio / Aluminium
- 8 NBR



### Dimensions



Contera Larga  
Long Coupling

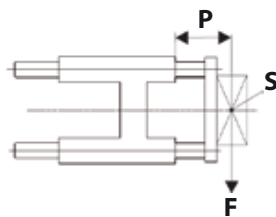
Ø	L1	L2	L6	V1
32	26	42	24	83,7
40	25	42	30	86
50	25	50	35	91,2
63	25	50	25	96,7
80	25	50	27	104
100	25	50	27	105

Contera Corta  
Short Coupling

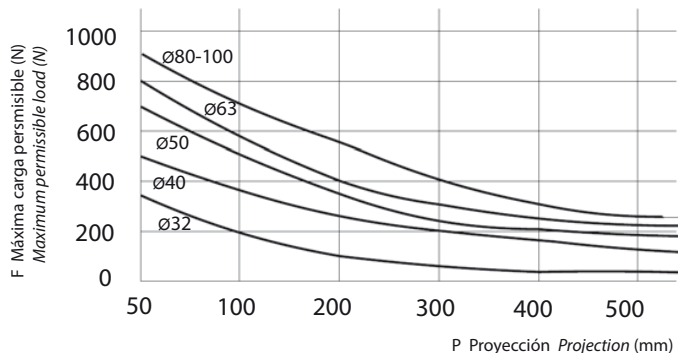
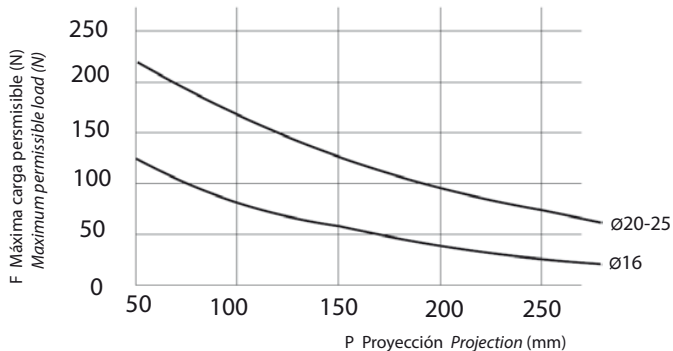
Ø	A	B	C	Ch	D	E	F	G	H	Ø1	L1	L2	L3	L4	L5	L6	N	O	P	Q	R	T	U	V	V1	Z
32	97	49	51	15	24	4,3	93	45	12	12	3	19	75	125	187	47	6,6	12	11	6,5	M6	78	61	32,5	60,7	74
40	115	58	58,2	15	28	11	112	55	12	16	3	24	80	140	207	52	6,6	12	11	6,5	M6	84	69	38	64	87
50	137	70	70,2	20	34	18,8	134	65	15	20	3	27	78	148	223	57	9	16	15	8,5	M8	100	85	46,5	69,2	104
63	152	85	85,2	20	34	15,3	147	80	15	20	3	27	106	178	243	47	9	16	15	9	M8	105	100	56,5	74,7	119
80	189	105	105,5	26	50	25	180	100	20	25	3	27	111	195	267	49	11	20	18	11	M10	130	130	72	82	148
100	213	130	130,5	26	55	30	206	120	20	25	3	27	128	218	290	49	11	20	18	11	M10	150	150	89	83	173

# Guide Units "H" Type

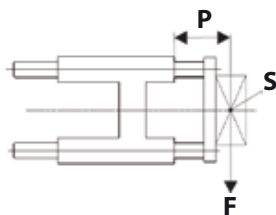
With slide bearings



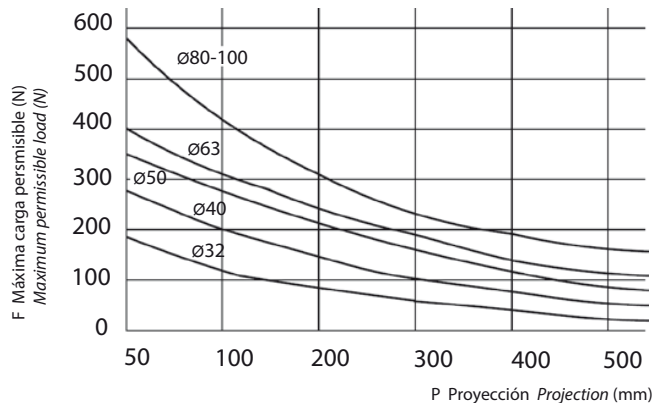
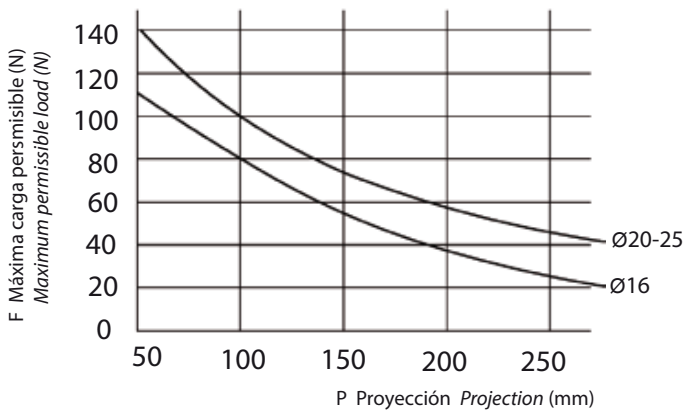
- P -> Proyección  
Projection
- S -> Centro de gravedad de la carga útil  
Centre of gravity of working load
- F -> Carga permisible  
Permissible load



With ball bearing



- P -> Proyección  
Projection
- S -> Centro de gravedad de la carga útil  
Centre of gravity of working load
- F -> Carga permisible  
Permissible load



Weight

Ø	12-16	20-25	32	40	50	63	80	100
Peso en Kg. (Carrera 0) Weight in Kg (Stroke 0)	0,4	0,9	1,3	2,4	3,5	4,6	8,4	11,8
Incremento cada 100mm (Kg) Increase every 100mm (Kg)	0,12	0,18	0,18	0,32	0,5	0,5	0,77	0,77