

# PILOT, LOGIC & SPECIALIST VALVES

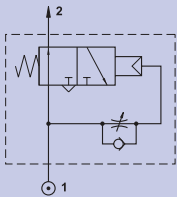
## SPECIALIST VALVES



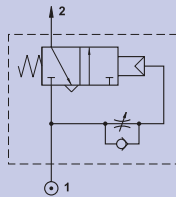
### Specification

Model	KP100014	KP100094	KP010444	KP010464	KP100354	KP000744	KP2005
Fluid	Air (to be filtered by 50µm filter element)						
Port	G1/8"		G1/4"			G1/8"	M5
Working Pressure	0.2 - 1MPa (30 - 145psi)				0.3 - 1MPa (45 - 145psi)	0.2 - 1MPa (30 - 145psi)	0.3 - 0.8MPa (45 - 116psi)
Actuating Pressure	-	-	0.3 - 1MPa (45 - 145psi)	0.2 - 1MPa (30 - 145psi)	0.3 - 1MPa (45 - 145psi)	-	-
Temperature	0°C to +60°C						
Material of Body	Aluminium						
Material of Spring	Stainless Steel						
Material of Seals	NBR						
Material of Internal Components	Brass						
Material of Spool	-	-	Nickel Plated Aluminium				-
Time Regulating range	0 - 15 sec				-	0 to 15 sec	-

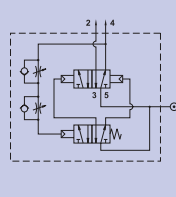
### Symbols



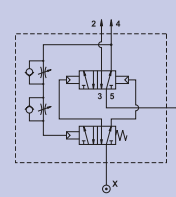
Impulse Valve, NO



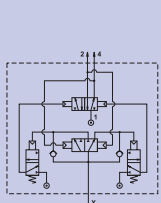
Impulse Valve, NC



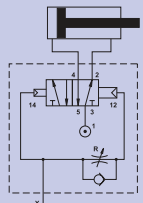
Oscillating Valve,  
Continuing Cycle



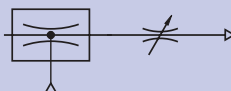
Oscillating Valve,  
Pneumatically Piloted



Flip Flop Valve,  
Pneumatically Piloted



High Flow Pneumatic Timer  
for Automatic Return



Vacuum Driven  
Liquid Sprayer

# PILOT, LOGIC & SPECIALIST VALVES

## SPECIALIST VALVES

### Dimensions

### High Flow Pneumatic Timer for Automatic Return

Model:

- **KP000744**

### Valve Operation

A high-flow 5 way valve with a pneumatic timer which allows the automatic return of the valve after the pre-set time. The time is adjusted by R. When a signal is applied to X the valve will stay operated until the time which was set at R has elapsed, and then the valve will automatically re-set. To repeat the cycle the signal must be exhausted and then re-applied. If a momentary signal is applied the valve will operate as a conventional 5 way mono-stable valve without the time delay function. The valve will only operate when a pressure signal is applied to X.

