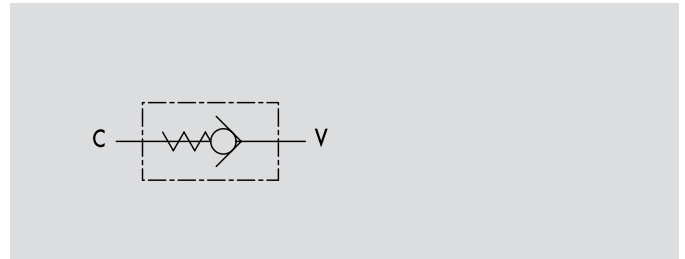


# Male/Male Check Valves

TIPO / TYPE  
**VU MM**

SCHEMA IDRAULICO  
HYDRAULIC DIAGRAM



## MALE/MALE CHECK VALVES

### USE AND OPERATION:

In the check valves flow is free in one direction and blocked in the reverse one.

### MATERIALS AND FEATURES:

Body: zinc-plated steel  
Internal parts: hardened and ground steel  
Poppet type: any leakage.

### APPLICATIONS:

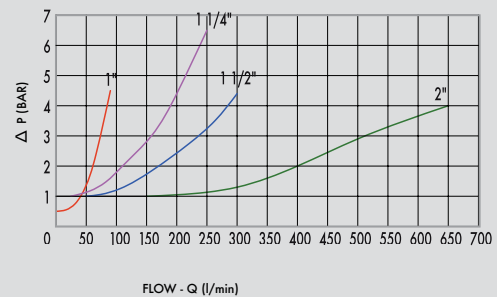
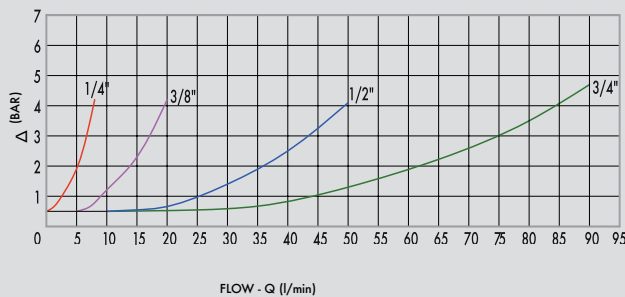
Connect V to the pressure flow and C to the actuator. Flow is free from V to C and blocked in the reverse direction.

### ON REQUEST

- Different cracking pressures: 1-3-6-9 bar (please specify the desired cracking pressure in the product description). Set valve is used to keep a hydraulic system under pressure.

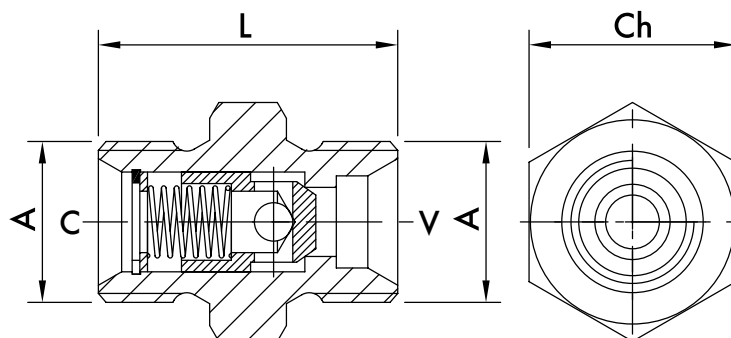
PRESSURE DROPS CURVE

Oil temperature: 50° C - Oil viscosity: 30 cSt



CODICE CODE	SIGLA TYPE	PORTATA MAX MAX FLOW Lt. / min	PRESSIONE MAX MAX PRESSURE Bar
<b>MVC04</b>	VU MM 1/4"	8	350
<b>MVC06</b>	VU MM 3/8"	20	350
<b>MVC08</b>	VU MM 1/2"	50	350
<b>MVC12</b>	VU MM 3/4"	90	350
<b>MVC16</b>	VU MM 1"	90	320
<b>MVC20</b>	VU MM 1" 1/4	250	320
<b>MVC24</b>	VU MM 1" 1/2	300	320
<b>MVC32</b>	VU MM 2	650	320

\*Specificare il valore della molla desiderato: pressione di apertura 1 (standard) -3 -6 Bar per le misure fino a 1" e 1 (standard) - 6 -9 Bar da 1" 1/4.  
 \*Please specify the desired spring: cracking pressure 1 (standard) -3 -6 Bar up to 1" size and 1 (standard) - 6 - 9 Bar from 1" 1/4 size.



#### MOLLE - SPRINGS

codice code	1 Bar	3 Bar	6 Bar	9 Bar
VU MM 1/4"	V0594/1	V0594/3	V0594/6	/
VU MM 3/8"	V0604/1	V0604/3	V0594/6	/
VU MM 1/2"	V0614/1	V0614/3	V0614/6	/
VU MM 3/4"	V0624/1	V0624/3	V0624/6	/
VU MM 1"	V0634/1	/	V0634/6	V0634/9
VU MM 1" 1/4	V0637/1	/	V0637/6	V0637/9
VU MM 1" 1/2	V0638/1	/	V0638/6	V0638/9
VU MM 2"	V0639/1	/	V0639/6	V0639/9

CODICE CODE	SIGLA TYPE	A mm	L mm	Ch mm	PESO WEIGHT kg
<b>MVC04</b>	VU MM 1/4"	1/4"	32	19	0,033
<b>MVC06</b>	VU MM 3/8"	3/8"	34	22	0,053
<b>MVC08</b>	VU MM 1/2"	1/2"	39	27	0,092
<b>MVC12</b>	VU MM 3/4"	3/4"	45	32	0,142
<b>MVC16</b>	VU MM 1"	1"	55	40	0,288
<b>MVC20</b>	VU MM 1" 1/4	1" 1/4	70	50	0,594
<b>MVC24</b>	VU MM 1" 1/2	1" 1/2	86	55	0,910
<b>MVC32</b>	VU MM 2	2"	102	70	1,800