

# Layflat Hose



## PU Multipurpose Layflat Hose

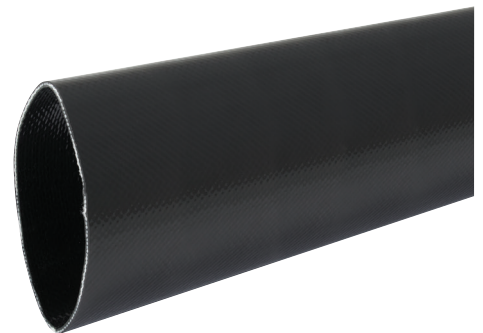
### Applications

- Construction sites, waste water industry
- Agriculture and mining
- Transport of abrasive materials
- Flexible pipeline even in extreme terrain
- Irrigation and sludge disposal
- For heavy duty service under toughest conditions

### Features

- Superior abrasion resistance
- Extremely hardwearing and durable for long service life
- Resistance to oil, fuel and a wide range of chemicals (see resistance table in technical appendix)
- resistance to weathering and ozone
- Flexible and lightweight compared to mandril built hoses, good handling
- Excellent cold flexibility

**The new generation of extruded layflat hoses sets new standards in performance and durability!**



Part Number	Bore Size		Weight		Wall Thickness mm		Working Pressure		Bursting Pressure Bar		Breaking Strength	
	mm	inch	gr/m	lbs/ft	mm	inch	Bar	PSI	Bar	PSI	kg	lbs
PUMPH2-100	52	2"	500	0.34	2.6	0.10	20	300	60	900	5,000	11,000
PUMPH3-100	76	3"	750	0.50	2.8	0.11	16	250	50	750	8,000	17,600
PUMPH4-100	102	4"	1,150	0.77	3.0	0.12	14	200	42	600	10,000	22,000
PUMPH5-100	127	5"	1,400	0.94	3.0	0.12	10	150	30	450	12,000	26,000
PUMPH6-100	154	6"	1,650	1.11	3.0	0.12	10	150	30	450	15,000	33,000
PUMPH10-100	254	10"	2,850	1.92	3.2	0.13	7	100	21	300	23,500	51,800
PUMPH12-100	305	12"	3,500	2.35	3.3	0.13	5	70	15	210	38,000	83,700

Standard length: 100 / 200 m (330 / 660 ft), other lengths on request

Standard colour: black

Service temperature: -50°C up to +75°C (-58°F up to 167°F), based on water

Tolerances can be found in the technical appendix

Change in technical specification without prior notice 10 Bar = 1 MPa

\* technical data based on water. For air pressure the minimum safety ratio is 1:4. Depending on the application our product can be operated with a maximum working pressure up to 50 % of the bursting pressure. Consult factory for approval!

It is important to note, that the technical data for pressure are only valid for hose and not for hose assembly with couplings!

\*\* to obtain maximum lifetime the end pull under working conditions should not exceed 1/3 of the breaking strength

## Construction

### Textile reinforcement:

- High tenacity polyester yarn, circular woven
- Special weaving design for continuous high pressure performance, high tensile strength and low elongation under pressure
- Totally embedded in the PU compound, excellent protected against mechanical damage

### Lining and cover:

- Thermoplastic polyether polyurethane extruded "through the weave" in a unique one step production process
- Superior abrasion resistance 4-5 times better than NBR/PVC hoses
- Inside: very smooth for minimum friction loss
- Outside: very smooth for good flexibility

### Special Options

- Single lengths longer than 200 m (660 ft)
- 52 - 90 mm (2 - 3 1/2") up to 500 m (1,650 ft)
- 102 - 127 mm (4 - 5") up to 400 m (1,320 ft)
- Other dimensions

Note that special options are subject to a higher price and a minimum order of 2,000m (6,600ft) per dimension. Production short lengths and overproduction up to 10 % of the total order quantity have to be accepted. Enquire for details!